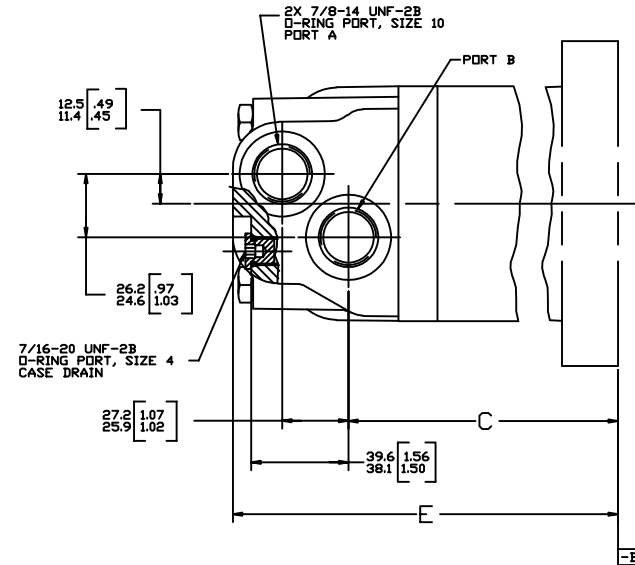
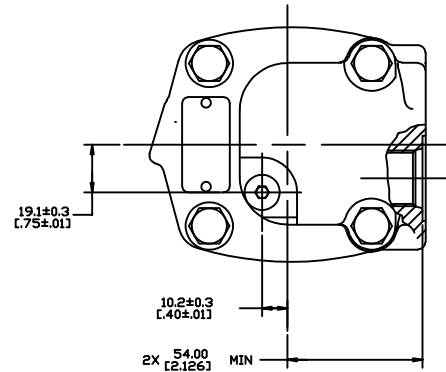


8			7			6			5			4			3			2			1		
MOUNTING TYPE AB,AM,AP,AR,AV,BB,BF,BG,BH			MOUNTING TYPE AC,AF,AH,AN,AS,AV,AU,AY,BA,BE,BD			MOUNTING TYPE AD,AE,BJ																	
DISP	C	E MAX	DISP	C	E MAX	DISP	C	E MAX	DISP	C	E MAX	DISP	C	E MAX	DISP	C	E MAX	DISP	C	E MAX	DISP	C	E MAX
049	96.0-97.5 [3.78-3.84]	144.0 [5.67]	049	136.1-137.7 [5.36-5.42]	184.2 [7.25]	049	77.7-80.0 [3.06-3.15]	126.5 [4.98]	049	77.7-80.0 [3.06-3.15]	126.5 [4.98]	049	77.7-80.0 [3.06-3.15]	126.5 [4.98]	049	77.7-80.0 [3.06-3.15]	126.5 [4.98]	049	77.7-80.0 [3.06-3.15]	126.5 [4.98]	049	77.7-80.0 [3.06-3.15]	126.5 [4.98]
055	98.3-99.8 [3.87-3.93]	146.3 [5.76]	055	138.5-140.0 [5.45-5.51]	186.5 [7.34]	055	80.0-82.3 [3.15-3.24]	128.8 [5.07]	055	80.0-82.3 [3.15-3.24]	128.8 [5.07]	055	80.0-82.3 [3.15-3.24]	128.8 [5.07]	055	80.0-82.3 [3.15-3.24]	128.8 [5.07]	055	80.0-82.3 [3.15-3.24]	128.8 [5.07]	055	80.0-82.3 [3.15-3.24]	128.8 [5.07]
062	100.6-102.4 [3.96-4.03]	148.8 [5.86]	062	140.7-142.5 [5.54-5.61]	189.0 [7.44]	062	82.3-84.8 [3.24-3.34]	131.3 [5.17]	062	82.3-84.8 [3.24-3.34]	131.3 [5.17]	062	82.3-84.8 [3.24-3.34]	131.3 [5.17]	062	82.3-84.8 [3.24-3.34]	131.3 [5.17]	062	82.3-84.8 [3.24-3.34]	131.3 [5.17]	062	82.3-84.8 [3.24-3.34]	131.3 [5.17]
080	107.2-108.7 [4.22-4.28]	155.2 [6.11]	080	147.3-148.8 [5.80-5.86]	195.3 [7.69]	080	88.9-91.2 [3.50-3.59]	137.7 [5.42]	080	88.9-91.2 [3.50-3.59]	137.7 [5.42]	080	88.9-91.2 [3.50-3.59]	137.7 [5.42]	080	88.9-91.2 [3.50-3.59]	137.7 [5.42]	080	88.9-91.2 [3.50-3.59]	137.7 [5.42]	080	88.9-91.2 [3.50-3.59]	137.7 [5.42]
096	107.2-108.7 [4.22-4.28]	155.2 [6.11]	096	147.3-148.8 [5.80-5.86]	195.3 [7.69]	096	88.9-91.2 [3.50-3.59]	137.7 [5.42]	096	88.9-91.2 [3.50-3.59]	137.7 [5.42]	096	88.9-91.2 [3.50-3.59]	137.7 [5.42]	096	88.9-91.2 [3.50-3.59]	137.7 [5.42]	096	88.9-91.2 [3.50-3.59]	137.7 [5.42]	096	88.9-91.2 [3.50-3.59]	137.7 [5.42]
119	114.0-115.3 [4.48-4.54]	161.8 [6.37]	119	154.2-155.4 [6.06-6.12]	201.9 [7.95]	119	95.5-97.8 [3.76-3.85]	144.3 [5.68]	119	95.5-97.8 [3.76-3.85]	144.3 [5.68]	119	95.5-97.8 [3.76-3.85]	144.3 [5.68]	119	95.5-97.8 [3.76-3.85]	144.3 [5.68]	119	95.5-97.8 [3.76-3.85]	144.3 [5.68]	119	95.5-97.8 [3.76-3.85]	144.3 [5.68]
149	122.9-124.5 [4.84-4.90]	171.0 [6.73]	149	163.1-164.6 [6.42-6.48]	211.1 [8.31]	149	104.6-106.9 [4.12-4.21]	153.4 [6.04]	149	104.6-106.9 [4.12-4.21]	153.4 [6.04]	149	104.6-106.9 [4.12-4.21]	153.4 [6.04]	149	104.6-106.9 [4.12-4.21]	153.4 [6.04]	149	104.6-106.9 [4.12-4.21]	153.4 [6.04]	149	104.6-106.9 [4.12-4.21]	153.4 [6.04]
187	134.4-135.6 [5.29-5.34]	182.1 [7.17]	187	174.5-175.8 [6.87-6.92]	222.2 [8.75]	187	116.1-118.1 [4.57-4.65]	164.6 [6.48]	187	116.1-118.1 [4.57-4.65]	164.6 [6.48]	187	116.1-118.1 [4.57-4.65]	164.6 [6.48]	187	116.1-118.1 [4.57-4.65]	164.6 [6.48]	187	116.1-118.1 [4.57-4.65]	164.6 [6.48]	187	116.1-118.1 [4.57-4.65]	164.6 [6.48]
240	150.1-151.9 [5.91-5.98]	198.4 [7.81]	240	190.2-192.0 [7.49-7.56]	238.5 [9.39]	240	131.8-134.4 [5.19-5.29]	180.8 [7.12]	240	131.8-134.4 [5.19-5.29]	180.8 [7.12]	240	131.8-134.4 [5.19-5.29]	180.8 [7.12]	240	131.8-134.4 [5.19-5.29]	180.8 [7.12]	240	131.8-134.4 [5.19-5.29]	180.8 [7.12]	240	131.8-134.4 [5.19-5.29]	180.8 [7.12]
298	167.6-169.2 [6.60-6.66]	215.7 [8.49]	298	207.8-209.3 [8.18-8.24]	255.8 [10.07]	298	149.4-151.6 [5.88-5.97]	198.1 [7.80]	298	149.4-151.6 [5.88-5.97]	198.1 [7.80]	298	149.4-151.6 [5.88-5.97]	198.1 [7.80]	298	149.4-151.6 [5.88-5.97]	198.1 [7.80]	298	149.4-151.6 [5.88-5.97]	198.1 [7.80]	298	149.4-151.6 [5.88-5.97]	198.1 [7.80]

REV	DESCRIPTION	BY	CHK	DATE	ECN
A	ENGINEERING RELEASE	RAF		5-4-99	M21630
B	1>REVISED MOUNTING TAB CODES 2>NOTE 1 WAS PORT OPTION 5 - 2>ADDED NOTE 2	AGJ		5-19-02	41044
C	REVISED MOUNTING TYPE "AG" VALUES	MGF		7-28-08	41686
D	REVISED TABULATION BLOCKS	AGJ		5-17-04	47918
E	REVISED DISPLACEMENT FOR TABULATION BLOCKS	RG		6-26-06	56090
F	ADDED DISPLACEMENT 040 FOR MOUNTING TYPE AJ	MNP		4-17-07	M104133

MOUNTING TYPE AG			MOUNTING TYPE AJ & BC		
DISP	C	E MAX	DISP	C	E MAX
049	124.2-125.7 [4.89-4.95]	172.2 [6.78]	040	137.4-138.4 [5.41-5.45]	195.1 [7.29]
055	126.5-128.0 [4.98-5.04]	174.5 [6.87]	049	139.7-141.7 [5.50-5.58]	188.2 [7.41]
062	128.8-130.6 [5.07-5.14]	177.0 [6.97]	055	142.0-144.0 [5.59-5.67]	190.5 [7.50]
080	135.4-136.9 [5.33-5.39]	183.4 [7.22]	062	144.3-146.6 [5.68-5.77]	193.0 [7.60]
096	135.4-136.9 [5.33-5.39]	183.4 [7.22]	080	150.9-152.9 [5.94-6.02]	199.4 [7.85]
119	142.0-143.5 [5.59-5.65]	190.0 [7.48]	096	150.9-152.9 [5.94-6.02]	199.4 [7.85]
149	151.1-152.6 [5.95-6.01]	199.1 [7.84]	119	157.5-159.5 [6.20-6.28]	206.0 [8.11]
187	162.6-163.8 [6.40-6.45]	210.3 [8.28]	149	166.6-168.7 [6.56-6.64]	215.1 [8.47]
240	178.3-180.1 [7.02-7.09]	226.6 [8.92]	187	178.1-179.8 [7.01-7.08]	226.3 [8.91]
298	195.8-197.4 [7.71-7.77]	243.8 [9.60]	240	193.8-196.1 [7.63-7.72]	242.6 [9.55]
			298	211.3-213.4 [8.32-8.40]	259.8 [10.23]



NOTE
 1 PORT OPTION: AA
 2 CASE FLOW OPTION: 08

G K S

UNLESS OTHERWISE SPECIFIED, ALL DIMENSIONS ARE IN INCHES		DRAWING BASED ON ANSI Y14.5M-1982	
TOLERANCES	± .0005	DATE	5-10-99
SIZE	1/4"	BY	RAF
UNSPECIFIED DRAFT ANGLES ARE	30°	DATE	5-10-99
UNSPECIFIED DRAFT ANGLES ARE	30°	BY	AGJ
UNSPECIFIED DRAFT ANGLES ARE	30°	DATE	5-10-99
UNSPECIFIED DRAFT ANGLES ARE	30°	BY	TRF
UNSPECIFIED DRAFT ANGLES ARE	30°	DATE	5-10-99
UNSPECIFIED DRAFT ANGLES ARE	30°	BY	AGJ
UNSPECIFIED DRAFT ANGLES ARE	30°	DATE	5-10-99
UNSPECIFIED DRAFT ANGLES ARE	30°	BY	TRF
UNSPECIFIED DRAFT ANGLES ARE	30°	DATE	5-10-99
UNSPECIFIED DRAFT ANGLES ARE	30°	BY	AGJ
UNSPECIFIED DRAFT ANGLES ARE	30°	DATE	5-10-99
UNSPECIFIED DRAFT ANGLES ARE	30°	BY	TRF
UNSPECIFIED DRAFT ANGLES ARE	30°	DATE	5-10-99
UNSPECIFIED DRAFT ANGLES ARE	30°	BY	AGJ
UNSPECIFIED DRAFT ANGLES ARE	30°	DATE	5-10-99
UNSPECIFIED DRAFT ANGLES ARE	30°	BY	TRF
UNSPECIFIED DRAFT ANGLES ARE	30°	DATE	5-10-99
UNSPECIFIED DRAFT ANGLES ARE	30°	BY	AGJ
UNSPECIFIED DRAFT ANGLES ARE	30°	DATE	5-10-99
UNSPECIFIED DRAFT ANGLES ARE	30°	BY	TRF
UNSPECIFIED DRAFT ANGLES ARE	30°	DATE	5-10-99
UNSPECIFIED DRAFT ANGLES ARE	30°	BY	AGJ
UNSPECIFIED DRAFT ANGLES ARE	30°	DATE	5-10-99
UNSPECIFIED DRAFT ANGLES ARE	30°	BY	TRF
UNSPECIFIED DRAFT ANGLES ARE	30°	DATE	5-10-99
UNSPECIFIED DRAFT ANGLES ARE	30°	BY	AGJ
UNSPECIFIED DRAFT ANGLES ARE	30°	DATE	5-10-99
UNSPECIFIED DRAFT ANGLES ARE	30°	BY	TRF
UNSPECIFIED DRAFT ANGLES ARE	30°	DATE	5-10-99
UNSPECIFIED DRAFT ANGLES ARE	30°	BY	AGJ
UNSPECIFIED DRAFT ANGLES ARE	30°	DATE	5-10-99
UNSPECIFIED DRAFT ANGLES ARE	30°	BY	TRF
UNSPECIFIED DRAFT ANGLES ARE	30°	DATE	5-10-99
UNSPECIFIED DRAFT ANGLES ARE	30°	BY	AGJ
UNSPECIFIED DRAFT ANGLES ARE	30°	DATE	5-10-99
UNSPECIFIED DRAFT ANGLES ARE	30°	BY	TRF
UNSPECIFIED DRAFT ANGLES ARE	30°	DATE	5-10-99
UNSPECIFIED DRAFT ANGLES ARE	30°	BY	AGJ
UNSPECIFIED DRAFT ANGLES ARE	30°	DATE	5-10-99
UNSPECIFIED DRAFT ANGLES ARE	30°	BY	TRF
UNSPECIFIED DRAFT ANGLES ARE	30°	DATE	5-10-99
UNSPECIFIED DRAFT ANGLES ARE	30°	BY	AGJ
UNSPECIFIED DRAFT ANGLES ARE	30°	DATE	5-10-99
UNSPECIFIED DRAFT ANGLES ARE	30°	BY	TRF
UNSPECIFIED DRAFT ANGLES ARE	30°	DATE	5-10-99
UNSPECIFIED DRAFT ANGLES ARE	30°	BY	AGJ
UNSPECIFIED DRAFT ANGLES ARE	30°	DATE	5-10-99
UNSPECIFIED DRAFT ANGLES ARE	30°	BY	TRF
UNSPECIFIED DRAFT ANGLES ARE	30°	DATE	5-10-99
UNSPECIFIED DRAFT ANGLES ARE	30°	BY	AGJ
UNSPECIFIED DRAFT ANGLES ARE	30°	DATE	5-10-99
UNSPECIFIED DRAFT ANGLES ARE	30°	BY	TRF
UNSPECIFIED DRAFT ANGLES ARE	30°	DATE	5-10-99
UNSPECIFIED DRAFT ANGLES ARE	30°	BY	AGJ
UNSPECIFIED DRAFT ANGLES ARE	30°	DATE	5-10-99
UNSPECIFIED DRAFT ANGLES ARE	30°	BY	TRF
UNSPECIFIED DRAFT ANGLES ARE	30°	DATE	5-10-99
UNSPECIFIED DRAFT ANGLES ARE	30°	BY	AGJ
UNSPECIFIED DRAFT ANGLES ARE	30°	DATE	5-10-99
UNSPECIFIED DRAFT ANGLES ARE	30°	BY	TRF
UNSPECIFIED DRAFT ANGLES ARE	30°	DATE	5-10-99
UNSPECIFIED DRAFT ANGLES ARE	30°	BY	AGJ
UNSPECIFIED DRAFT ANGLES ARE	30°	DATE	5-10-99
UNSPECIFIED DRAFT ANGLES ARE	30°	BY	TRF
UNSPECIFIED DRAFT ANGLES ARE	30°	DATE	5-10-99
UNSPECIFIED DRAFT ANGLES ARE	30°	BY	AGJ
UNSPECIFIED DRAFT ANGLES ARE	30°	DATE	5-10-99
UNSPECIFIED DRAFT ANGLES ARE	30°	BY	TRF
UNSPECIFIED DRAFT ANGLES ARE	30°	DATE	5-10-99
UNSPECIFIED DRAFT ANGLES ARE	30°	BY	AGJ
UNSPECIFIED DRAFT ANGLES ARE	30°	DATE	5-10-99
UNSPECIFIED DRAFT ANGLES ARE	30°	BY	TRF
UNSPECIFIED DRAFT ANGLES ARE	30°	DATE	5-10-99
UNSPECIFIED DRAFT ANGLES ARE	30°	BY	AGJ
UNSPECIFIED DRAFT ANGLES ARE	30°	DATE	5-10-99
UNSPECIFIED DRAFT ANGLES ARE	30°	BY	TRF
UNSPECIFIED DRAFT ANGLES ARE	30°	DATE	5-10-99
UNSPECIFIED DRAFT ANGLES ARE	30°	BY	AGJ
UNSPECIFIED DRAFT ANGLES ARE	30°	DATE	5-10-99
UNSPECIFIED DRAFT ANGLES ARE	30°	BY	TRF
UNSPECIFIED DRAFT ANGLES ARE	30°	DATE	5-10-99
UNSPECIFIED DRAFT ANGLES ARE	30°	BY	AGJ
UNSPECIFIED DRAFT ANGLES ARE	30°	DATE	5-10-99
UNSPECIFIED DRAFT ANGLES ARE	30°	BY	TRF
UNSPECIFIED DRAFT ANGLES ARE	30°	DATE	5-10-99
UNSPECIFIED DRAFT ANGLES ARE	30°	BY	AGJ
UNSPECIFIED DRAFT ANGLES ARE	30°	DATE	5-10-99
UNSPECIFIED DRAFT ANGLES ARE	30°	BY	TRF
UNSPECIFIED DRAFT ANGLES ARE	30°	DATE	5-10-99
UNSPECIFIED DRAFT ANGLES ARE	30°	BY	AGJ
UNSPECIFIED DRAFT ANGLES ARE	30°	DATE	5-10-99
UNSPECIFIED DRAFT ANGLES ARE	30°	BY	TRF
UNSPECIFIED DRAFT ANGLES ARE	30°	DATE	5-10-99
UNSPECIFIED DRAFT ANGLES ARE	30°	BY	AGJ
UNSPECIFIED DRAFT ANGLES ARE	30°	DATE	5-10-99
UNSPECIFIED DRAFT ANGLES ARE	30°	BY	TRF
UNSPECIFIED DRAFT ANGLES ARE	30°	DATE	5-10-99
UNSPECIFIED DRAFT ANGLES ARE	30°	BY	AGJ
UNSPECIFIED DRAFT ANGLES ARE	30°	DATE	5-10-99
UNSPECIFIED DRAFT ANGLES ARE	30°	BY	TRF
UNSPECIFIED DRAFT ANGLES ARE	30°	DATE	5-10-99
UNSPECIFIED DRAFT ANGLES ARE	30°	BY	AGJ
UNSPECIFIED DRAFT ANGLES ARE	30°</		