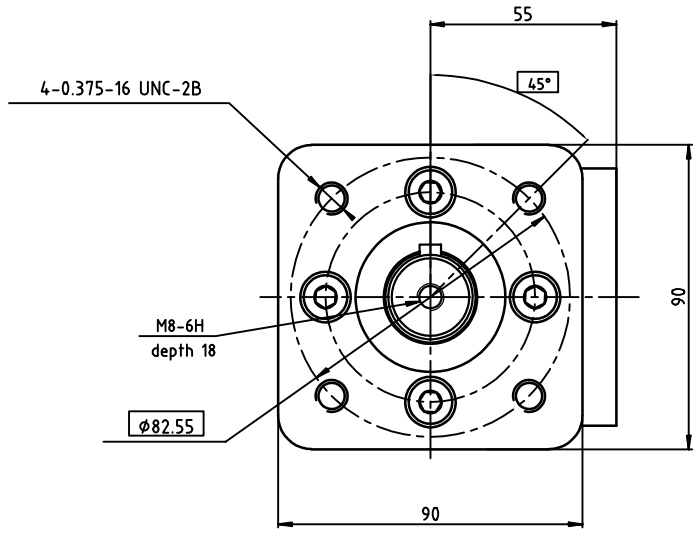
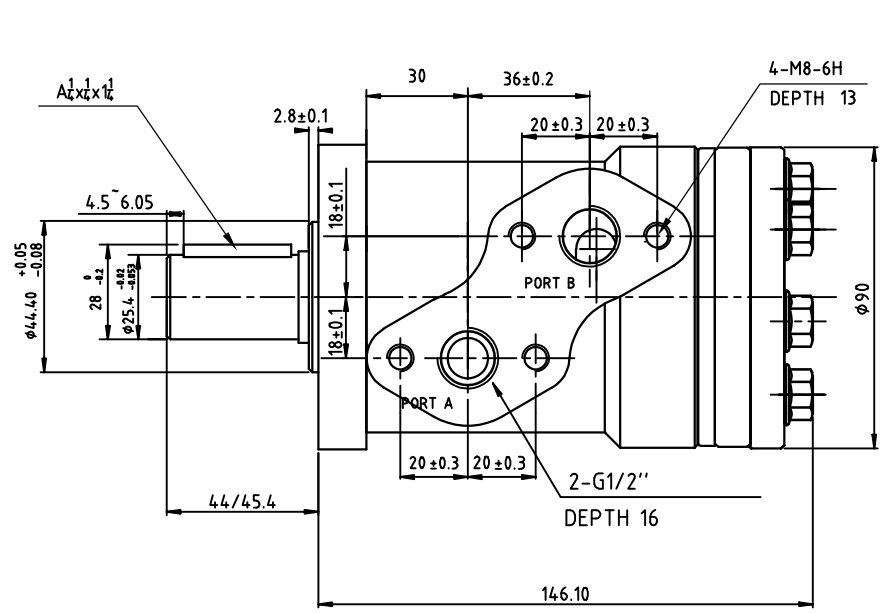


XCEL



EATON	
motor type	CH-80
part number	016-0100-002
disp. cc/r	80
rated. flow(LPM)	57
Int. flow(LPM)	68
rated pressure (Bar)	124
int. pressure (Bar)	138
High temp. °C	80
clealiness	ISO18/13
recomanded oil	DTE26
paint	black

- NOTE:
- 1, Case pressure should not be higher than 5 MPa.
 - 2,A simultaneous maximum flow and maximum pressure NOT recommended.
 - 3,Standard rotation: CW-when A port pressuried (View from the shaft end)
 - 4,Model Code: MCH080AD03AA010000A000C00B

 Eaton Hydraulic Systems (Shanghai) Co., Ltd		TITLE	NUMBER		
		CH MOTOR	016-0100-002		
MATERIAL		CAST NUMBER			
THE ASSEMBLE DRAWING		MARK	WEIGHT	SCALE	
Design	Craft	S	P	1:1	
Drawing	Standard	SHEET 1 OF 1			
Correct	Approval				
Check	Date				