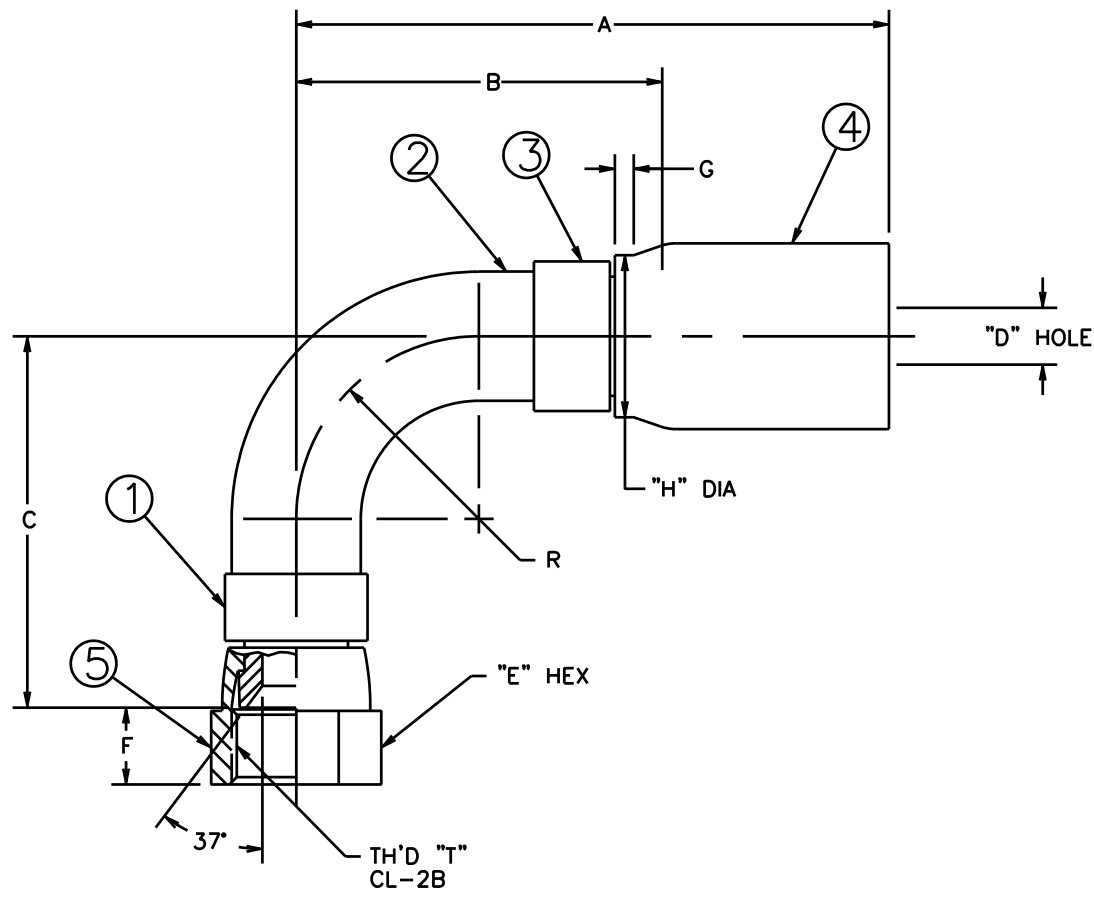


AEROQUIP PART NUMBER	TH'D "T"	A REF	B ±.062	C ±.062	D REF	E REF	F REF	G ±.02	H ±.005	R REF
FJ9802-1212S	1 1/16-12	4.32	2.244	2.351	.56	1.25	.57	.16	1.390	1.25
FJ9802-1616S	1 5/16-12	5.25	2.825	3.040	.76	1.50	.60	.16	1.645	1.50

REVISIONS			
REV.	DESCRIPTION	DATE	APPROVED
A	REDRAWN - LAST REV. "A" ADDED NIPPLE ASSEMBLY BREAKDOWN, DIMENSIONS AND NOTES	10-29-91	EN-F12449 DAI-22132



FJ9802-1616S	FC2708-1616S	FC1109-16-501S	FC1417-1616S	FC1414-16S	210204-16S
FJ9802-1212S	FC2708-1212S	FC1109-12-001S	FC1417-1212S	FC1414-12S	234-210204-12
AEROQUIP PART NUMBER	① SHOULDER	② ELBOW	③ NIPPLE	④ SOCKET	⑤ NUT

LIST OF MATERIALS

ITEM NO.	MATERIAL
1	STEEL
2	STEEL
3	STEEL
4	STEEL
5	STEEL

DRAWN D. JUTTE CHECKED J. MINNIG APPROVED J. MINNIG RELEASED EN-F12449 PROJECT NO. DAI-22132 DESIGN APPROVED APPROVED	DATE 10-29-91 DATE 11-7-91 DATE 11-7-91 DATE 11-7-91 APC NO.	AERQUIP CORPORATION Industrial Products Group Maumee, Ohio, U.S.A.	DRAWING TITLE <b>FITTING ASSEMBLY</b> 90°, SAE 37° SWIVEL, FC273 HOSE
SIZE (CAGE) CODE NO. DRAWING NUMBER C 01276 FJ9802-S		SHEET	

- THERE SHOULD BE NO SOCKET MOVEMENT ON THE NIPPLE AFTER CRIMPING.
- PROCESS AS FOLLOWS:
  - BRAZE PER ACES 67P2.
  - ZINC PLATE PER ACES 16P47.
  - ASSEMBLE NUT.
  - ASSEMBLE SOCKET.

CONVERTED DRAWING CADAM to AutoCAD 8/98

DWG. NO. FJ9802-S SH. A REV. A