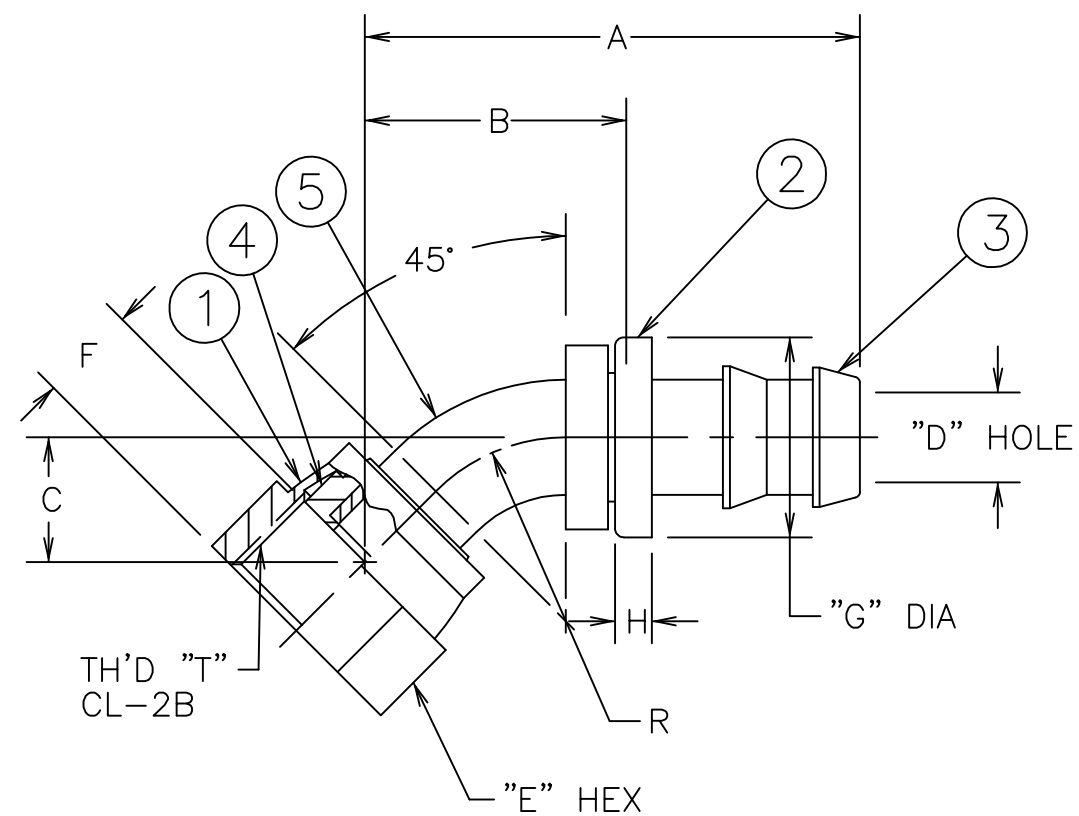


PART NUMBER	TH'D "T"	A ±.062	B	C	D REF	E REF	F REF	G ±.010	H REF	R REF	PROCESS AS FOLLOWS
FJ7023-0404S	9/16-18	1.674	.92	.470 350	.17	.69	.32	.615	.16	.44	△
FJ7023-0606S	11/16-16	1.839	.97	.490 370	.24	.81	.38	.725	.16	.50	△
FJ7023-0808S	13/16-16	2.346	1.33	.550 530	.37	.94	.43	.870	.16	.75	△
FJ7023-1212S	1 3/16-12	3.322	1.80	.890 770	.58	1.38	.57	1.185	.16	1.25	△

REVISIONS			
REV.	DESCRIPTION	DATE	APPROVED
C	REDRAWN ON CAD - LAST REV. "B" (1) 2.346 WAS 2.339 & 3.331 WAS 3.322 (2) 1.33 WAS 1.32 & 1.81 WAS 1.80 (3) NOTES #1(b), 2(b) & 3(b) WERE: "CADMIUM PLATE PER ACES 16P6"	3-20-92	EN-F12791 ER-F12791
D	(1) ADDED NOTE #4	9-23-92 P.T.R.	EN-F13373 DAI-23967
E	(1) REMOVED AND INACTIVATED FJ7023-1212S (2) REMOVED NOTE #1 "PROCESS AS FOLLOWS: (a) BRAZE PER ACES 67P2 OR P3 (b) ZINC PLATE PER ACES 16P47 (c) ASSEMBLE NUT PER ACES 2409P1 (d) ASSEMBLE CAP"(MTMI)	9-15-95 M.M.	EN-F15724 DP-1063
F	(1) ADDED FJ7023-1212S & NOTE #5	1999-03-15 R.D.G.	EN-F18696 RPS-4743

① ② ③ ④ ⑤



5. PROCESS AS FOLLOWS:
 (a) BRAZE PER ACES 67P2 OR P3.
 (b) ZINC PLATE PER ACES 16P47.
 (c) ASSEMBLE CAP.
 (d) ASSEMBLE NUT PER ACES 2409P1. ①

4. CAN BE MADE FROM TUBING PER SPECIFICATIONS ON ELBOW DRAWING. ①

3. PROCESS AS FOLLOWS:
 (a) BRAZE NIPPLE PER ACES 67P2, P3 OR P26 AND SHOULDER PER ACES 67P2 OR P3.
 (b) ZINC PLATE PER ACES 16P47.
 (c) ASSEMBLE NUT PER ACES 2409P1.
 (d) ASSEMBLE CAP. ③

2. PROCESS AS FOLLOWS:
 (a) BRAZE PER ACES 67P3 OR P26.
 (b) ZINC PLATE PER ACES 16P47.
 (c) ASSEMBLE NUT PER ACES 2409P1.
 (d) ASSEMBLE CAP. ③

1. ③ ②

① ②

FJ7023-1212S	FC1473-12S	4213-1-12B	4131-12S	FC1500-1212S	404501-12S
FJ7023-0808S	FC1473-08S	4213-1-8B	4131-8S	FC1500-0808S	404501-8S
FJ7023-0606S	FC1473-06S	4213-1-6B	4131-6S	FC1500-0606S	404501-6S
FJ7023-0404S	FC1473-04S	4213-1-4B	4131-5-4S	FC1500-0405S	FC1385-05S
PART NUMBER	① NUT	② HOSE CAP	③ NIPPLE	④ SHOULDER	⑤ ELBOW △

LIST OF MATERIALS

ITEM NO.	MATERIAL	DRAWN TERRY BAKER	DATE 3-20-92	FLUID CONVEYANCE DIVISION	
1	STEEL	CHECKED R.D.GARRETT	DATE 3-25-92	DRAWING TITLE FITTING ASSEMBLY 45°, ORS FEMALE SWIVEL, 2556 HOSE SIZE (CAGE) CODE NO. DRAWING NUMBER C 01276 FJ7023-S ITEM TYPE DADA U SHEET	
2	BRASS	APPROVED R.D.GARRETT	DATE 3-25-92		
3	STEEL	RELEASED EN-F12791	DATE 3-25-92		
4	STEEL	PROJECT NO. ER-F12791	APC NO.		
5	STEEL	DESIGN APPROVED			