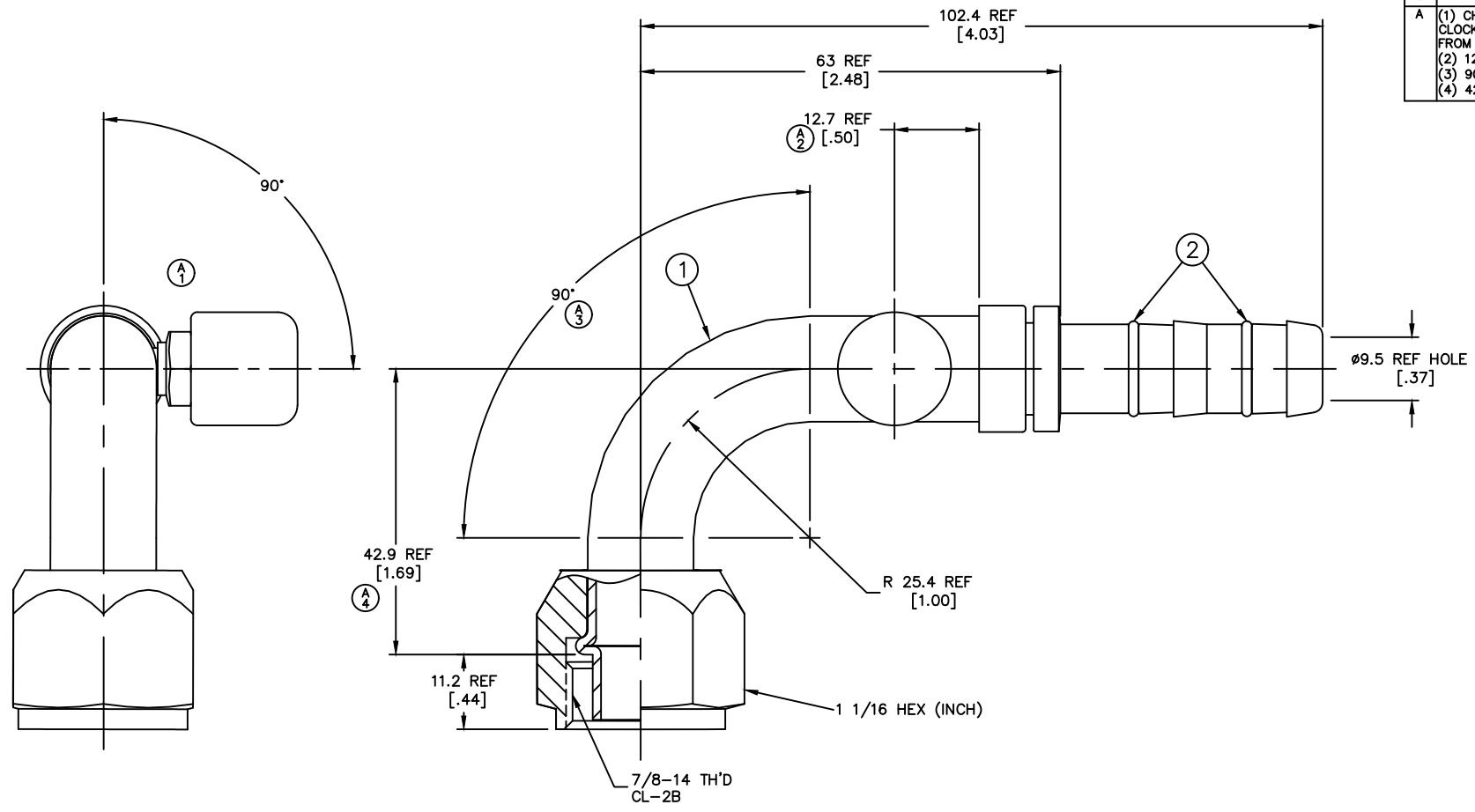


THE REPRODUCTION, DISTRIBUTION AND UTILIZATION OF THIS DOCUMENT AS WELL AS THE COMMUNICATION OF ITS CONTENTS TO OTHERS WITHOUT EXPLICIT AUTHORIZATION IS PROHIBITED. OFFENDERS WILL BE HELD LIABLE FOR THE PAYMENT OF DAMAGES. ALL RIGHT RESERVED IN THE EVENT OF THE GRANT OF A PATENT, UTILITY MODEL OR DESIGN. (PER ISO 10100)

REVISIONS			
REV	DESCRIPTION	DATE	APPROVED
A	(1) CHARGEPORT WAS 45° CLOCKWISE NOW 90° CLOCKWISE FROM CENTER. (2) 12.7±0.8[.50±.03] (3) 90°±2° (4) 42.9±1.5[1.69±.60]	2001-09-17	EN-F22177 DP-1256
		DAS/WRH	



METRIC

2. DIMENSIONS ARE IN MILLIMETERS [INCHES].
1. PROCESS AS FOLLOWS:
(a) LUBRICATE O-RINGS AND ASSEMBLE TO NIPPLE AS SHOWN

FJ3444-1010S	FJ2444-1010S	1F40106-10			
AEROQUIP PART NUMBER	① NIPPLE ASSEMBLY	② O-RING (2 REQ'D)			
LIST OF MATERIALS					
ITEM NO.	MATERIAL	DRAWN L. OWEN	FLUID CONVEYANCE DIVISION DRAWING TITLE FITTING ASSEMBLY 90° FEMALE O-RING PILOT (LONG) WITH CHARGE PORT, GH134 HOSE SIZE A2 DRAWING NUMBER FJ3444-1010S REV A SCALE 2/1 DIST U CAGE CODE 01276 SHEET		
1	STEEL	CHECKED D. BAILEY			
2	HNBR	APPROVED J. BAHNSEN			
		RELEASE DATE 2001-06-08			
		EN-F21798 DP-1256			
		THIRD ANGLE PROJECTION			
		ITEM TYPE:			

DWG. NO. FJ3444-1010S