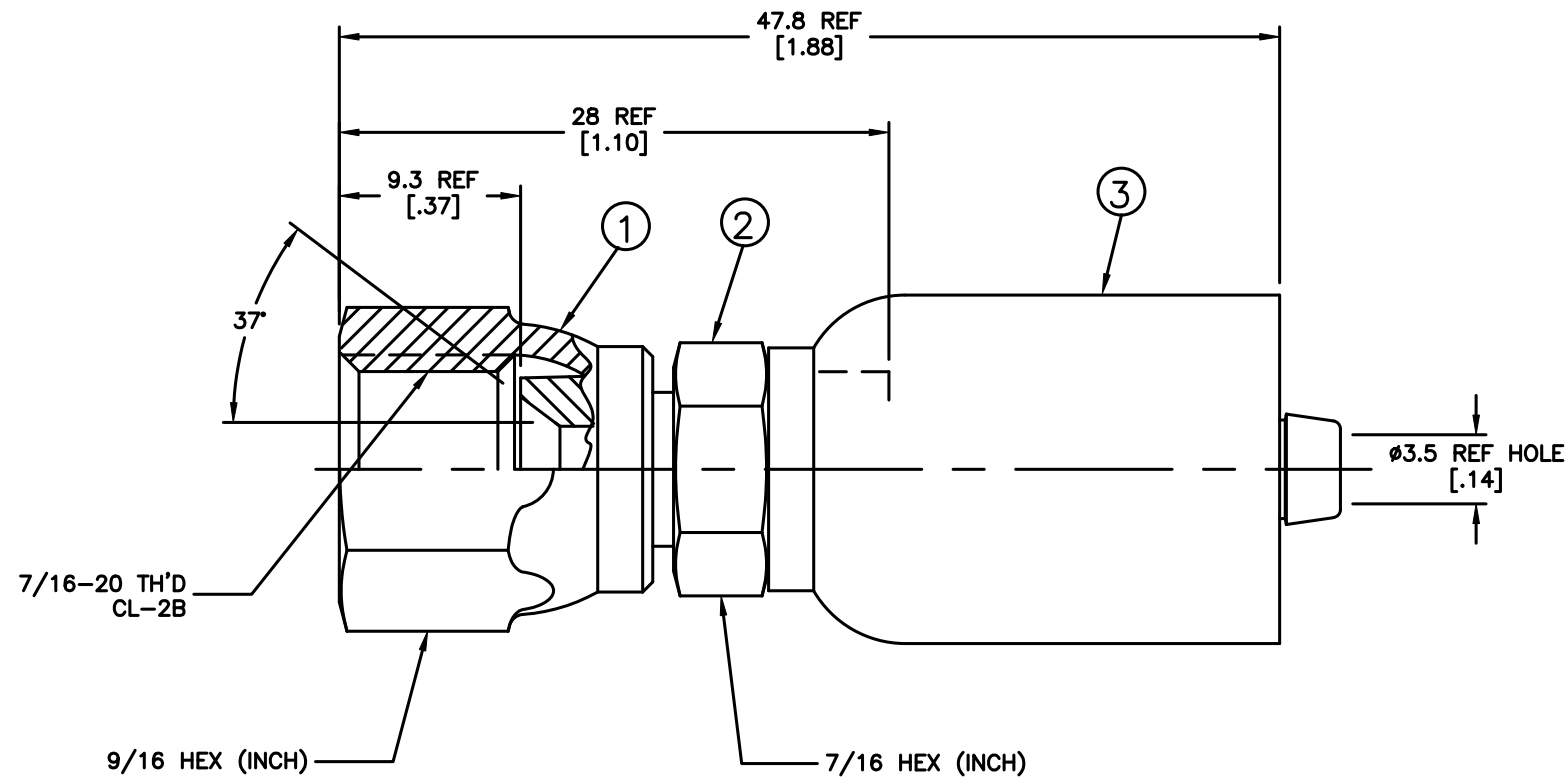


THE INFORMATION DISCLOSED ON THIS DRAWING IS PROPRIETARY AND SHALL NOT BE DISCLOSED, USED, OR DUPLICATED FOR PROCUREMENT OR MANUFACTURING PURPOSES WITHOUT THE EXPRESS WRITTEN CONSENT OF AEROQUIP CORPORATION. [DFARS 252.227-7013(d)(2)]

REVISIONS			
REV	DESCRIPTION	DATE	APPROVED
C	REACTIVATED AS PER REV "A" TO SHOW AEROQUIP DESIGN	2006-05-12 RHJ/KBM	EN-F30034 DP-1299



3. DIMENSIONS ARE IN MILLIMETERS [INCHES].
2. THERE SHOULD BE NO SOCKET MOVEMENT ON THE NIPPLE AFTER CRIMPING.
1. PROCESS AS FOLLOWS:
 - (a) CRIMP NUT PER ACES 2813.
 - (b) CRIMP SOCKET PER ACES 2409P17.

FJ3114-0404S	210204-4S	FW1231-0404S	FW1186-04S	
AEROQUIP PART NUMBER	① NUT	② NIPPLE	③ SOCKET	
LIST OF MATERIALS				
ITEM NO.	MATERIAL	DRAWN LaTanya Wraggs		
1	STEEL	CHECKED R. D. WEBB		
2	STEEL	APPROVED R.D.GARRETT		
3	STEEL	RELEASE DATE 2000-05-23		
		EN-F19882 DP-1290		
		THIRD ANGLE PROJECTION		
		ITEM TYPE: EDEA		
		AEROQUIP CORPORATION Industrial Products Group Maumee, Ohio, U.S.A.		
		DRAWING TITLE FITTING ASSEMBLY SAE 37° SWIVEL, 1503 HOSE		
		SIZE A2	DRAWING NUMBER FJ3114-0404S	REV C
		SCALE 4/1	DIST U	CAGE CODE 01276
		SHEET		

REV. C
 SH.
 DWG. NO. FJ3114-0404S