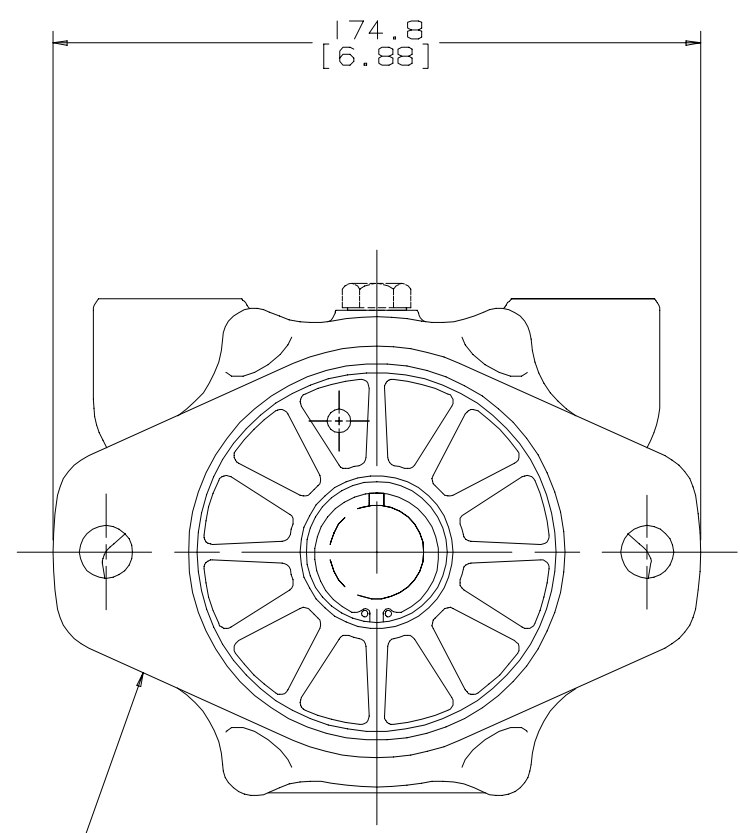
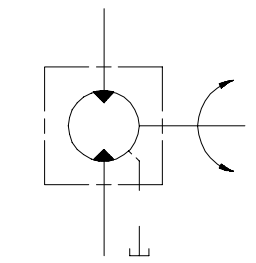
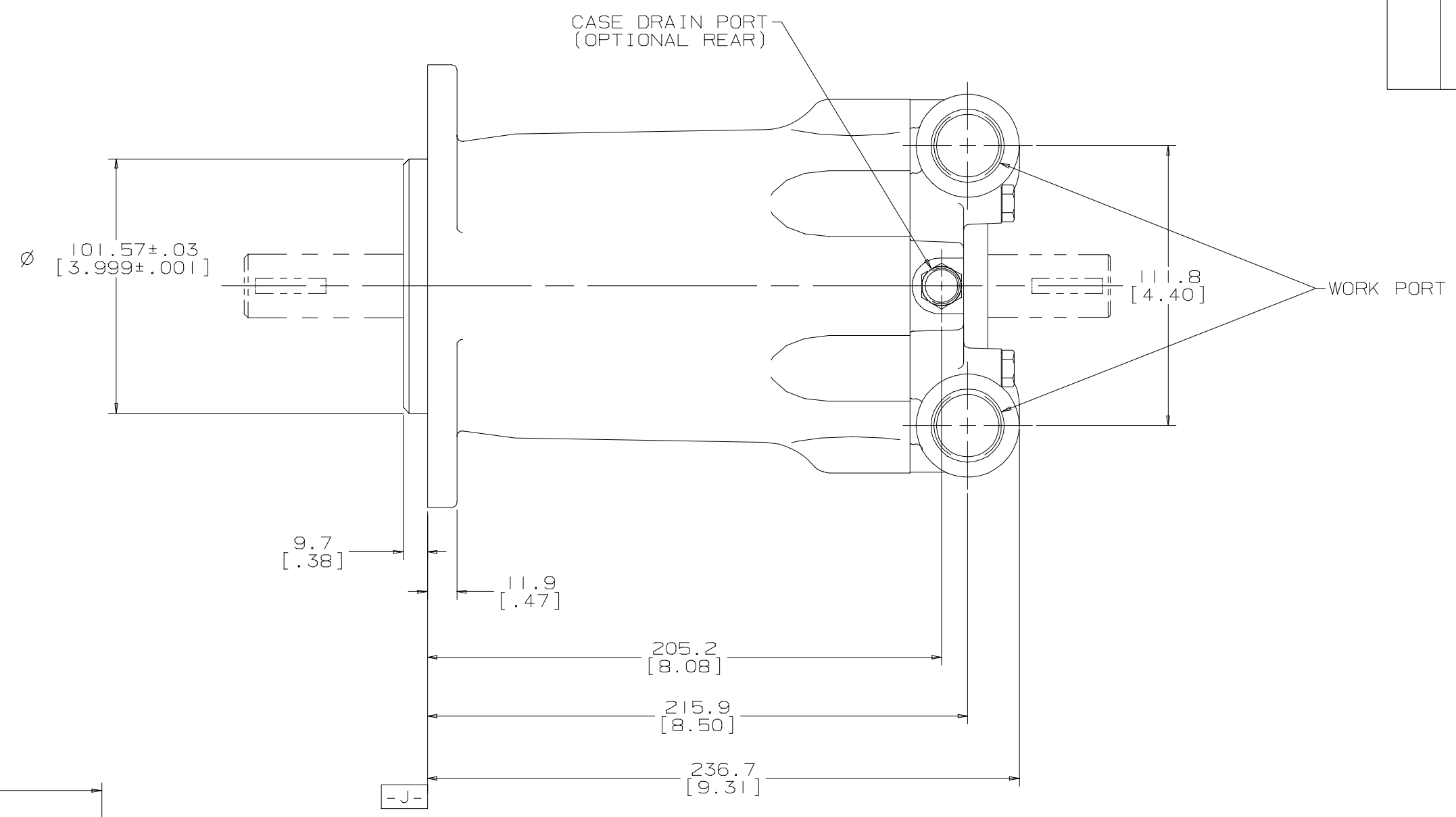
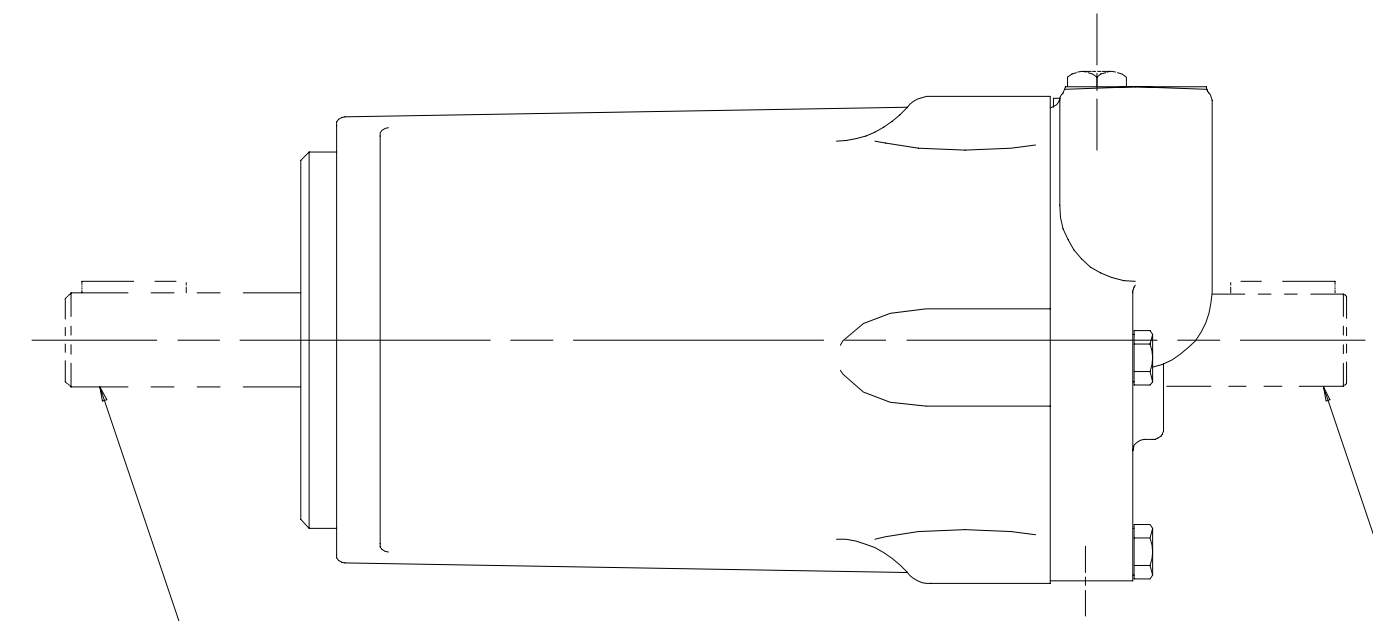


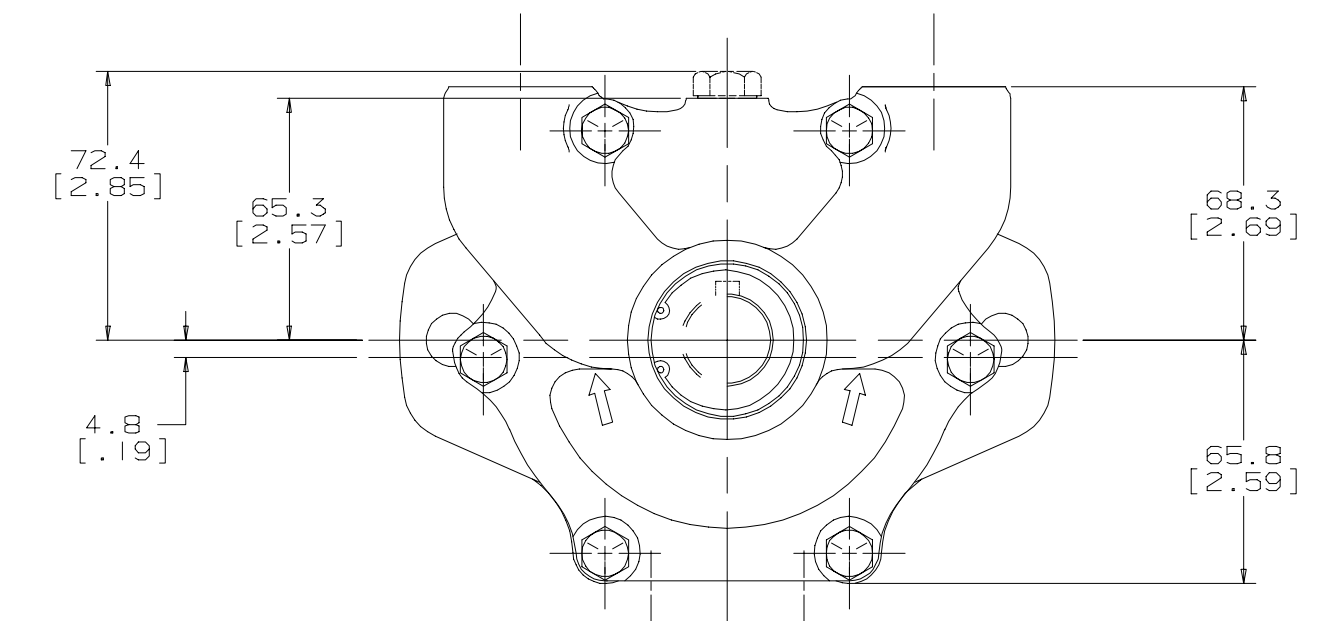
SYM	REVISION	BY	DATE	ECN
A	ENGINEERING RELEASE	RAB	3/11/92	21468



FOR FRONT MOUNT CONFIGURATION SEE SEPARATE DRAWING



FOR SHAFT CONFIGURATION SEE SEPARATE DRAWING



FOR SHAFT CONFIGURATION SEE SEPARATE DRAWING

NOTE

- UNIT MUST BE INSTALLED IN SUCH A POSITION THAT THE CASE DRAIN ASSURES AN OIL LEVEL AT OR ABOVE UNIT CENTER LINE OIL LEVEL MUST BE AT CENTER LINE OR ABOVE BEFORE STARTING
- ARROW AT INLET INDICATES ROTATION
- INPUT FLOW MUST NOT EXCEED 37.8 L/min [10 gal/min] DURING THE FIRST REV OF THE MOTOR UNLESS PISTON CAVITIES ARE PURGED OF AIR THEREAFTER FULL GALLONAGE MAY BE ACCEPTED

UNLESS OTHERWISE SPECIFIED ALL DIMENSIONS ARE IN INCHES <input type="checkbox"/> MILLIMETERS <input checked="" type="checkbox"/>		DRAWING BASED ON ANSI Y14.5M-1982	
TOLERANCES .x ± REF .xx ± REF .xxx ± REF < ±		THE REPRODUCTION, DISTRIBUTION, AND UTILIZATION OF THIS DOCUMENT, AS WELL AS THE COMMUNICATION OF ITS CONTENTS TO OTHERS WITHOUT EXPLICIT AUTHORIZATION IS PROHIBITED. OFFENDERS WILL BE HELD LIABLE FOR THE PAYMENT OF DAMAGES. ALL RIGHTS RESERVED IN THE EVENT OF THE GRANT OF A PATENT, UTILITY MODEL, OR DESIGN. (PER ISO 16016)	
DRAIN BY/DATE	RAB 9-17-91	MATERIAL/HEAT TREAT	
CHECKED BY/DATE			
UNSPECIFIED RADII ARE	ENGRS BY/DATE	TITLE	
UNSPECIFIED DRAFT ANGLES ARE	METALLURGY BY/DATE	PISTON MOTOR INSTALLATION	
DRAWING FORMAT CAD <input checked="" type="checkbox"/> MANUAL <input type="checkbox"/>	THIRD ANGLE PROJECTION	NUMBER	
	DO NOT SCALE	A-428	
		SCALE	1/1 SHEET 1 OF 1

G HK

