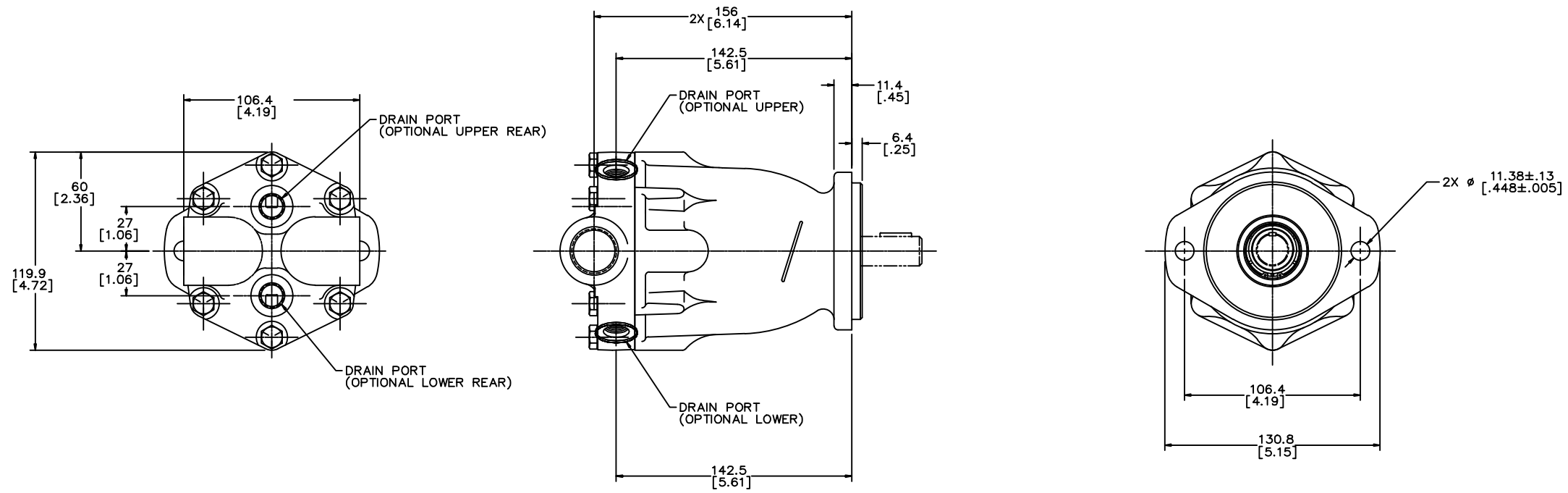
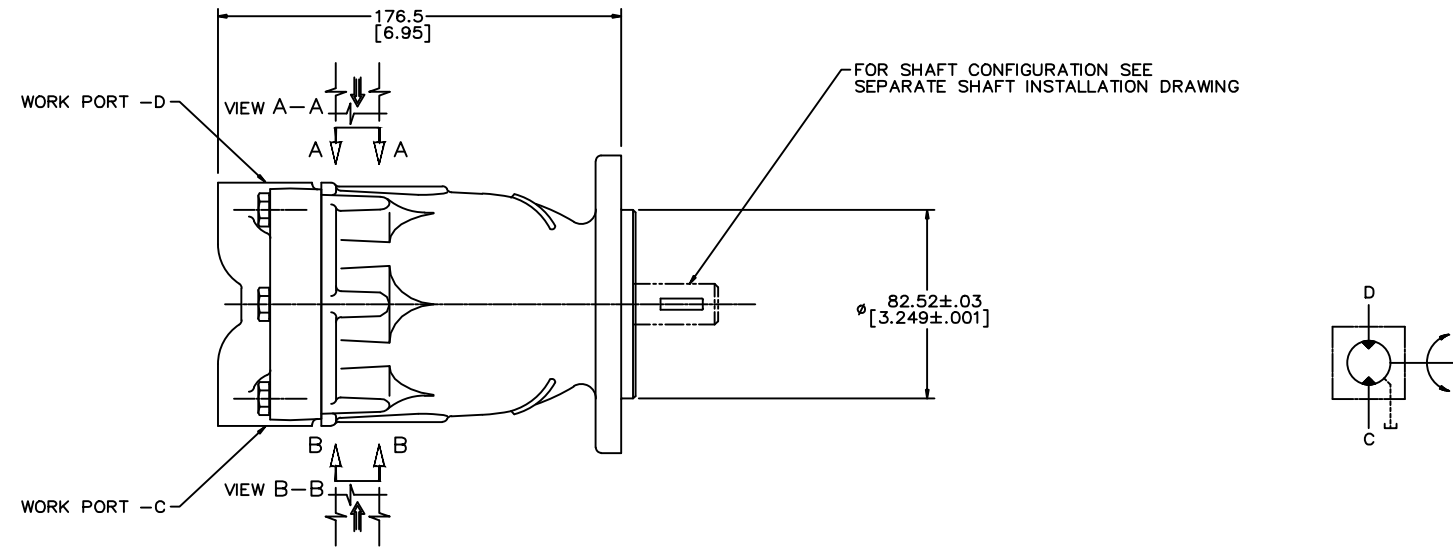


| REV | DESCRIPTION | BY | CHK | DATE | ECN / MPS |
|-----|--|-----|-----|----------|-----------|
| A | ENGINEERING RELEASE | JS | --- | 03-11-92 | 21468 |
| B | REVISED | CLL | --- | 03-22-95 | 26633 |
| C | -1)(5C)ADDED DRAIN PORT (OPTIONAL LOWER) -2)(5C)ADDED 142.5[5.61] | JMS | --- | 05-29-96 | M15423 |
| D | -1)(5E)ADDED DRAIN PORT (OPTIONAL UPPER) -2)(5E)ADDED 142.5[5.61] | NSJ | JEM | 04-06-11 | M80380B |
| E | -1)(2C)DIM WAS 130[5.12] -2)(4E)DIM WAS 10.7[.42] | KCS | VRS | 11-18-22 | 0138211 |



NOTE

- UNIT MUST BE INSTALLED IN SUCH A POSITION THAT THE CASE DRAIN ASSURES AN OIL LEVEL AT OR ABOVE UNIT CENTER LINE OIL MUST BE AT CENTER LINE OR ABOVE BEFORE STARTING
- ROTATION ARROW AT HOUSING ASSY INDICATES ROTATION WHEN PRESSURIZING RELATED PORT

REVIEWED FOR CLASSIFICATION OF CHARACTERISTICS PER ESP-042

| UNLESS OTHERWISE SPECIFIED ALL DIMENSIONS ARE IN | | DRAWING BASED ON ASME Y14.5M-2009 | |
|--|-------------------------------------|--|---------------------------|
| INCHES | <input type="checkbox"/> | THE REPRODUCTION, DISTRIBUTION, AND UTILIZATION OF THIS DOCUMENT, AS WELL AS THE COMMUNICATION OF ITS CONTENTS TO OTHERS WITHOUT EXPLICIT AUTHORIZATION IS PROHIBITED. OFFENDERS WILL BE HELD LIABLE FOR THE PAYMENT OF DAMAGES. ALL RIGHTS RESERVED IN THE EVENT OF THE GRANT OF A PATENT, UTILITY MODEL, OR DESIGN (PER ISO 16016) | |
| MILLIMETERS | <input checked="" type="checkbox"/> | | |
| TOLERANCES | | | |
| .X ± | --- | DRAWN RAB | MATERIAL/HEAT TREAT |
| .XX ± | --- | BY/DATE 9-29-91 | --- |
| .XXX ± | --- | CHECKED DAC | --- |
| < ± | --- | BY/DATE 4-29-92 | --- |
| UNSPECIFIED RADI ARE: | --- | ENGRG DMW | TITLE |
| --- | --- | BY/DATE 4-29-92 | PISTON MOTOR INSTALLATION |
| UNSPECIFIED DRAFT ANGLES ARE: | --- | METALURGY | --- |
| --- | --- | BY/DATE | --- |
| --- | --- | THIRD ANGLE PROJECTION | --- |
| E SIZE | DO NOT SCALE | DO NOT SCALE | --- |
| | | SCALE | 1/1 |
| | | SHEET | 1 OF 1 |
| | | NUMBER | A-464-000 |