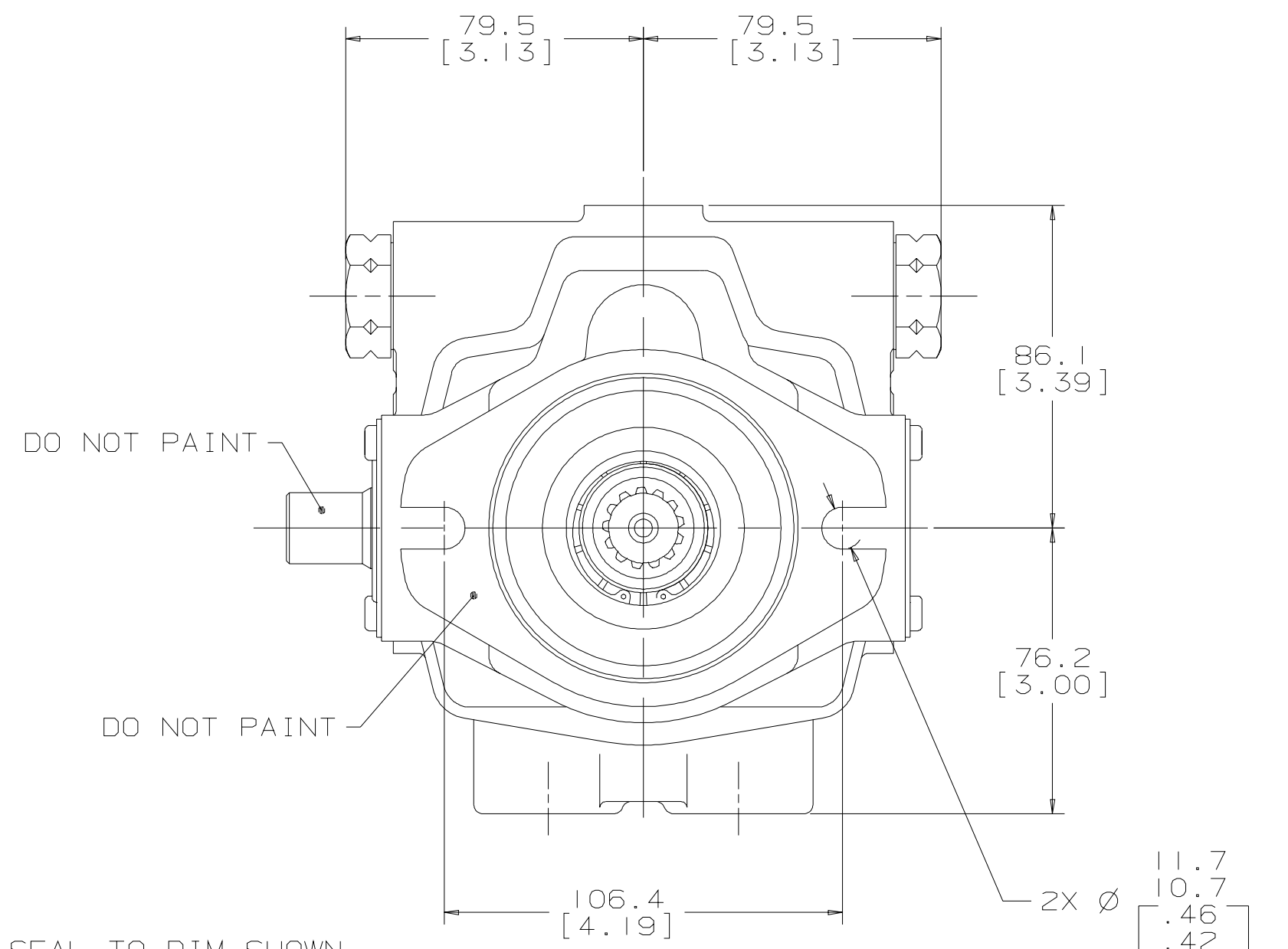
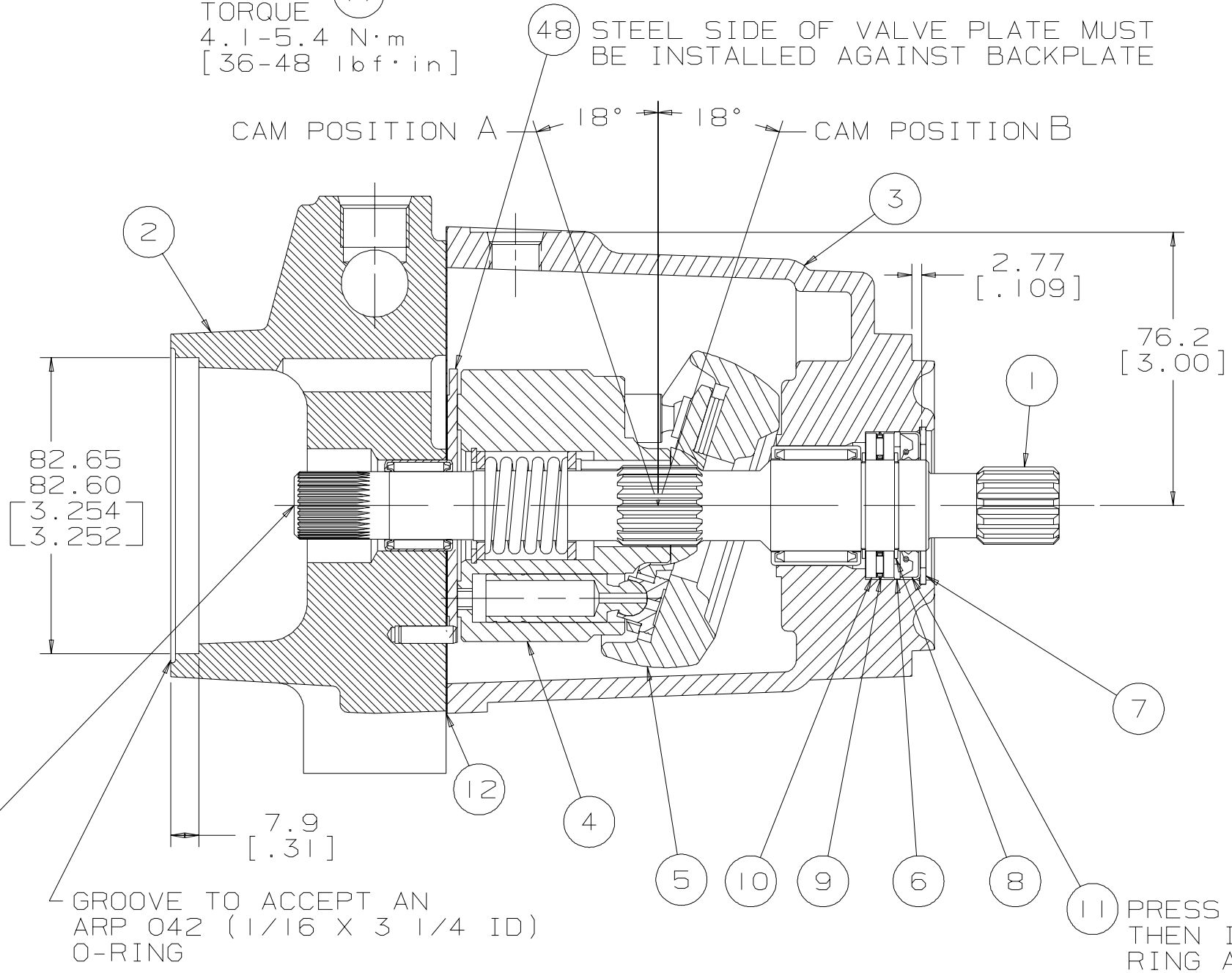
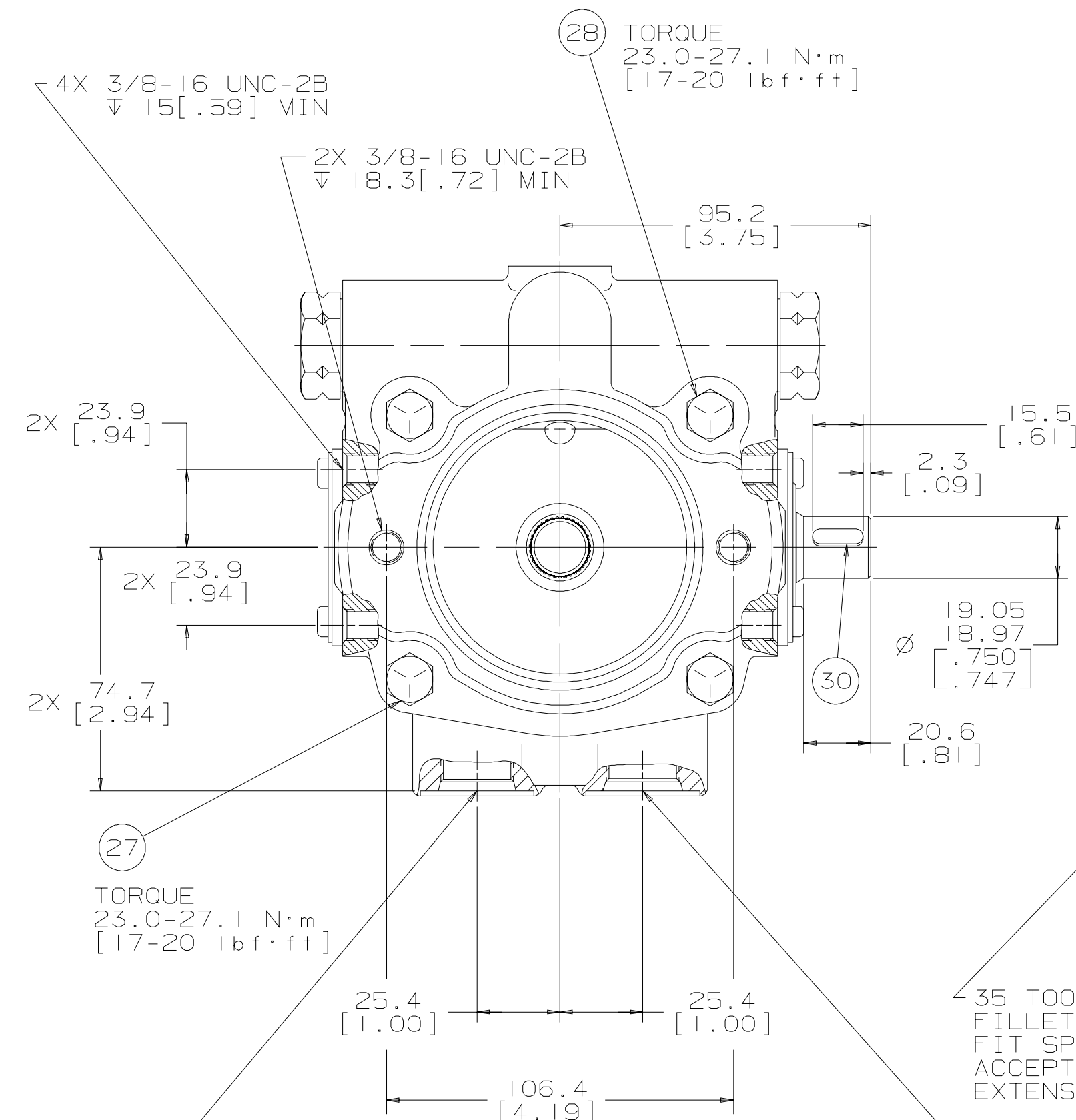
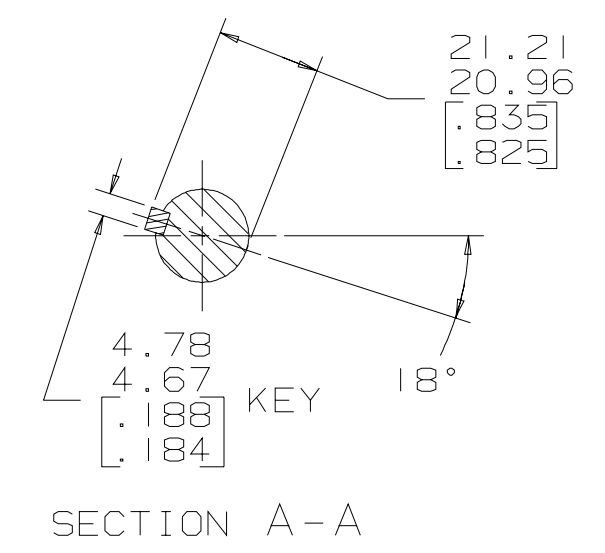
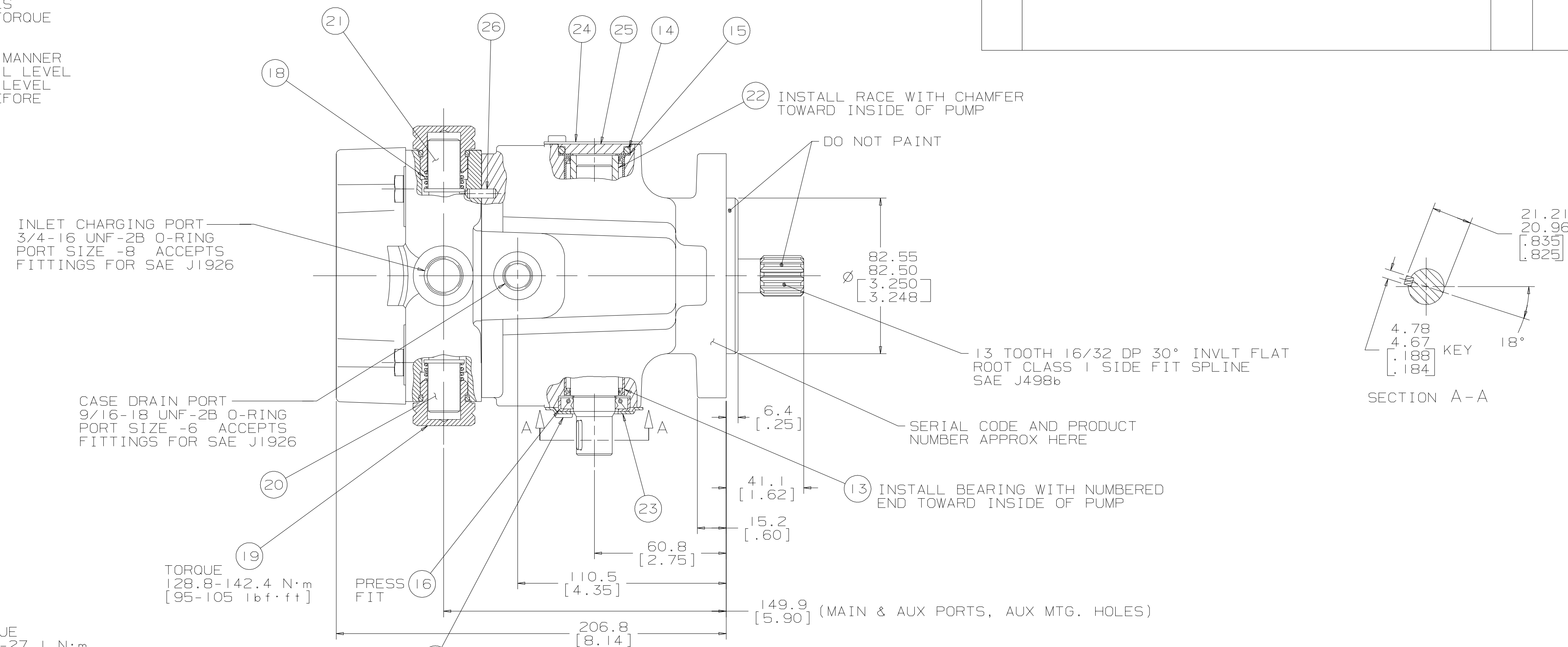


REV	DESCRIPTION	BY	DATE	ECN
A	ENGINEERING RELEASE	CLL	3/17/94	25343

NOTE
 1 INSTALL BACKPLATE ASSEMBLY ON HOUSING ASSEMBLY IN SUCH A MANNER THAT THE MATING SURFACES ARE PARALLEL AT ALL TIMES TIGHTEN CAP SCREWS EVENLY THEN TORQUE AS REQUIRED
 2 UNIT MUST BE INSTALLED IN SUCH A MANNER THAT THE CASE DRAIN ASSURES AN OIL LEVEL AT OR ABOVE UNIT CENTERLINE OIL LEVEL MUST BE AT CENTERLINE OR ABOVE BEFORE STARTING



35 TOOTH 48/96 DP INVLT FILLET ROOT CLASS 1 SIDE FIT SPLINE SAE J498b ACCEPTS 32 [1.26] SHAFT EXTENSION
 PRESS SEAL TO DIM SHOWN THEN INSTALL RETAINING RING AND PRESS BOTH PARTS UNTIL RETAINING RING IS SEATED IN THE GROOVE

PRESSURE PORT 'D'
 7/8-14 UNF-2B O-RING
 PORT SIZE -10 ACCEPTS
 FITTINGS FOR SAE J1926
 CAM POSITION B
 PRESSURE PORT 'C'
 7/8-14 UNF-2B O-RING
 PORT SIZE -10 ACCEPTS
 FITTINGS FOR SAE J1926
 CAM POSITION A

UNLESS OTHERWISE SPECIFIED ALL DIMENSIONS ARE IN INCHES <input type="checkbox"/> MILLIMETERS <input checked="" type="checkbox"/>	DRAWING BASED ON ANSI Y14.5M-1982	
TOLERANCES .x ± --- .xxx ± REF < ± ---	NOTICE TO PERSONS RECEIVING THIS DRAWING AND/OR TECHNICAL INFORMATION Eaton Corporation claims proprietary rights in the information disclosed herein. This document is issued in confidence and is not to be reproduced or used to manufacture anything shown herein without the written permission of the Eaton Corporation.	EATON Eaton Corporation Hydraulic Division 15151 Highway 5 Evan, Prairie, Mo. 65544
UNSPECIFIED RADII ARE --- UNSPECIFIED DRAFT ANGLES ARE ---	DRAWN BY/DATE: CLL 4/20/94 CHECKED BY/DATE: --- ENGRS BY/DATE: --- METALLPROY BY/DATE: ---	MATERIAL/HEAT TREAT: --- TITLE: 1.32 PISTON PUMP ASSY/INSTALL
DRAWING FORMAT CAD <input checked="" type="checkbox"/> MANUAL <input type="checkbox"/>	THIRD ANGLE PROJECTION	MICROINCHES <input type="checkbox"/> NUMBER MICROMETERS (MICROINCHES) <input checked="" type="checkbox"/> SCALE 1/1 SHEET 1 OF 1