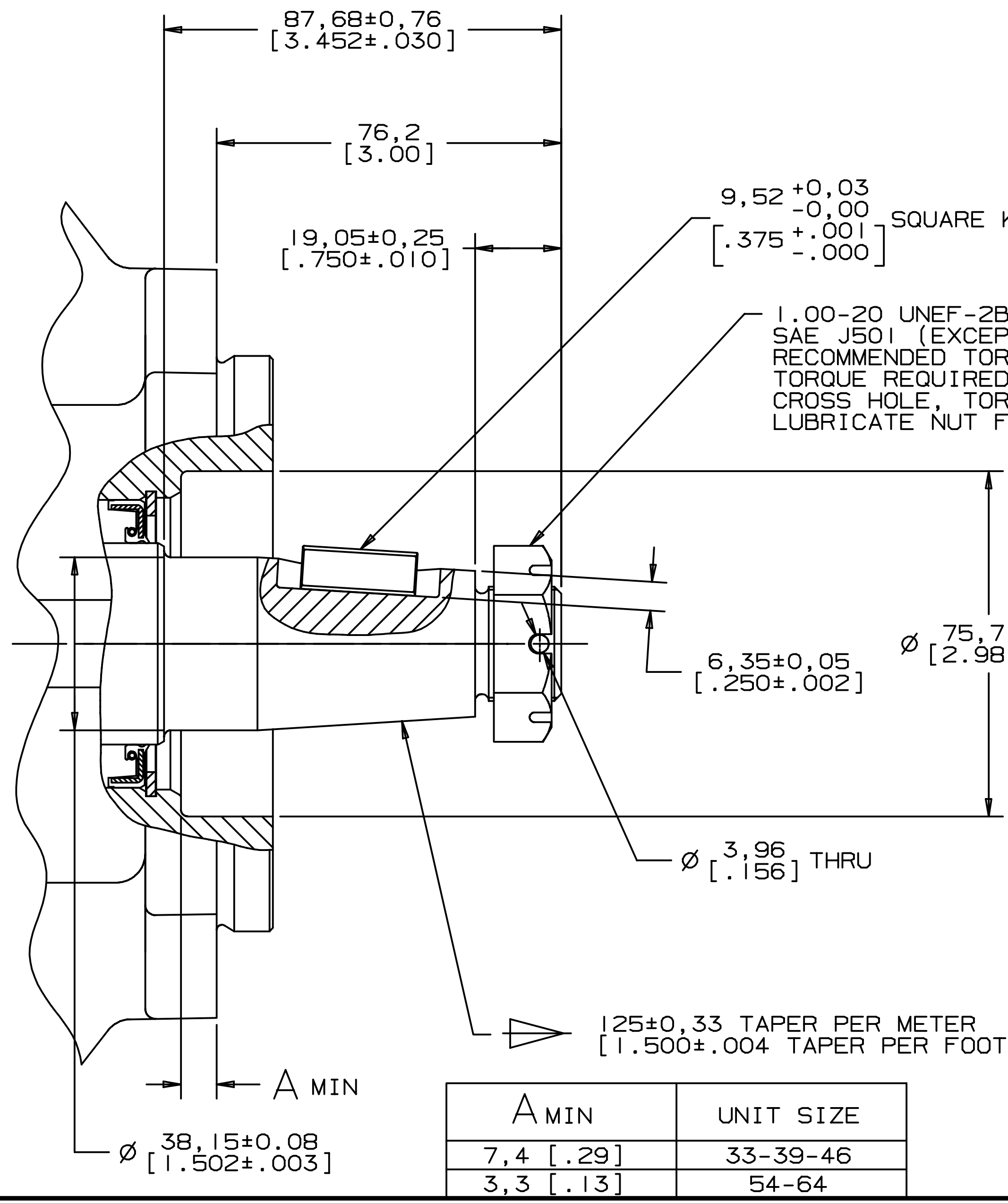


REV	DESCRIPTION	BY	CHK	DATE	ECN
A	ENGINEERING RELEASE	MLL	JGS	3-17-99	32506
B	REVISED	EMR	JED	7-14-99	33048



A MIN	UNIT SIZE
7,4 [.29]	33-39-46
3,3 [.13]	54-64

NOTE

- 1 TAPERED SHAFT OPTION COMPATIBLE WITH ISO 3019/1 (SAE-J744 SPECIFICATION)
- 2 ALL DIMENSIONS ARE NOMINAL UNLESS OTHERWISE SPECIFIED

UNLESS OTHERWISE SPECIFIED ALL DIMENSIONS ARE IN INCHES <input type="checkbox"/> MILLIMETERS <input checked="" type="checkbox"/> TOLERANCES .X ±----- .XX ±----- .XXX ±----- < ±----- UNSPECIFIED RADII ARE ----- UNSPECIFIED DRAFT ANGLES ARE ----- DRAWING FORMAT CADD <input checked="" type="checkbox"/> MANUAL <input type="checkbox"/>	DRAWING BASED ON ANSI Y14.5M-1982	
	NOTICE TO PERSONS RECEIVING THIS DRAWING AND / OR TECHNICAL INFORMATION Eaton Corporation claims proprietary rights in the information disclosed hereon. This document is issued in confidence and is not to be reproduced or used to manufacture anything shown hereon without the written permission of the Eaton Corporation.	
DRAWN BY/DATE MLL 2-16-99 CHECKED BY/DATE JGS 4-14-99 ENGRG BY/DATE GRK 4-15-99 METALLURGY BY/DATE -----	MATERIAL/HEAT TREAT TITLE TAPERED SHAFT INSTALLATION	
MICROINCHES <input type="checkbox"/> MICROMETERS <input type="checkbox"/> ARITHMETICAL AVERAGE <input checked="" type="checkbox"/>	NUMBER A-1362-012 SCALE 1/1 SHEET 1 OF 1	
THIRD ANGLE PROJECTION DO NOT SCALE		

