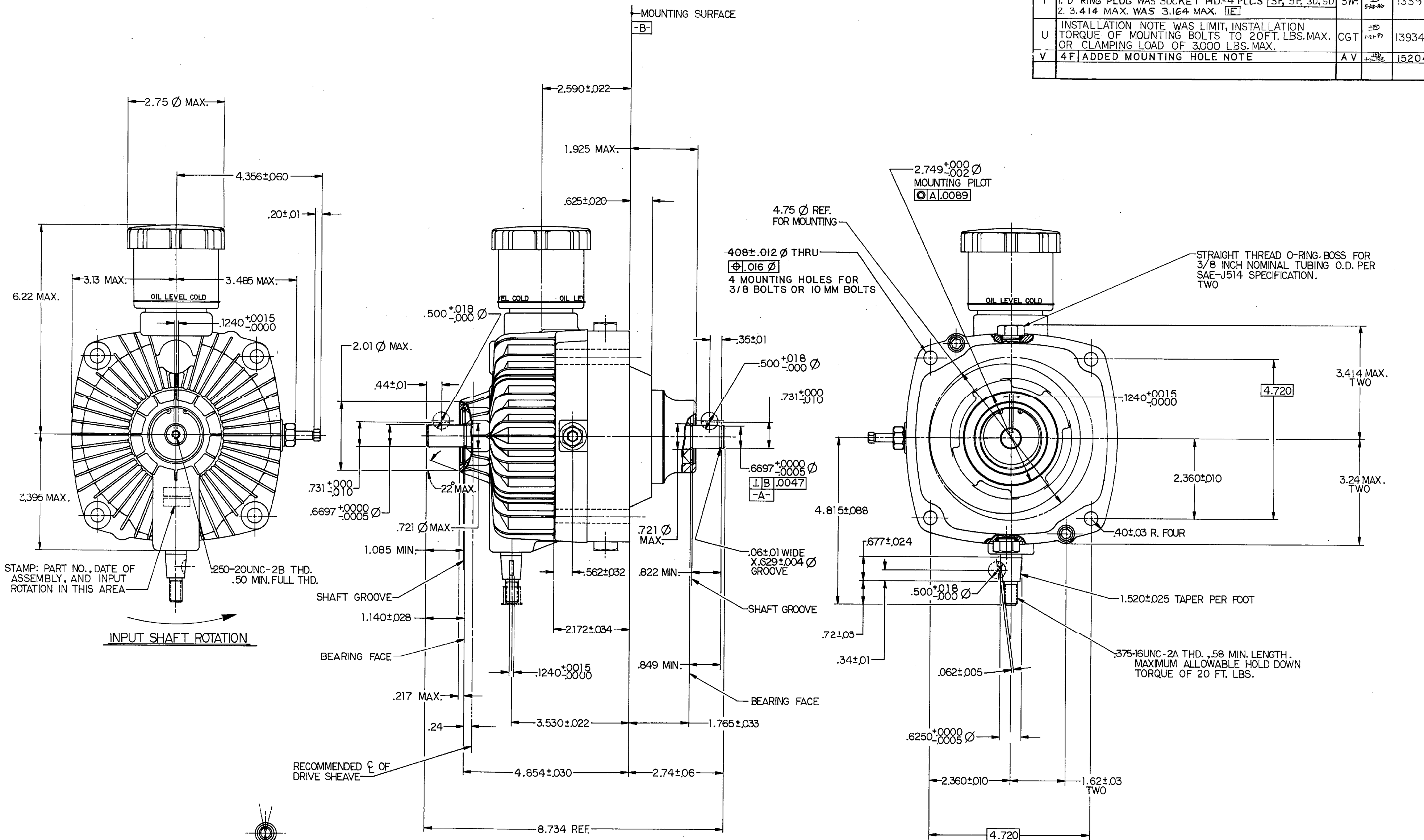


SYM	REVISION	BY	DATE	ECN
A	ENGINEERING RELEASE	JED	8-19-76	1490
S	REVISED AND REDRAWN	MB	10-20-85	5884
T	1. 0' RING PLUG WAS SOCKET HD.-4 PLCS 3F, 5F, 3D, 5D 2. 3.414 MAX. WAS 3.164 MAX. [E]	SVF	10-24-86	13397
U	INSTALLATION NOTE WAS LIMIT, INSTALLATION TORQUE OF MOUNTING BOLTS TO 20FT. LBS. MAX. OR CLAMPING LOAD OF 3,000 LBS. MAX.	CGT	1-21-87	13934
V	4F ADDED MOUNTING HOLE NOTE	AV	1-22-88	15204



STAMP: PART NO., DATE OF ASSEMBLY, AND INPUT ROTATION IN THIS AREA

INPUT SHAFT ROTATION

RECOMMENDED C OF DRIVE SHEAVE

MAX. RECOMMENDED CONTROL ANGLE 13° FOR CW OUTPUT ROTATION. STOPS MUST BE PROVIDED BY CUSTOMER ON LINKAGE.

MAX. RECOMMENDED CONTROL ANGLE 13° FOR CCW OUTPUT ROTATION. STOPS MUST BE PROVIDED BY CUSTOMER ON LINKAGE.

CONTROL SHAFT

**UNIT RATINGS**  
 MAXIMUM INPUT SPEED:  
 NOT TO EXCEED 3600 RPM  
 MAXIMUM OUTPUT SPEED:  
 2050 TO 2400 RPM  
 VOLUME OF OIL REQUIRED TO FILL CASE:  
 24.0 FLUID OZS. (706 ML)  
 UNIT DRY WEIGHT:  
 25 LBS.

**OPERATING CONDITIONS**  
**FLUIDS:**  
 REFER TO DATA SHEET EH-2043 FOR RECOMMENDED OIL SPECIFICATION.  
**CASE PRESSURE:**  
 CASE PRESSURE SHOULD NOT EXCEED 12 PSIG INTERMITTENT, 7 PSIG CONTINUOUS.  
**TEMPERATURE:**  
 MAXIMUM CONTINUOUS OPERATING TEMPERATURE SHOULD NOT EXCEED 180° F.  
**INSTALLATION:**  
 INSTALLATION TORQUE OF MOUNTING BOLTS, .375Ø, TO BE 18-22 FT. LBS./25-30 NM.

NOTICE TO PERSONS RECEIVING THIS DRAWING AND/OR TECHNICAL INFORMATION Eaton Corporation claims proprietary rights to the material disclosed herein. This drawing and/or technical information is issued in confidence for engineering information only and may not be reproduced or used to manufacture anything shown or referred to herein without direct written permission from Eaton Corporation to the user. This drawing and/or technical information is the property of Eaton Corporation and is loaned for mutual assistance, to be returned when its purpose has been served. THIS DRAWING AND/OR TECHNICAL INFORMATION IS THE PROPERTY OF EATON CORP.



DRAWN BY/DATE J.E.D. 8-19-76	MATERIAL/HEAT TREAT
CHECKED BY/DATE L.C.W.	CCW INPUT
ENGRG BY/DATE D.C.O.	TITLE 6 HYDROSTATIC TRANSMISSION
<b>DO NOT SCALE</b>	
THIRD ANGLE PROJECTION	NUMBER 000600-022
SCALE FULL SIZE SHEET 1 OF 1	