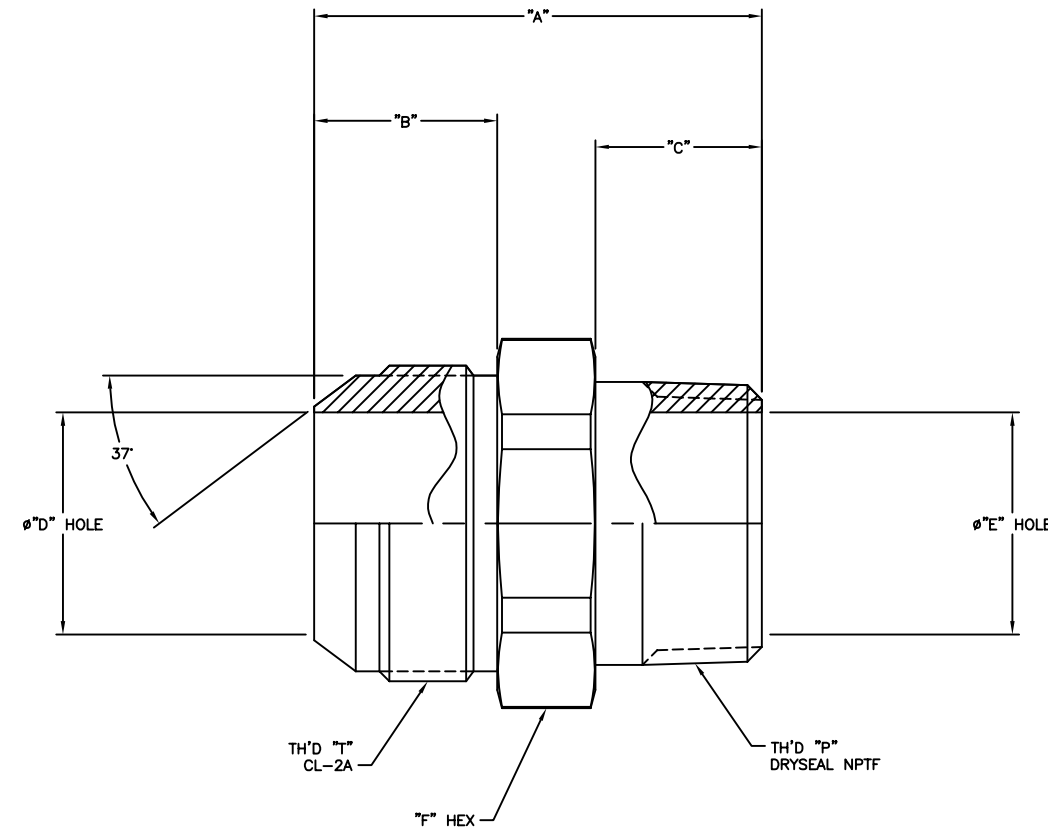


WEATHERHEAD PART NUMBER	AEROQUIPAD PART NUMBER	TH'D T _P	TH'D T _T	A REF	B REF	C REF	D REF	E REF	F REF (INCH)	
5217X2	259-2021-2-2	1/8-27	5/16-24	28.2 [1.11]	11.4 [.45]	10.2 [.40]	1.5 [.06]	4.8 [.19]	7/16	Ⓛ
	259-2021-2-3	1/8-27	3/8-24	29 [1.14]	12.2 [.48]	10.2 [.40]	3.0 [.12]	4.8 [.19]	7/16	
5217X4	259-2021-2-4	1/8-27	7/16-20	31 [1.22]	14 [.55]	10.2 [.40]	4.3 [.17]	4.3 [.17]	1/2	
	259-2021-2-5	1/8-27	1/2-20	31 [1.22]	14 [.55]	10.2 [.40]	5.8 [.23]	4.8 [.19]	9/16	
5217X6X2	259-2021-2-6	1/8-27	9/16-18	31.5 [1.24]	14.2 [.56]	10.2 [.40]	7.6 [.30]	4.8 [.19]	5/8	
5217X4X4	259-2021-4-4	1/4-18	7/16-20	36.1 [1.42]	14 [.55]	14.7 [.58]	4.3 [.17]	7.1 [.28]	9/16	
5217X5X4	259-2021-4-5	1/4-18	1/2-20	36.1 [1.42]	14 [.55]	14.7 [.58]	5.8 [.23]	7.1 [.28]	9/16	
5217X6	259-2021-4-6	1/4-18	9/16-18	36.3 [1.43]	14.2 [.56]	14.7 [.58]	7.1 [.28]	7.1 [.28]	5/8	
5217X8X4	259-2021-4-8	1/4-18	3/4-16	38.9 [1.53]	16.8 [.66]	14.7 [.58]	9.9 [.39]	7.1 [.28]	13/16	Ⓛ
5217X4X6	259-2021-6-4	3/8-18	7/16-20	36.1 [1.42]	14 [.55]	14.7 [.58]	4.3 [.17]	10.4 [.41]	3/4	
	259-2021-6-5	3/8-18	1/2-20	36.1 [1.42]	14 [.55]	14.7 [.58]	5.8 [.23]	10.4 [.41]	3/4	
5217X6X6	259-2021-6-6	3/8-18	9/16-18	36.3 [1.43]	14.2 [.56]	14.7 [.58]	7.6 [.30]	10.4 [.41]	3/4	
5217X8	259-2021-6-8	3/8-18	3/4-16	38.9 [1.53]	16.8 [.66]	14.7 [.58]	9.9 [.39]	9.9 [.39]	13/16	
5217X10X6	259-2021-6-10	3/8-18	7/8-14	43.2 [1.70]	19.3 [.76]	14.7 [.58]	12.2 [.48]	10.4 [.41]	15/16	Ⓛ
	259-2021-8-4	1/2-14	7/16-20	42.7 [1.68]	14 [.55]	19.3 [.76]	4.3 [.17]	13.5 [.53]	7/8	
5217X6X8	259-2021-8-6	1/2-14	9/16-18	42.9 [1.69]	14.2 [.56]	19.3 [.76]	7.6 [.30]	13.5 [.53]	7/8	
5217X8X8	259-2021-8-8	1/2-14	3/4-16	45.5 [1.79]	16.8 [.66]	19.3 [.76]	9.9 [.39]	13.5 [.53]	7/8	
5217X10	259-2021-8-10	1/2-14	7/8-14	48 [1.89]	19.3 [.76]	19.3 [.76]	12.2 [.48]	12.2 [.48]	15/16	Ⓛ
5217X12X8	259-2021-8-12	1/2-14	1 1/16-12	52.3 [2.06]	21.8 [.86]	19.3 [.76]	13.5 [.53]	13.5 [.53]	1 1/8	
	259-2021-12-6	3/4-14	9/16-18	44.5 [1.75]	14.2 [.56]	19.3 [.76]	7.6 [.30]	18.3 [.72]	1 1/8	
5217X8X12	259-2021-12-8	3/4-14	3/4-16	47 [1.85]	16.8 [.66]	19.3 [.76]	9.9 [.39]	18.3 [.72]	1 1/8	Ⓛ
5217X10X12	259-2021-12-10	3/4-14	7/8-14	49.5 [1.95]	19.3 [.76]	19.3 [.76]	12.2 [.48]	18.3 [.72]	1 1/8	Ⓛ
5217X12	259-2021-12-12	3/4-14	1 1/16-12	52.3 [2.06]	21.8 [.86]	19.3 [.76]	15.5 [.61]	18.3 [.72]	1 1/8	
5217X16X12	259-2021-12-16	3/4-14	1 5/16-12	53.6 [2.11]	23.1 [.91]	19.3 [.76]	21.3 [.84]	18.3 [.72]	1 3/8	Ⓛ
5217X16	259-2021-16-16	1-11 1/2	1 5/16-12	58.4 [2.30]	23.1 [.91]	24.4 [.96]	21.3 [.84]	21.3 [.84]	1 3/8	
	259-2021-16-20	1-11 1/2	1 5/8-12	61.5 [2.42]	24.4 [.96]	24.4 [.96]	23.9 [.94]	23.9 [.94]	1 11/16	
	259-2021-20-16	1 1/4-11 1/2	1 5/16-12	61 [2.40]	23.1 [.91]	24.9 [.98]	21.3 [.84]	31.8 [1.25]	1 11/16	
5217X20	259-2021-20-20	1 1/4-11 1/2	1 5/8-12	62.2 [2.45]	24.4 [.96]	24.9 [.98]	27.4 [1.08]	31.8 [1.25]	1 11/16	Ⓛ
5217X24X20	259-2021-20-24	1 1/4-11 1/2	1 7/8-12	67.3 [2.65]	27.4 [1.08]	24.9 [.98]	31.8 [1.25]	31.8 [1.25]	2	Ⓛ
5217X24	259-2021-24-24	1 1/2-11 1/2	1 7/8-12	68.1 [2.68]	27.4 [1.08]	25.9 [1.02]	33.3 [1.31]	33.3 [1.31]	2	Ⓛ
	259-2021-32-32	2-11 1/2	2 1/2-12	79 [3.11]	33.8 [1.33]	26.4 [1.04]	45.2 [1.78]	45.2 [1.78]	2 5/8	

REVISIONS			
REV	DESCRIPTION	DATE	APPROVED
D	REDRAWN, UPDATED TO EATON FORMAT 1) ADDED WEATHERHEAD PART NUMBERS 2) ADDED PART 259-2021-2-2.	2010-09-03 AJC/AGV	0046353-ECO DP-1299
E	1) ADDED WEATHERHEAD PART NUMBERS	2012-06-25 RDZ/PSW	0072345-ECO



DWG. NO. 259-2021

- DIMENSIONS ARE IN MILLIMETERS [INCHES].
- MATERIAL: AISI 316 STAINLESS STEEL.

DRAWN A. CHAVAN	EATON	INDUSTRIAL SECTOR
CHECKED A. VARANKAR		HYDRAULICS GROUP, FLUID CONVEYANCE PRODUCTS, MAUMEE, OHIO U.S.A.
APPROVED J. SNYDER	DRAWING TITLE ADAPTER	
RELEASE DATE 2010-09-03	SAE 37° FLARE - MALE CONNECTOR (SAE #070102)	
0046353-ECO	SIZE A1	DRAWING NUMBER 259-2021
DP-1299	SCALE NONE	REV E
THIRD ANGLE PROJECTION	DIST U	CAGE CODE 01276
		SHEET 1

CONFIDENTIAL AND PROPRIETARY NOTICE TO PERSONS RECEIVING THIS DRAWING AND/OR TECHNICAL INFORMATION