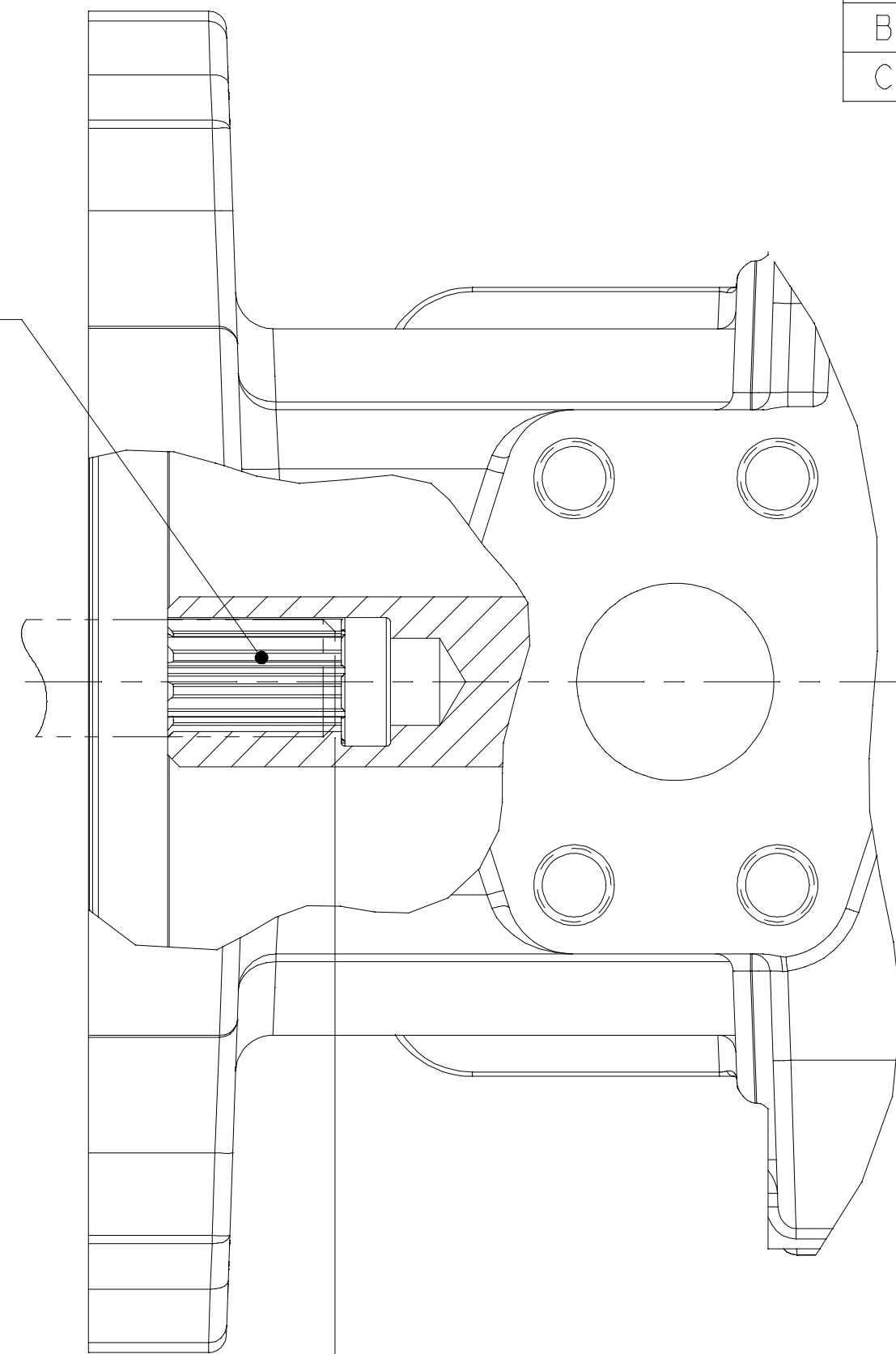


REV	DESCRIPTION	BY	CHK	DATE	ECN / MPS
A	RELEASE FOR SAMPLES AND ESTIMATES	JMM	JMM	10-5-01	M26336
B	ENGINEERING RELEASE	MJP	MJP	10-18-02	42601
C	ADDED 300/[11.81] DIM	JMM	JMM	1-8-03	43159

Ø16.54 [1.651] 9 TOOTH 30° FLAT
ROOT SIDE FIT 16/32 CLASS 5
INTERNAL SPLINE PER ANSI B92.1

ACCEPTS 9 TOOTH 30° FLAT ROOT
SIDE FIT 16/32 EXTERNAL SPLINES
PER SAE J498b CLASS 1 OR ANSI
B92.1 CLASS 5 WITH 31.8 [1.25]
EXTENSION FROM MOUNTING FLANGE

ADDITIONAL UNITS DRIVEN BY
THIS SPLINE MUST NOT
REQUIRE MORE THAN 74.6 N·m
[55 lbf·ft] OF TORQUE



31.8
[1.25]

287.3
[11.31]

300
[11.81]
WITH DOUBLE
SHAFT SEAL

DISTRIBUTION CODE(S)

UNLESS OTHERWISE SPECIFIED ALL DIMENSIONS ARE IN INCHES <input type="checkbox"/> MILLIMETERS (INCHES) <input checked="" type="checkbox"/>	DRAWING BASED ON ANSI Y14.5M-1982	
	NOTICE TO PERSONS RECEIVING THIS DRAWING AND / OR TECHNICAL INFORMATION Eaton Corporation claims proprietary rights in the information disclosed hereon. This document is issued in confidence and is not to be reproduced or used to manufacture anything shown hereon without the written permission of the Eaton Corporation.	
TOLERANCES .X ± ---- .XX ± REF .XXX ± ONLY ∠ ± ----	DRAWN JMM BY/DATE 10-18-01	MATERIAL/HEAT TREAT
UNSPECIFIED RADII ARE: ----	CHECKED JMM BY/DATE 6-4-02	TITLE
UNSPECIFIED DRAFT ANGLES ARE: ----	ENGRG TJT BY/DATE 6-4-02	OUTPUT SHAFT INSTALLATION
	METALLURGY ---- BY/DATE	NUMBER A-2254-001
	THIRD ANGLE PROJECTION DO NOT SCALE	SCALE 1/1 SHEET 1 OF 1



Eaton Hydraulics, Inc.
14615 Lone Oak Road
Eden Prairie, Mn. 55344

MICROINCHES
MICROMETERS (MICROINCHES)
ARITHMETICAL AVERAGE