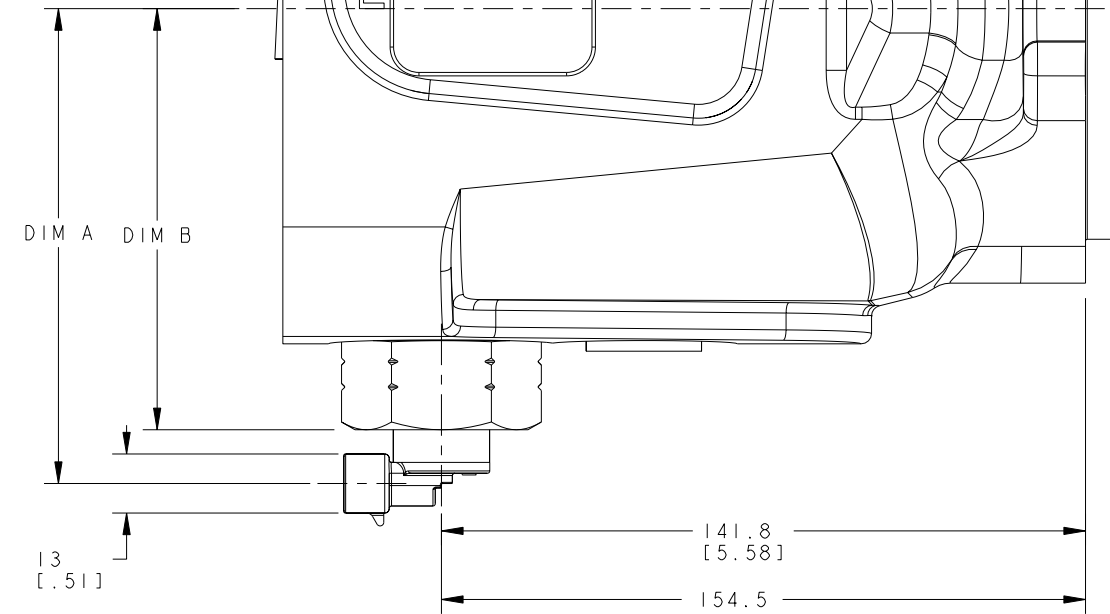
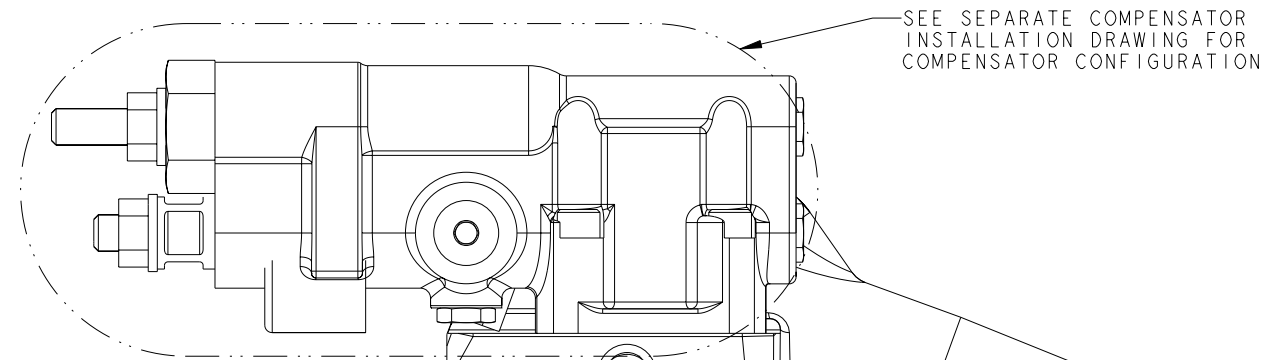
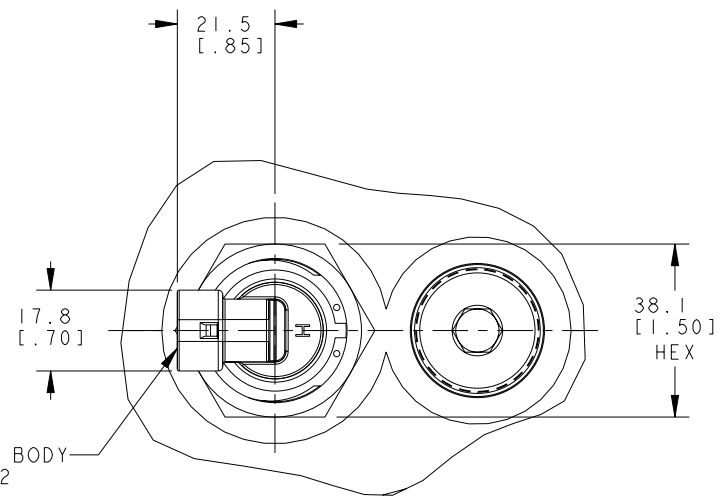


REV	DESCRIPTION	BY	CHK	DATE	ECN / MPS
A	ENGINEERING RELEASE	MKS	SDY	08-21-08	0021240



WITH DOUBLE SHAFT SEAL HOUSING

MATING CONNECTOR BODY  
PACKARD 1216 2192



VIEW A-A

REVIEWED FOR CLASSIFICATION PER ESP-042

-
DISTRIBUTION CODE(S)

80 [4.88]	110.2 [4.34]	98.9 [3.89]
62.3 [3.80]	107.8 [4.24]	96.5 [3.80]
49.2 [3.00]	104 [4.10]	92.7 [3.65]
41 [2.50]	103.2 [4.06]	91.9 [3.62]
PUMP DISP	DIM A	DIM B

UNLESS OTHERWISE SPECIFIED ALL DIMENSIONS ARE IN INCHES <input type="checkbox"/> MILLIMETERS (INCHES) <input checked="" type="checkbox"/>		DRAWING BASED ON ANSI Y14.5M-1982	
TOLERANCES .X ± --- .XX ± REF .XXX ± ONLY ∠ ± ---		NOTICE TO PERSONS RECEIVING THIS DRAWING AND / OR TECHNICAL INFORMATION Eaton Corporation claims proprietary rights in the information disclosed hereon. This document is issued in confidence and is not to be reproduced or used to manufacture anything shown hereon without the written permission of the Eaton Corporation.	
UNSPECIFIED RADII ARE: ----		DRAWN MKS BY/DATE 08-21-08	MATERIAL/HEAT TREAT
UNSPECIFIED DRAFT ANGLES ARE: ----		CHECKED SDY BY/DATE 08-21-08	Eaton Hydraulics, Inc. 14615 Lone Oak Road Eaton Froidre, Mo. 5544
THIRD ANGLE PROJECTION DO NOT SCALE		ENGRG DJJ BY/DATE 08-21-08	TITLE 420 PUMP SPEED SENSOR INSTALL
MICROINCHES <input type="checkbox"/> MICROMETERS (MICROINCHES) <input checked="" type="checkbox"/>		METALLURGY BY/DATE	NUMBER A-3302-001
ARITHMETICAL AVERAGE <input checked="" type="checkbox"/>		SCALE 1/1	SHEET 1 OF 1