

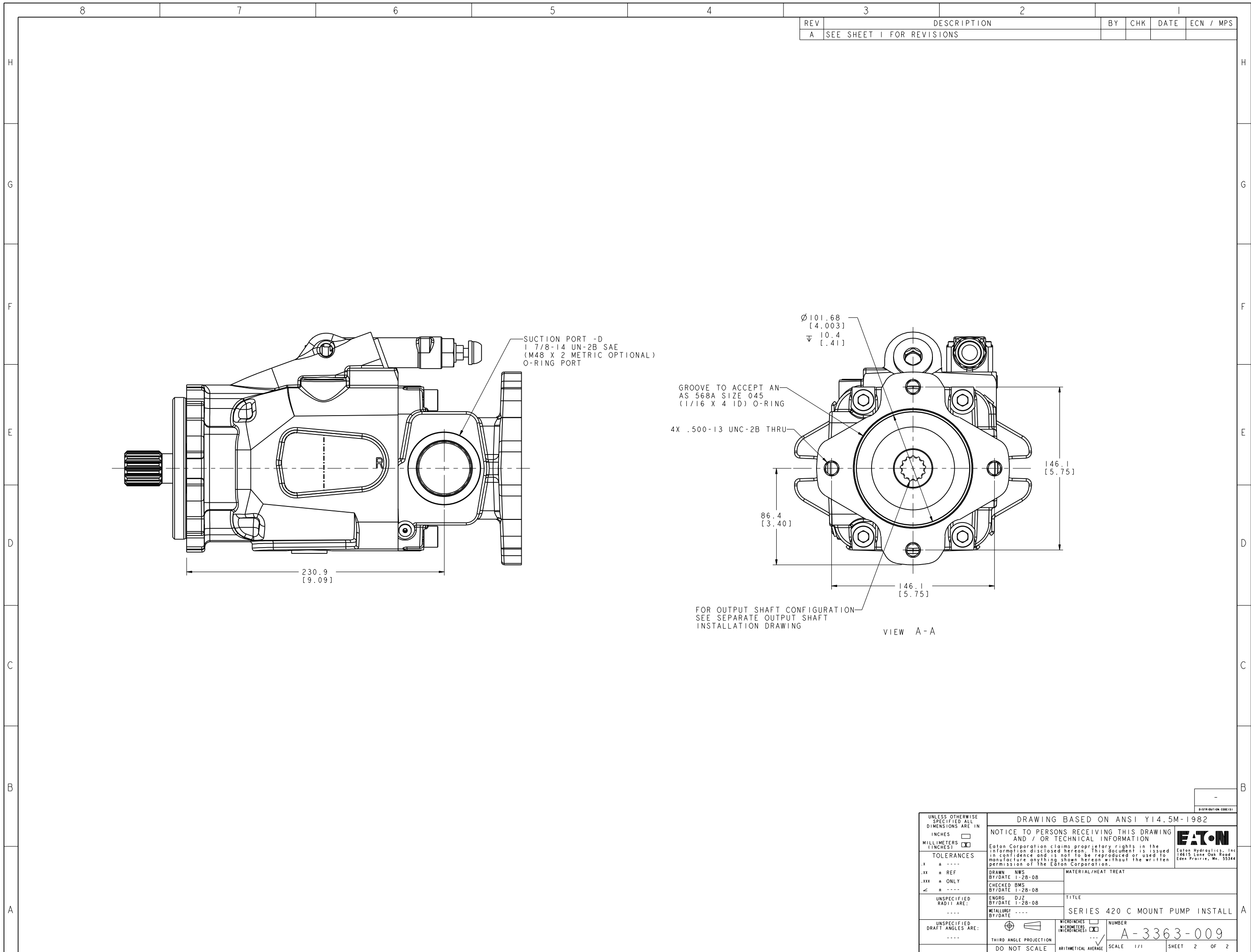
REV	DESCRIPTION	BY	CHK	DATE	ECN / MPS
A	ENGINEERING RELEASE	NWS	BMS	5-28-08	0018094

NOTE

1 UNIT MUST BE INSTALLED IN SUCH A POSITION THAT THE CASE DRAIN ASSURES AN OIL LEVEL AT OR ABOVE UNIT CENTERLINE BEFORE STARTING

REVIEWED FOR CLASSIFICATION PER ESP-042

UNLESS OTHERWISE SPECIFIED ALL DIMENSIONS ARE IN INCHES		DRAWING BASED ON ANSI Y14.5M-1982	
MILLIMETERS (INCHES)		NOTICE TO PERSONS RECEIVING THIS DRAWING AND / OR TECHNICAL INFORMATION	
TOLERANCES		Eaton Corporation claims proprietary rights in the information disclosed herein. This document is issued in confidence and is not to be reproduced or used to manufacture anything shown herein without the written permission of the Eaton Corporation.	
.XX ± .000	DRAWN NWS	Eaton Hydrolytics, Inc. 14615 Lone Oak Road, Evan, Prairie, Mo. 65044	
.XXX ± .001	BY/DATE 1-28-08	MATERIAL/HEAT TREAT	
< ± .000	CHECKED BMS	TITLE	
UNSPECIFIED RADII ARE:	BY/DATE 1-28-08	SERIES 420 C MOUNT PUMP INSTALL	
---	ENGRG DJZ	NUMBER	
---	BY/DATE	A-3363-009	
UNSPECIFIED DRAFT ANGLES ARE:	METALLURGY	SCALE 1/1	
---	BY/DATE	SHEET 1 OF 2	
E SIZE	THIRD ANGLE PROJECTION	ARITHMETICAL AVERAGE	
	DO NOT SCALE		



REV	DESCRIPTION	BY	CHK	DATE	ECN / MPS
A	SEE SHEET 1 FOR REVISIONS				

SUCTION PORT -D
 1 7/8-14 UN-2B SAE
 (M48 X 2 METRIC OPTIONAL)
 O-RING PORT

GROOVE TO ACCEPT AN
 AS 568A SIZE O45
 (1/16 X 4 ID) O-RING

4X .500-13 UNC-2B THRU

Ø101.68
 [4.003]
 ▽10.4
 [.41]

86.4
 [3.40]

146.1
 [5.75]

146.1
 [5.75]

FOR OUTPUT SHAFT CONFIGURATION
 SEE SEPARATE OUTPUT SHAFT
 INSTALLATION DRAWING

VIEW A-A

230.9
 [9.09]

UNLESS OTHERWISE SPECIFIED ALL DIMENSIONS ARE IN		DRAWING BASED ON ANSI Y14.5M-1982	
INCHES <input type="checkbox"/>		NOTICE TO PERSONS RECEIVING THIS DRAWING AND / OR TECHNICAL INFORMATION	
MILLIMETERS <input checked="" type="checkbox"/>		Eaton Corporation claims proprietary rights in the information disclosed herein. This document is issued in confidence and is not to be reproduced or used to manufacture anything shown herein without the written permission of the Eaton Corporation.	
TOLERANCES		Eaton Hydrolics, Inc. 14615 Lone Oak Road, Coraopolis, Pa. 15104	
.X ± ----	DRAWN NWS	MATERIAL/HEAT TREAT	
.XX ± REF	BY/DATE 1-28-08		
.XXX ± ONLY	CHECKED BMS	TITLE	
< ± ----	BY/DATE 1-28-08	SERIES 420 C MOUNT PUMP INSTALL	
UNSPECIFIED RADII ARE:	ENGRG DJZ	NUMBER	
----	BY/DATE 1-28-08	A-3363-009	
UNSPECIFIED DRAFT ANGLES ARE:	METALLURGY ----	SCALE 1/1	
----	BY/DATE	SHEET 2 OF 2	
	THIRD ANGLE PROJECTION	ARITHMETICAL AVERAGE	
	DO NOT SCALE		