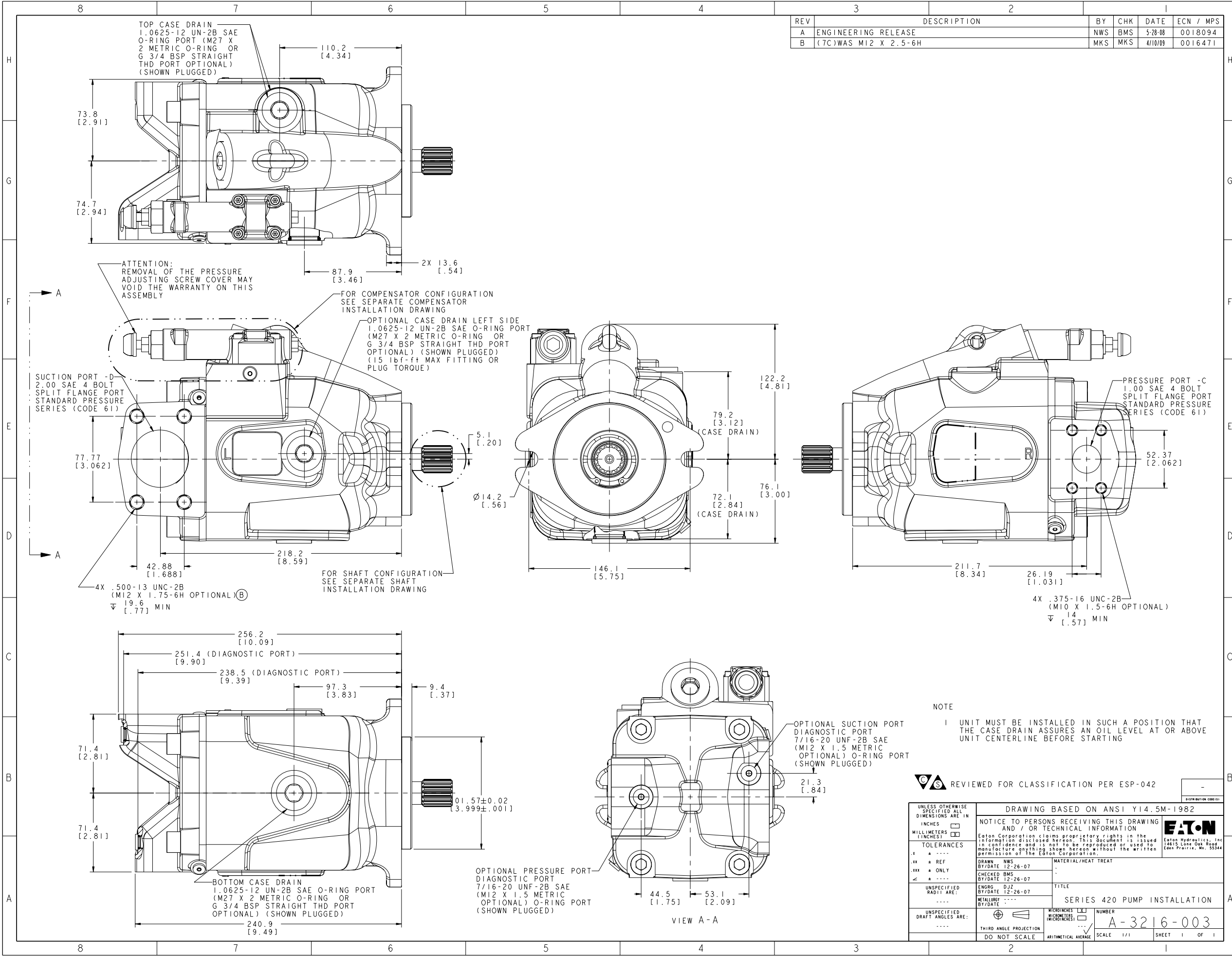


REV	DESCRIPTION	BY	CHK	DATE	ECN / MPS
A	ENGINEERING RELEASE	NWS	BMS	5-28-08	0018094
B	(7C)WAS M12 X 2.5-6H	MKS	MKS	4/10/09	0016471



REVIEWED FOR CLASSIFICATION PER ESP-042

UNLESS OTHERWISE SPECIFIED ALL DIMENSIONS ARE IN INCHES		DRAWING BASED ON ANSI Y14.5M-1982	
MILLIMETERS (INCHES)		NOTICE TO PERSONS RECEIVING THIS DRAWING AND / OR TECHNICAL INFORMATION	
TOLERANCES		Eaton Corporation claims proprietary rights in the information disclosed hereon. This document is issued in confidence and is not to be reproduced or used to manufacture anything shown hereon without the written permission of the Eaton Corporation.	
.1	± .005	DRAWN	NWS
.2	± .005	BY/DATE	12-26-07
.3	± .005	CHECKED	BMS
.4	± .005	BY/DATE	12-26-07
UNSPECIFIED	± .012	ENGRG	DJZ
RADII ARE:	± .012	BY/DATE	12-26-07
UNSPECIFIED	± .012	METALLURGY	----
DRAFT ANGLES ARE:	----	BY/DATE	----
THIRD ANGLE PROJECTION	DO NOT SCALE	TITLE	
MICROMETERS (MICROMETERS)		SERIES 420 PUMP INSTALLATION	
ARITHMETICAL AVERAGE		NUMBER	
SCALE 1/1		A-3216-003	
SHEET 1 OF 1			