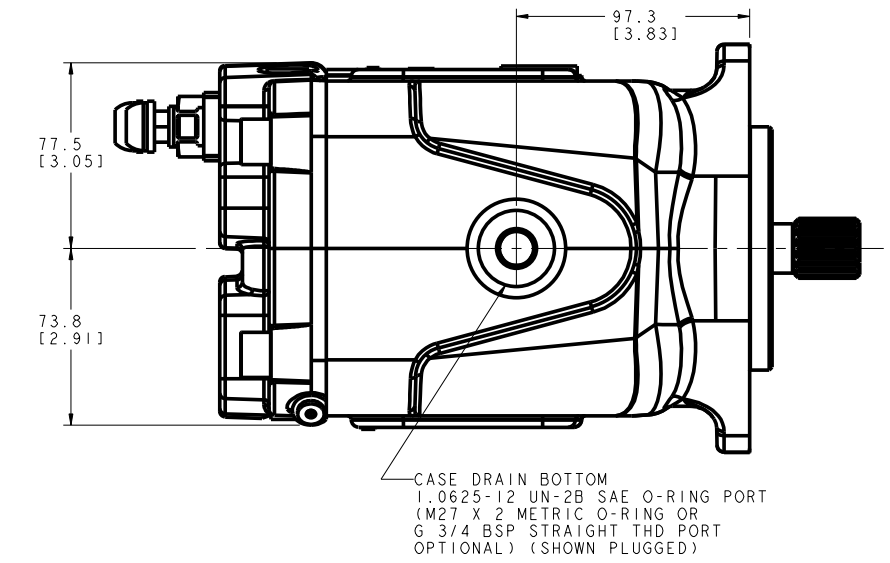
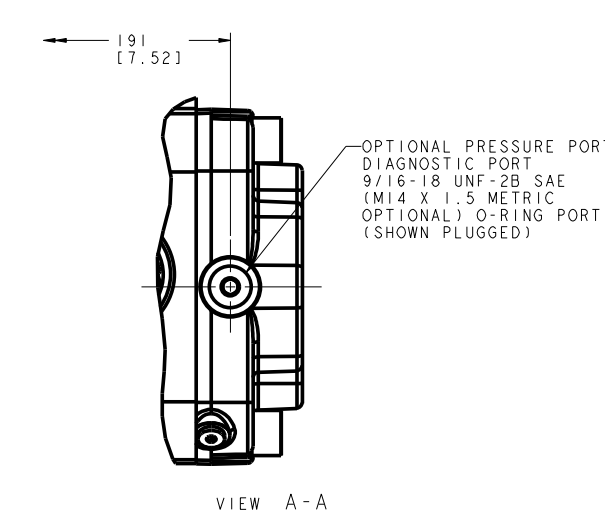
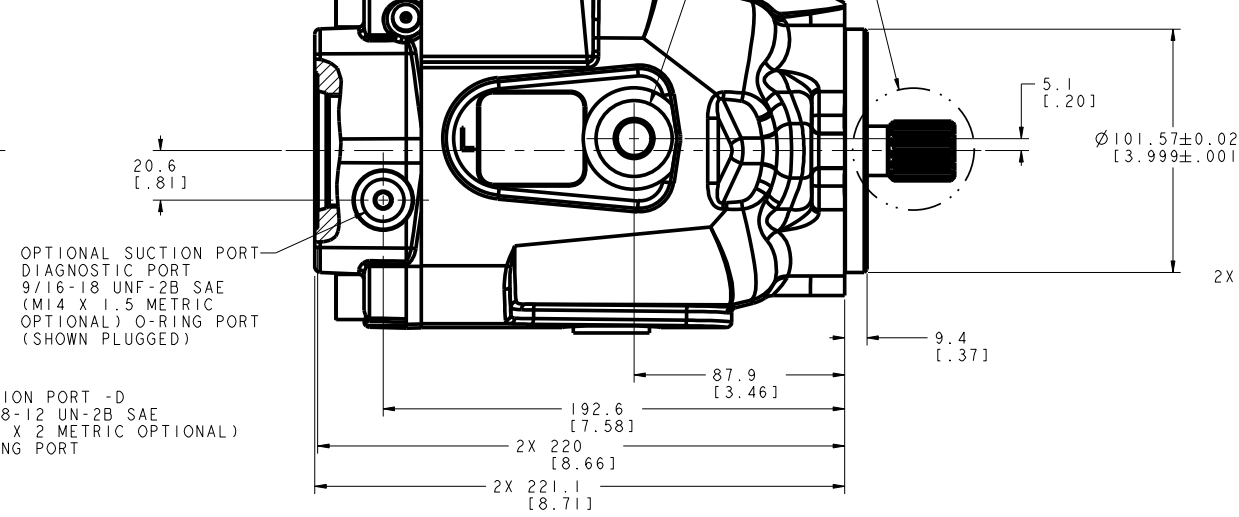
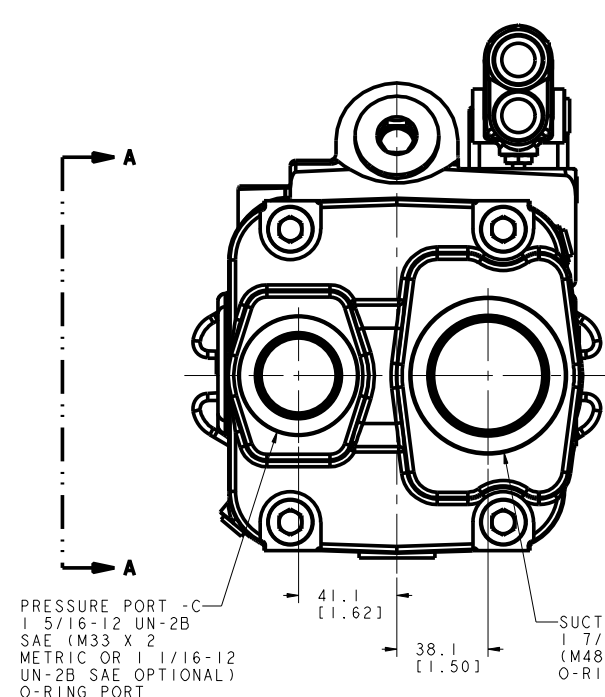
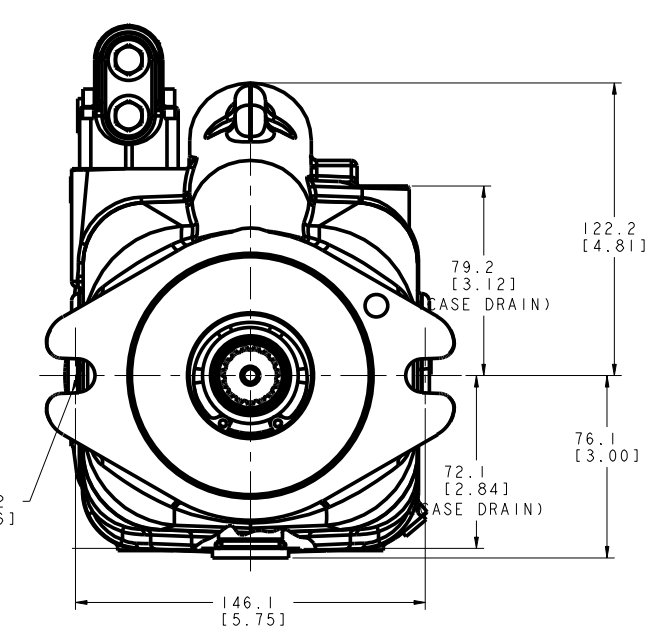
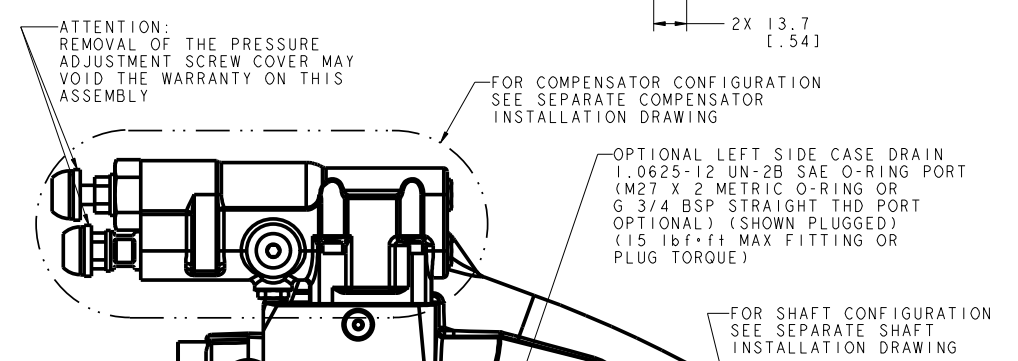
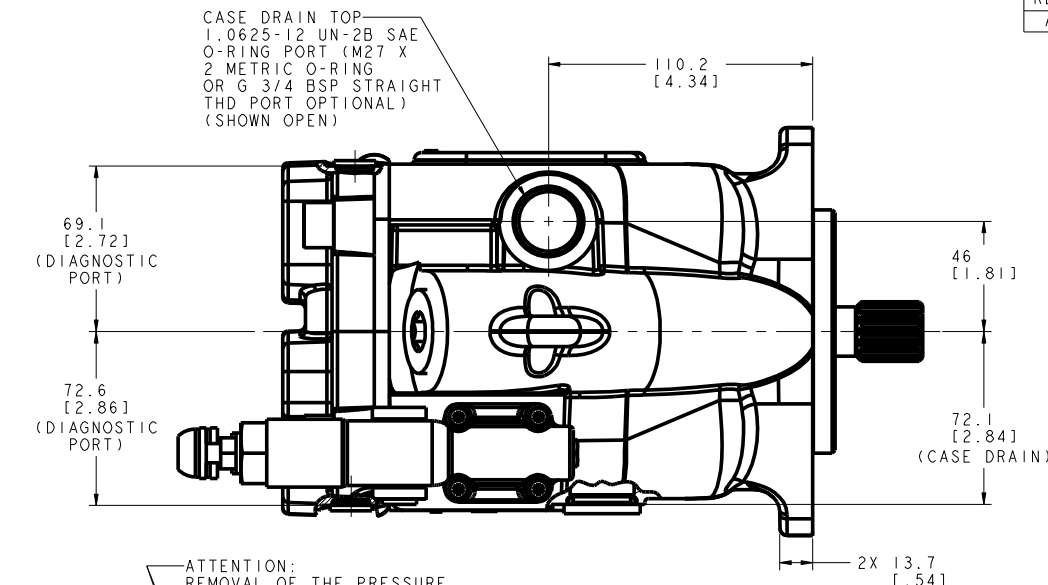


REV	DESCRIPTION	BY	CHK	DATE	ECN / MPS
A	ENGINEERING RELEASE	NWS	BMS	05-28-08	0018094



NOTE
1 UNIT MUST BE INSTALLED IN SUCH A POSITION THAT
THE CASE DRAIN ASSURES AN OIL LEVEL AT OR ABOVE
UNIT CENTER LINE BEFORE STARTING

REVIEWED FOR CLASSIFICATION PER ESP-042

DRAWING BASED ON ANSI Y14.5M-1982

UNLESS OTHERWISE SPECIFIED ALL DIMENSIONS ARE IN INCHES [MILLIMETERS (INCHES)]

TOLERANCES
 .X ± .005
 .XX ± .002
 .XXX ± .001
 UNSPECIFIED RADII ARE: .005
 UNSPECIFIED DRAFT ANGLES ARE: 1:4

NOTICE TO PERSONS RECEIVING THIS DRAWING AND / OR TECHNICAL INFORMATION
 Eaton Corporation claims proprietary rights in the information disclosed hereon. This document is issued in confidence and is not to be reproduced or used to manufacture anything shown hereon without the written permission of the Eaton Corporation.

Eaton
 Eaton Hydraulics, Inc.
 14615 Lone Oak Road
 Eden Prairie, Mn. 55344

DRAWN NWS BY/DATE 12-27-07
 CHECKED BMS BY/DATE 12-27-07
 ENGRG DJZ BY/DATE 12-27-07
 METALLURGY BY/DATE

MATERIAL/HEAT TREAT
 TITLE
 SERIES 420 PUMP INSTALLATION

NUMBER
 A-3215-005
 SCALE 1/1
 SHEET 1 OF 1