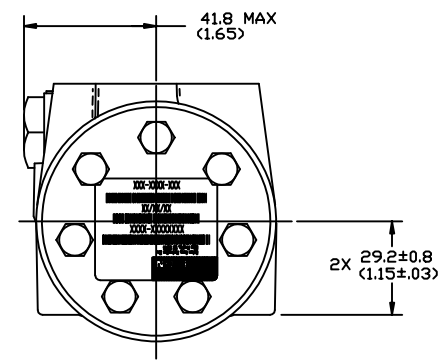
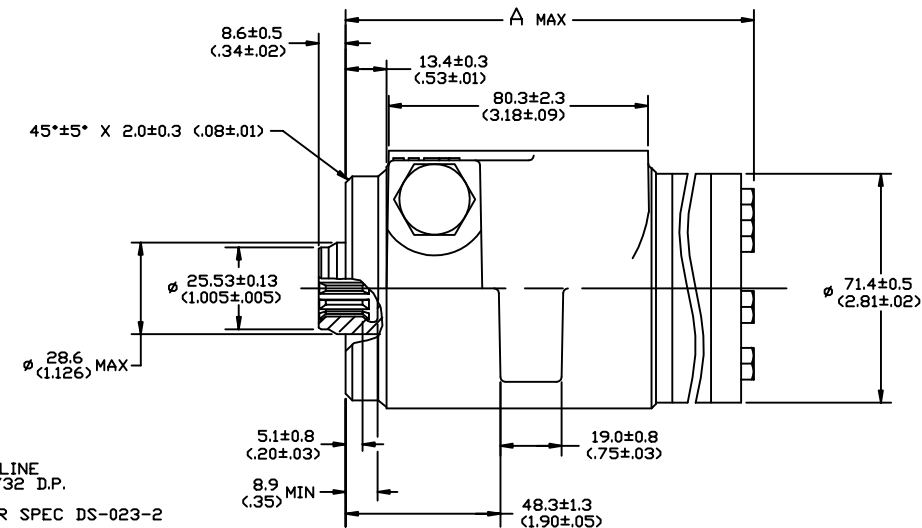
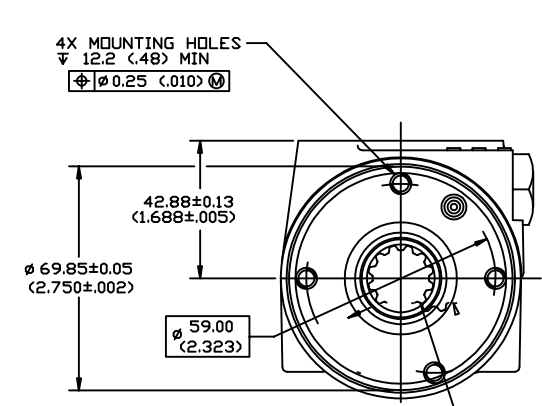
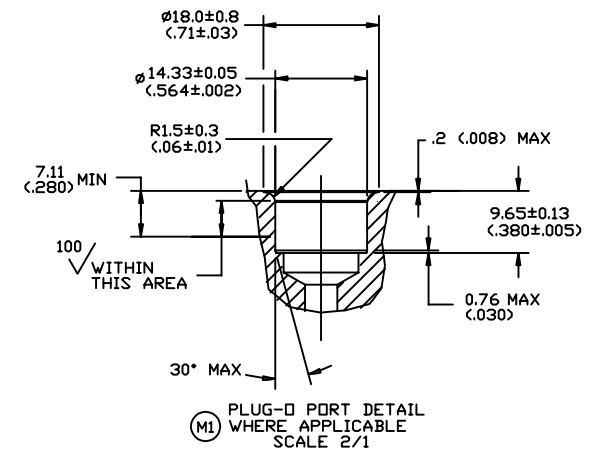
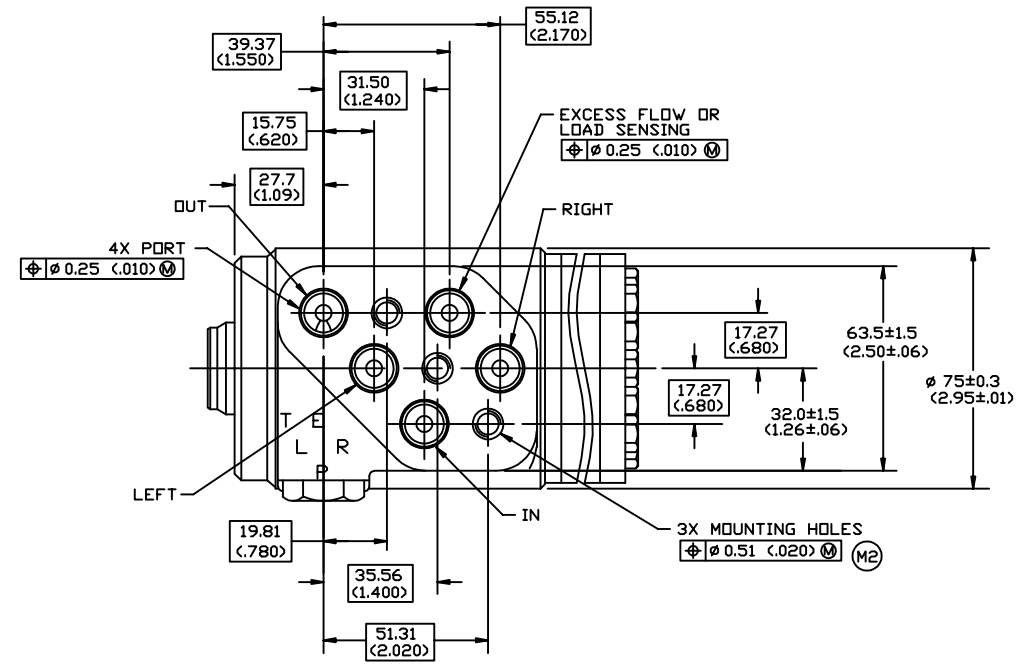


DISPLACEMENT		A MAX
CODE	cm3/r (in3/r)	
35	31.5 (1.92)	123.4 (4.86)
37	39.5 (2.41)	125.2 (4.93)
39	50.8 (3.10)	124.2 (4.89)
41	63.1 (3.85)	126.2 (4.97)
43	73.8 (4.50)	128 (5.04)
46	100 (6.10)	132.3 (5.21)
48	120.0 (7.33)	135.4 (5.33)

SYM	REVISION	BY	DATE	ECN
A	ENGINEERING RELEASE	DGS	3-4-91	20209
E	REVISED	LMD	4-28-93	23942
F	(8D) ADD DISPL CODES 35, 37, AND 48	LK	11-23-93	24852
G	-1X(3C) 32.0±1.5 (1.26±0.06) WAS 32.0±0.5 (1.26±0.03) -2X(3D) 63.5±1.5 (2.50±0.06) WAS 63.5±0.8 (2.50±0.03)	JSH	11-15-94	26199
H	(7B) PICTORIAL CHANGE TO LEFT END VIEW	JSH	5-3-95	26847
J	-1X(4D) REMOVED OLD NAMEPLATE -2) ADDED NEW NAMEPLATE	LMD	5-4-99	32543
K	(5B) PICTORIAL CHANGE TO SPOOL END	AH	12/21/01	39440
L	REVISED SEE ECD	KRD	07/22/10	M78877-1
M	-1X(2C) ADDED 'WHERE APPLICABLE' -2X(3C) REMOVED 'SEE TAB A' FROM PORT CALLOUT	SVJ	12/18/12	0079669



MRSG

UNLESS OTHERWISE SPECIFIED ALL DIMENSIONS ARE IN: INCHES <input type="checkbox"/> MILLIMETERS <input checked="" type="checkbox"/> DECIMALS <input checked="" type="checkbox"/>	DRAWING BASED ON ANSI Y14.5M-1982	
TOLERANCES: X ± --- XX ± --- < ---	NOTICE TO PERSONS RECEIVING THIS DRAWING AND / OR TECHNICAL INFORMATION Eaton Corporation claims proprietary rights in the information disclosed herein. This document is issued in confidence and is not to be reproduced or used to manufacture anything shown herein without the written permission of the Eaton Corporation.	
UNSPECIFIED RADI ARE --- METALLURGY --- BY/DATE ---	DRAWN BY/DATE DGS 2-13-91 CHECKED BY/DATE KQ 6-20-91 ENGR BY/DATE TAH 6-24-91	MATERIAL/HEAT TREAT TITLE MINI SCU INSTALLATION
UNSPECIFIED DRAFT ANGLES ARE --- DRAWING FORMAT CARD (B) MANUAL <input type="checkbox"/>	THIRD ANGLE PROJECTION DO NOT SCALE	REVISIONS NO. BY/DATE DESCRIPTION A-274-000 SCALE 1/1 SHEET 1 OF 1