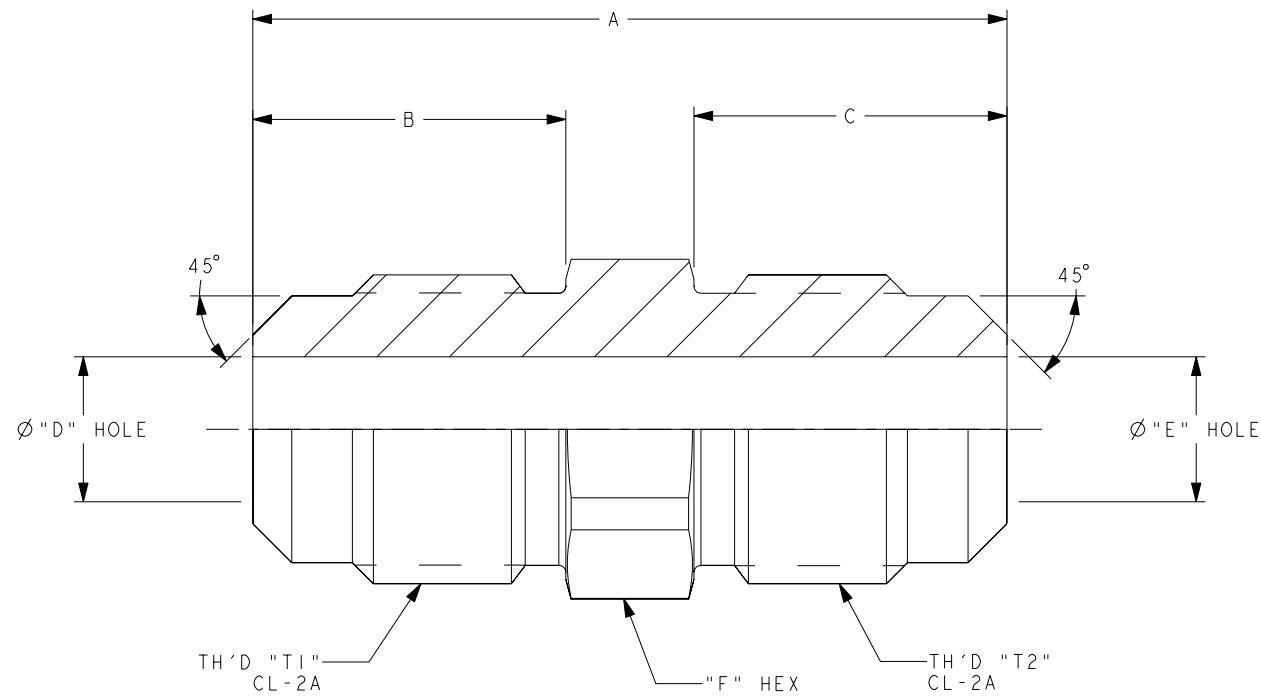


AEROQUIP PART NO	WHD PART NO	TH'D "T1"	TH'D "T2"	A REF	B REF	C REF	D REF	E REF	F
2060-2-2B	42X2	5/16-24	5/16-24	23.4 [.92]	9.7 [.38]	9.7 [.38]	2 [.08]	2 [.08]	5/16
2060-3-3B	42X3	3/8-24	3/8-24	26.9 [1.06]	11.2 [.44]	11.2 [.44]	3.1 [.12]	3.1 [.12]	3/8
2060-4-4B	42X4	7/16-20	7/16-20	30.2 [1.19]	12.7 [.50]	12.7 [.50]	4.8 [.19]	4.8 [.19]	7/16
2060-5-5B	42X5	1/2-20	1/2-20	34 [1.34]	14.2 [.56]	14.2 [.56]	5.6 [.22]	5.6 [.22]	1/2
2060-6-6B	42X6	5/8-18	5/8-18	38.1 [1.50]	15.7 [.62]	15.7 [.62]	7.1 [.28]	7.1 [.28]	5/8
2060-8-8B	42X8	3/4-16	3/4-16	46 [1.81]	19 [.75]	19 [.75]	10.4 [.41]	10.4 [.41]	3/4
2060-10-10B	42X10	7/8-14	7/8-14	53.8 [2.12]	22.4 [.88]	22.4 [.88]	12.7 [.50]	12.7 [.50]	7/8
2060-12-12B	42X12	1 1/16-14	1 1/16-14	62 [2.44]	25.4 [1.00]	25.4 [1.00]	16 [.63]	16 [.63]	1 1/16

REVISIONS			
REV	DESCRIPTION	DATE	APPROVED
F	REDRAWN AND REDESIGNED UPDATED TO EATON FORMAT AND DIMENSION STYLE 1) ADDED WHD PART 2) ADDED PART NO #2060-2-2B 3) ADDED PART NO #2060-3-3B	2011-07-19 NUD/SRH	0057865-ECO



(F1)

REV. F
SH. 1
2060
DWG. NO.

METRIC

2. MATERIAL BRASS.

1. DIMENSIONS ARE IN MILLIMETERS [INCHES].

DRAWN N. DHUMAL		EATON INDUSTRIAL SECTOR HYDRAULICS GROUP, FLUID CONVEYANCE PRODUCTS, MAUMEE, OHIO U.S.A.
CHECKED S. HASABE		
APPROVED Y. KULKARNI		DRAWING TITLE
RELEASE DATE 2011-07-19		ADAPTER
0057865-ECO		SAE 45° MALE FLARE UNION (SAE #010101)
THIRD ANGLE PROJECTION	SIZE A2	DRAWING NUMBER 2060
	SCALE 3/1	REV F
	DIST U	CAGE CODE 01276
		SHEET 1

CONFIDENTIAL AND PROPRIETARY NOTICE TO PERSONS RECEIVING THIS DRAWING AND/OR TECHNICAL INFORMATION: THIS DOCUMENT, INCLUDING THE DRAWING AND INFORMATION CONTAINED THEREON, IS CONFIDENTIAL AND IS THE EXCLUSIVE PROPERTY OF EATON CORPORATION. IT IS TO BE KEPT IN CONFIDENTIALITY AND IS NOT TO BE DISCLOSED OR REPRODUCED IN ANY MANNER WITHOUT THE WRITTEN CONSENT OF EATON. IN THE EVENT OF A DISCLOSEURE OR REPRODUCTION, THE RECIPIENT SHALL BE RESPONSIBLE FOR THE PROTECTION OF THIS DOCUMENT. © 2008 Eaton Corporation - All Rights Reserved.