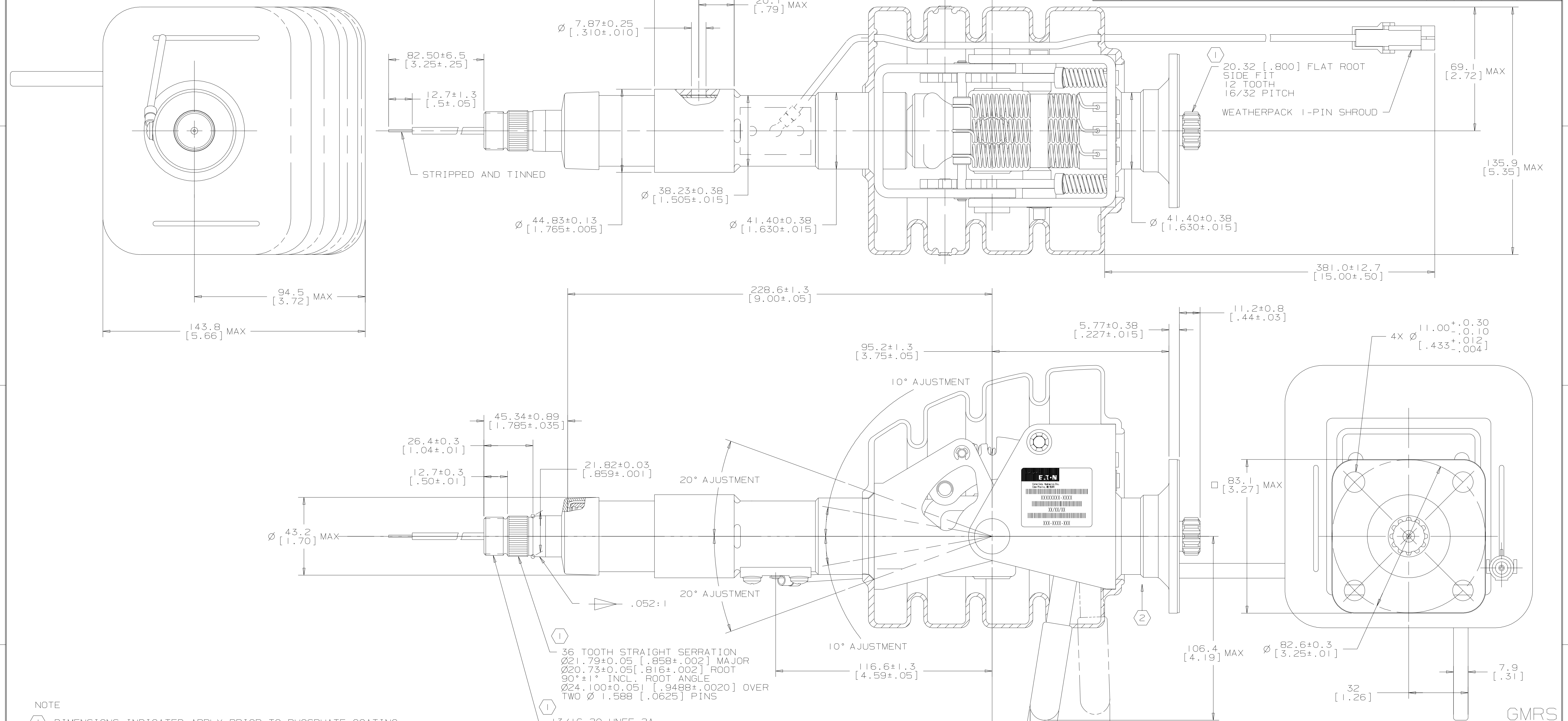


REV	DESCRIPTION	BY	CHK	DATE	ECN
A	ENGINEERING RELEASE	LMD		9-3-99	M22119
B	REVISED	DMK	DMK	2-22-00	35875
C	REVISED	DMK	DMK	6-27-00	M22119A
D	ADDED NAME PLATE	CEA	CEA	7-11-00	36335



- NOTE
- ① DIMENSIONS INDICATED APPLY PRIOR TO PHOSPHATE COATING
  - ② RATED BENDING MOMENT CALCULATED ABOUT POINT INDICATED OR ABOUT CENTERLINE OF UPPER COLUMN SUPPORT IS 136 N·m [100 lb·ft]
- LEVER ARM FOR THIS CALCULATION SHALL BE THE DISTANCE FROM POINT INDICATED TO CENTERLINE OF RADIAL LOAD
- COLUMNS LONGER THAN 161.8 [6.37] REQUIRE COLUMN SUPPORT IF A RADIAL LOAD AT STEERING WHEEL RIM IS EXPECTED TO EXCEED 900 N [203 lb·ft]
- 3 RATED STEERING SHAFT TORQUE IS 81 N·m [60 lb·ft]
  - 4 RECOMMENDED STEERING WHEEL NUT TORQUE IS 47.5±6.5 N·m [35±5 lb·ft]

UNLESS OTHERWISE SPECIFIED ALL DIMENSIONS ARE IN		DRAWING BASED ON ANSI Y14.5M-1982	
INCHES	<input type="checkbox"/>	NOTICE TO PERSONS RECEIVING THIS DRAWING AND / OR TECHNICAL INFORMATION	
MILLIMETERS	<input checked="" type="checkbox"/>	Eaton Corporation claims proprietary rights in the information disclosed herein. This document is issued in confidence and is not to be reproduced or used to manufacture anything shown hereon without the written permission of the Eaton Corporation.	
TOLERANCES		EATON Eaton Corporation Hydraulic Division 1515 Highway 5 Eaton Prairie, Mo. 65544	
.XX	----	DRAWN BY/DATE LMD 10-25-99	MATERIAL/HEAT TREAT
.XXX	----	CHECKED BY/DATE DM 10-25-99	
<	----	UNSPECIFIED RADI ARE	ENG'D BY/DATE DM 11-9-99
		UNSPECIFIED DRAFT ANGLES ARE	METALLURGY BY/DATE
		THIRD ANGLE PROJECTION	TITLE
DRAWING FORMAT CAD <input checked="" type="checkbox"/> MANUAL <input type="checkbox"/>	DO NOT SCALE	THIRD ANGLE PROJECTION	TILT COLUMN INSTALLATION
		ARITHMETICAL AVERAGE	NUMBER
			204-4028-001
		SCALE 1/1	SHEET 1 OF 1

GMRS