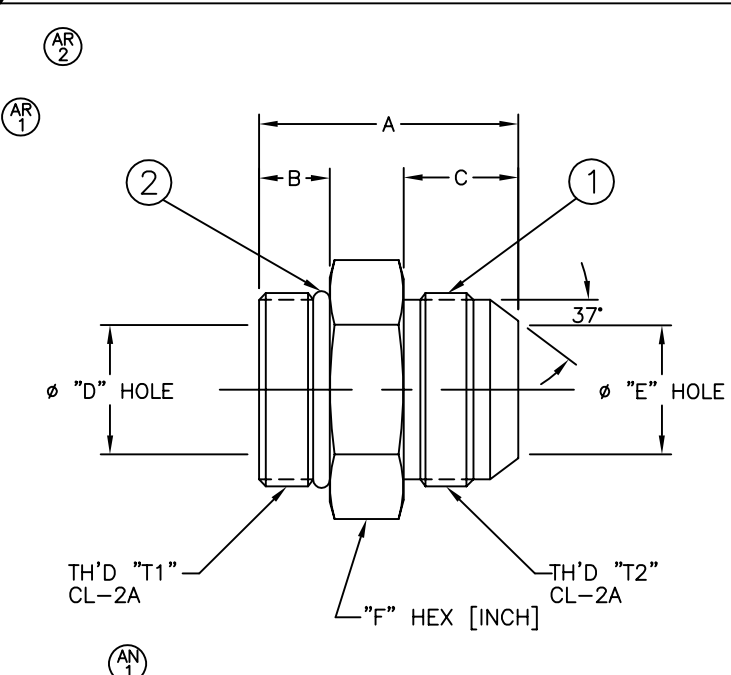


PART NUMBER	WHEATHERHEAD PART NUMBER	TH'D "T1"	TH'D "T2"	A REF	B REF	C REF	D REF	E REF	F REF
202702-12-10S	C5315X10X12	1 1/16-12	7/8-14	47.2 [1.86]	15 [.59]	19.3 [.76]	15.5 [.61]	12.2 [.48]	1 1/4
202702-12-12S	C5315X12	1 1/16-12	1 1/16-12	50 [1.97]	15 [.59]	21.8 [.86]	15.5 [.61]	15.5 [.61]	1 1/4
202702-12-14S	C5315X14X12	1 1/16-12	1 3/16-12	50.5 [1.99]	15 [.59]	22.6 [.89]	15.5 [.61]	18.3 [.72]	1 1/4
202702-12-16S	C5315X16X12	1 1/16-12	1 5/16-12	51.8 [2.04]	15 [.59]	23.1 [.91]	15.5 [.61]	21.3 [.84]	1 3/8
202702-12-20S	C5315X20X12	1 1/16-12	1 5/8-12	58.4 [2.30]	15 [.59]	24.4 [.96]	15.5 [.61]	27.4 [1.08]	1 11/16
202702-14-10S	C5315X10X14	1 3/16-12	7/8-14	47.2 [1.86]	15 [.59]	19.3 [.76]	18.3 [.72]	12.2 [.48]	1 3/8
202702-14-12S	C5315X12X14	1 3/16-12	1 1/16-12	49.8 [1.96]	15 [.59]	21.8 [.86]	18.3 [.72]	15.5 [.61]	1 3/8
202702-14-14S	C5315X14	1 3/16-12	1 3/16-12	50.5 [1.99]	15 [.59]	22.6 [.89]	18.3 [.72]	18.3 [.72]	1 3/8
202702-14-16S	C5315X16X14	1 3/16-12	1 5/16-12	51.8 [2.04]	15 [.59]	23.1 [.91]	18.3 [.72]	21.3 [.84]	1 3/8
202702-16-8S	C5315X8X16	1 5/16-12	3/4-16	45.5 [1.79]	15 [.59]	16.8 [.66]	21.3 [.84]	9.9 [.39]	1 1/2
202702-16-10S	C5315X10X16	1 5/16-12	7/8-14	48 [1.89]	15 [.59]	19.3 [.76]	21.3 [.84]	12.2 [.48]	1 1/2
202702-16-12S	C5315X12X16	1 5/16-12	1 1/16-12	50.5 [1.99]	15 [.59]	21.8 [.86]	21.3 [.84]	15.5 [.61]	1 1/2
202702-16-16S	C5315X16	1 5/16-12	1 5/16-12	51.8 [2.04]	15 [.59]	23.1 [.91]	21.3 [.84]	21.3 [.84]	1 1/2
202702-16-20S	C5315X20X16	1 5/16-12	1 5/8-12	59.2 [2.33]	15 [.59]	24.4 [.96]	21.3 [.84]	27.4 [1.08]	1 11/16
202702-20-12S	C5315X12X20	1 5/8-12	1 1/16-12	52.8 [2.08]	15 [.59]	21.8 [.86]	27.4 [1.08]	15.5 [.61]	1 7/8
202702-20-16S	C5315X16X20	1 5/8-12	1 5/16-12	53.8 [2.12]	15 [.59]	23.1 [.91]	27.4 [1.08]	21.3 [.84]	1 7/8
202702-20-20S	C5315X20	1 5/8-12	1 5/8-12	55.1 [2.17]	15 [.59]	24.4 [.96]	27.4 [1.08]	27.4 [1.08]	1 7/8
202702-20-24S	C5315X24X20	1 5/8-12	1 7/8-12	64.3 [2.53]	15 [.59]	27.4 [1.08]	27.4 [1.08]	33.3 [1.31]	2
202702-24-16S	C5315X16X24	1 7/8-12	1 5/16-12	55.9 [2.20]	15 [.59]	23.1 [.91]	33.3 [1.31]	21.3 [.84]	2 1/8
202702-24-20S	C5315X20X24	1 7/8-12	1 5/8-12	56.9 [2.24]	15 [.59]	24.4 [.96]	33.3 [1.31]	27.4 [1.08]	2 1/8
202702-24-24S	C5315X24	1 7/8-12	1 7/8-12	60.2 [2.37]	15 [.59]	27.4 [1.08]	33.3 [1.31]	33.3 [1.31]	2 1/8
202702-24-32S	C5315X32X24	1 7/8-12	2 1/2-12	74.7 [2.94]	15 [.59]	33.8 [1.33]	33.3 [1.31]	45.2 [1.78]	2 5/8
202702-32-24S	C5315X24X32	2 1/2-12	1 7/8-12	64.3 [2.53]	15 [.59]	27.4 [1.08]	45.2 [1.78]	33.3 [1.31]	2 3/4
202702-32-32S	C5315X32	2 1/2-12	2 1/2-12	70.6 [2.78]	15 [.59]	33.8 [1.33]	45.2 [1.78]	45.2 [1.78]	2 3/4



REVISIONS			
REV	DESCRIPTION	DATE	APPROVED
AN	REDRAWN, UPDATED TO LATEST EATON FORMAT. 1) ADDED PART # 202702-32-24S, 202702-24-32S & 202702-14-14S	2011-12-28 SBM/AGV	0065343-ECO DP-1299
AP	INACTIVATED "TAB 202702-12-10S"	2016-06-20 JEM/YKP	0070501
AR	1) REACTIVATED PART #202702-12-10S. 2) REMOVED TEXT "INACTIVE" FROM DRAWING.	2016-09-21 VSP	0127257-ECO

202702-32-32S	C5315X32	202701-32-32S	22617-32
202702-32-24S	C5315X24X32	202701-32-24S	22617-32
202702-24-32S	C5315X32X24	202701-24-32S	22617-24
202702-24-24S	C5315X24	202701-24-24S	22617-24
202702-24-20S	C5315X20X24	202701-24-20S	22617-24
202702-24-16S	C5315X16X24	202701-24-16S	22617-24
202702-20-24S	C5315X24X20	202701-20-24S	22617-20
202702-20-20S	C5315X20	202701-20-20S	22617-20
202702-20-16S	C5315X16X20	202701-20-16S	22617-20
202702-20-12S	C5315X12X20	202701-20-12S	22617-20
202702-16-20S	C5315X20X16	202701-16-20S	22617-16
202702-16-16S	C5315X16	202701-16-16S	22617-16
202702-16-12S	C5315X12X16	202701-16-12S	22617-16
202702-16-10S	C5315X10X16	202701-16-10S	22617-16
202702-16-8S	C5315X8X16	202701-16-8S	22617-16
202702-14-16S	C5315X16X14	202701-14-16S	22617-14
202702-14-14S	C5315X14	202701-14-14S	22617-14
202702-14-12S	C5315X12X14	202701-14-12S	22617-14
202702-14-10S	C5315X10X14	202701-14-10S	22617-14
202702-12-20S	C5315X20X12	202701-12-20S	22617-12
202702-12-16S	C5315X16X12	202701-12-16S	22617-12
202702-12-14S	C5315X14X12	202701-12-14S	22617-12
202702-12-12S	C5315X12	202701-12-12S	22617-12
202702-12-10S	C5315X10X12	202701-12-10S	22617-12

PART NUMBER	WEATHERHEAD PART NUMBER	① ADAPTER	② O-RING
-------------	-------------------------	-----------	----------

LIST OF MATERIALS

ITEM NO.	MATERIAL	DRAWN S. MERWADE	INDUSTRIAL SECTOR HYDRAULICS GROUP, FLUID CONVEYANCE PRODUCTS, MAUMEE, OHIO U.S.A.
1	STEEL	CHECKED A. VARANKAR	DRAWING TITLE ADAPTER SAE 37° FLARE-THREAD CONNECTOR SHORT (SAE #070120)
2	NITRILE(BUNA-N)	APPROVED J. SNYDER	
		RELEASE DATE 2011-12-28	SIZE A2
		0065343-ECO	DRAWING NUMBER 202702
		DP-1299	REV AR
		THIRD ANGLE PROJECTION	SCALE NONE
			DIST U
			CAGE CODE 01276
			SHEET 2

METRIC

1. DIMENSIONS ARE IN MILLIMETERS [INCHES].

EATON CORPORATION - CONFIDENTIAL AND PROPRIETARY NOTICE TO PERSONS RECEIVING THIS DOCUMENT AND/OR TECHNICAL INFORMATION... 2009 Eaton Corporation - All Rights Reserved.