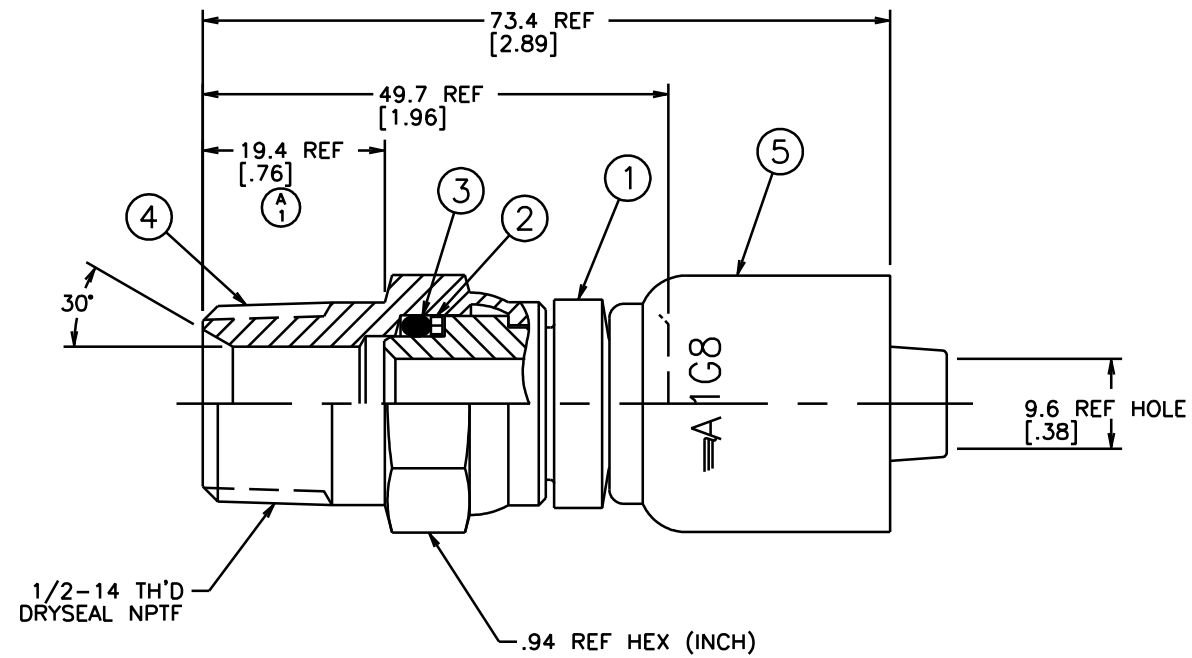


REVISIONS			
REV	DESCRIPTION	DATE	APPROVED
A	REDRAWN - SUPERSEDES 1GA_PS_ REV. NONE FOR 1GA8PS8 (1) WAS 19 REF	12-19-95	EN-F16133 DP-24900
B	(1) NOTE #1(a) WAS "ASSEMBLE NUT PER ACES 1831 AND 100% INSPECT TO INSURE NUT SWIVELS." (2) ADDED NOTE #3.	2000-03-21	EN-F19797 DP-1299 R.D.G.



METRIC

DWG. NO. 1GA8PS8 REV. B SH.

ITEM NO.	MATERIAL	1GA8PS8	1F40005-0808-S	22049-113	22550-113	221033-8-8S	1G8
		① NIPPLE	② BACK-UP RING	③ O'RING	④ NUT	⑤ SOCKET	
LIST OF MATERIALS							
1	STEEL	DRAWN R.D.GARRETT					
2	TEFLON	CHECKED M.MOLINA					
3	NITRILE (BUNA-N)	APPROVED R.D.GARRETT					
4	STEEL	RELEASE DATE 12-21-95					
5	STEEL	EN-F16133 DP-24900					
		THIRD ANGLE PROJECTION		DRAWING TITLE		REV	
		ITEM TYPE EBPA		FITTING ASSEMBLY MALE PIPE SWIVEL, OTC		B	
		SCALE 2/1		DRAWING NUMBER 1GA8PS8		CAGE CODE 01276 SHEET NO	

- 3. DIMENSIONS ARE IN MILLIMETERS [INCHES]. (B 2)
- 2. 1SA8PS8 NIPPLE ASSEMBLY MAY BE SUBSTITUTED FOR ITEMS #1, #2, #3 AND #4.
- 1. PROCESS AS FOLLOWS:
 - (a) ASSEMBLE NUT PER ACES 2409P5 AND 100% INSPECT TO INSURE NUT SWIVELS. (B 1)
 - (b) ASSEMBLE SOCKET PER ACES 2813.