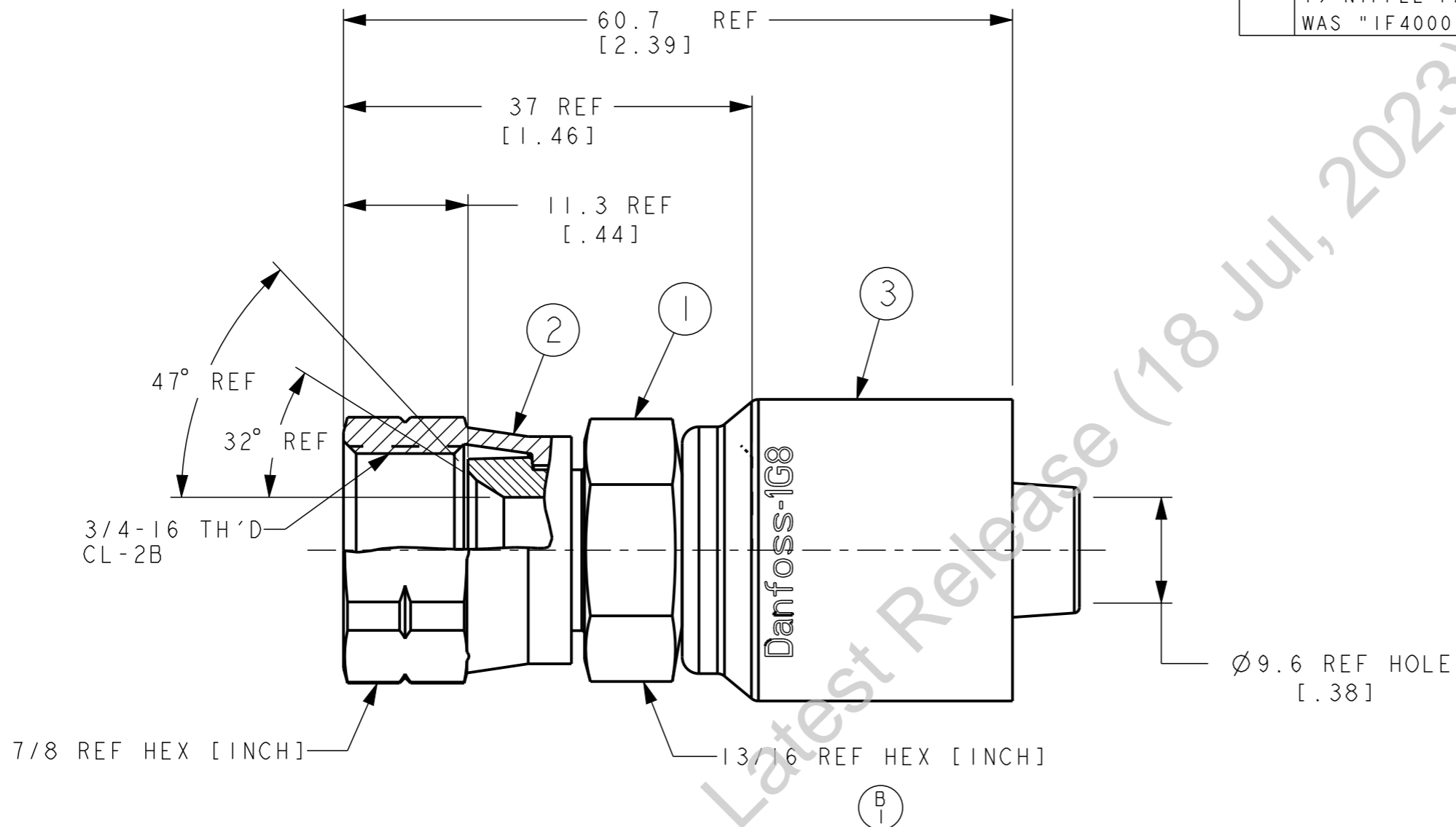


| PART NUMBER | SURFACE AREA | MASS |
|-------------|-----------------------|------|
| IGA8FS8 | 13444 mm ² | 96 g |

| REVISIONS | | | |
|-----------|---|-------------------|------------|
| REV | DESCRIPTION | DATE | APPROVED |
| B | REDRAWN. UPDATED TO LATEST FORMAT. 1) NIPPLE PART NUMBER WAS "IF40001A0808-S". | 2023-07-28 VSP | CO-0229802 |



| | | | | | |
|-------------|----------------|-----------|----------|--|--|
| IGA8FS8 | IF40000A0808-S | 210224-8S | 1G8 | | |
| PART NUMBER | ① NIPPLE | ② NUT | ③ SOCKET | | |

LIST OF MATERIALS

| ITEM NO. | MATERIAL | FLUID CONVEYANCE DIVISION MAUMEE, OHIO U.S.A. | | DRAWN V. PATIL | |
|----------|----------|--|-----------------|----------------------------------|--|
| 1 | STEEL | | | CHECKED V. PATIL | |
| 2 | STEEL | | | APPROVED B. JADHAV | |
| 3 | STEEL | | | RELEASE DATE 2023-07-28 | |
| | | | | DRAWING INTERPRETATION PER ES 10 | |
| | | | | DRAWING TITLE | |
| | | | | FITTING ASSEMBLY | |
| | | | | SAE 45° FEMALE SWIVEL OTC | |
| | | CO-0229802 | CAGE CODE 01276 | DRAWING NUMBER | |
| | | THIRD ANGLE PROJECTION | DIST U | IGA8FS8 | |
| | | SIZE A3 | SCALE 2/1 | REV | |
| | | SHEET 1 | | B | |

3. ISA8FS8 NIPPLE ASSEMBLY MAY BE SUBSTITUTED FOR ITEMS #1 AND #2.
2. PROCESS AS FOLLOWS:
(a) CRIMP NUT PER ES 2409P3.
(b) ASSEMBLE SOCKET PER ACES 2813.
1. DIMENSIONS ARE IN MILLIMETERS [INCHES].

THE REPRODUCTION, DISTRIBUTION, AND UTILIZATION OF THIS DOCUMENT AS WELL AS THE COMMUNICATION OF ITS CONTENTS TO OTHERS WITHOUT EXPLICIT AUTHORIZATION IS PROHIBITED. OFFENDERS WILL BE HELD LIABLE FOR THE PAYMENT OF DAMAGES. ALL RIGHTS RESERVED IN THE EVENT OF THE GRANT OF A PATENT, UTILITY MODEL OR DESIGN. (PER ISO 16016)