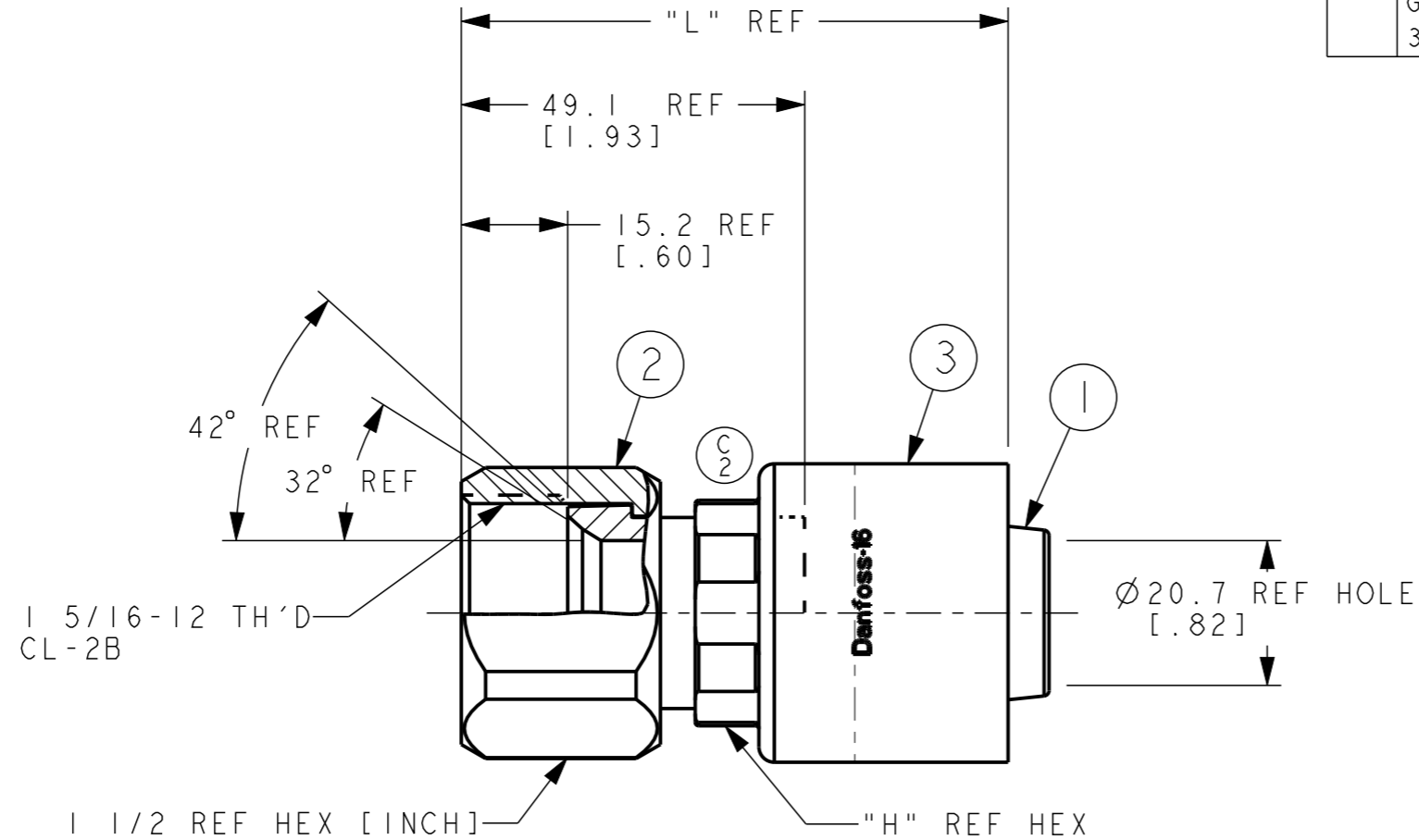


PART NUMBER	SOCKET	SURFACE AREA	MASS	L	H
IGA16FJ16	IG16	29669 mm <sup>2</sup>	298 g	76.8 [3.02]	1 3/8 [INCH]
IGA16FJ16	IF21-16-S	30681 mm <sup>2</sup>	298 g	78.1 [3.07]	31

REVISIONS			
REV	DESCRIPTION	DATE	APPROVED
C	REDRAWN. 1) ADDED HVF DESIGN. 2) UPDATED DRAWING VIEW GEOMETRY TO SHOW HVF DESIGN. 3) ADDED NOTE #3 & #4.	2023-07-07 VSP	CO-0230021


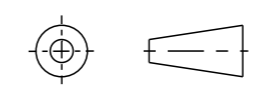


METRIC

①	③	IGA16FJ16	IF40610-1616-S	1290-16S	IF21-16-S		
⑤	④	②	IGA16FJ16	IF40000A1616-S	210204-16S	IG16	
		PART NUMBER	① NIPPLE	② NUT	③ SOCKET		

LIST OF MATERIALS

ITEM NO.	MATERIAL
1	STEEL
2	STEEL
3	STEEL

FLUID CONVEYANCE DIVISION MAUMEE, OHIO U.S.A.		DRAWN	V. PATIL
		CHECKED	V. PATIL
		APPROVED	N. BEINING
CO-0230021		RELEASE DATE	2023-07-07
CAGE CODE 01276		DRAWING INTERPRETATION PER ES 10	
THIRD ANGLE PROJECTION		DRAWING TITLE	
		FITTING ASSEMBLY	
SIZE A3		HIGH PRESSURE SAE 37° FEMALE SWIVEL OTC	
SCALE 1/1		DRAWING NUMBER	REV
SHEET 1		IGA16FJ16	C
<small>THE REPRODUCTION, DISTRIBUTION, AND UTILIZATION OF THIS DOCUMENT AS WELL AS THE COMMUNICATION OF ITS CONTENTS TO OTHERS WITHOUT EXPLICIT AUTHORIZATION IS PROHIBITED. OFFENDERS WILL BE HELD LIABLE FOR THE PAYMENT OF DAMAGES. ALL RIGHTS RESERVED IN THE EVENT OF THE GRANT OF A PATENT, UTILITY MODEL OR DESIGN. (PER ISO 16016)</small>			

- ⑤ ISAI6FJ16 NIPPLE ASSEMBLY MAY BE SUBSTITUTED FOR ITEMS #1 AND #2.
  - ④ PART IS NOT SHOWN ON DRAWING. (C3)
  - ③ PROCESS AS FOLLOWS:  
a) ASSEMBLE NUT. (C3)  
b) CRIMP SOCKET PER ACES 2813 (C3)
  - ② PROCESS AS FOLLOWS:  
a) CRIMP NUT PER ACES 2813.  
b) ASSEMBLE SOCKET PER ACES 2813.
1. DIMENSIONS ARE IN MILLIMETERS [INCHES].