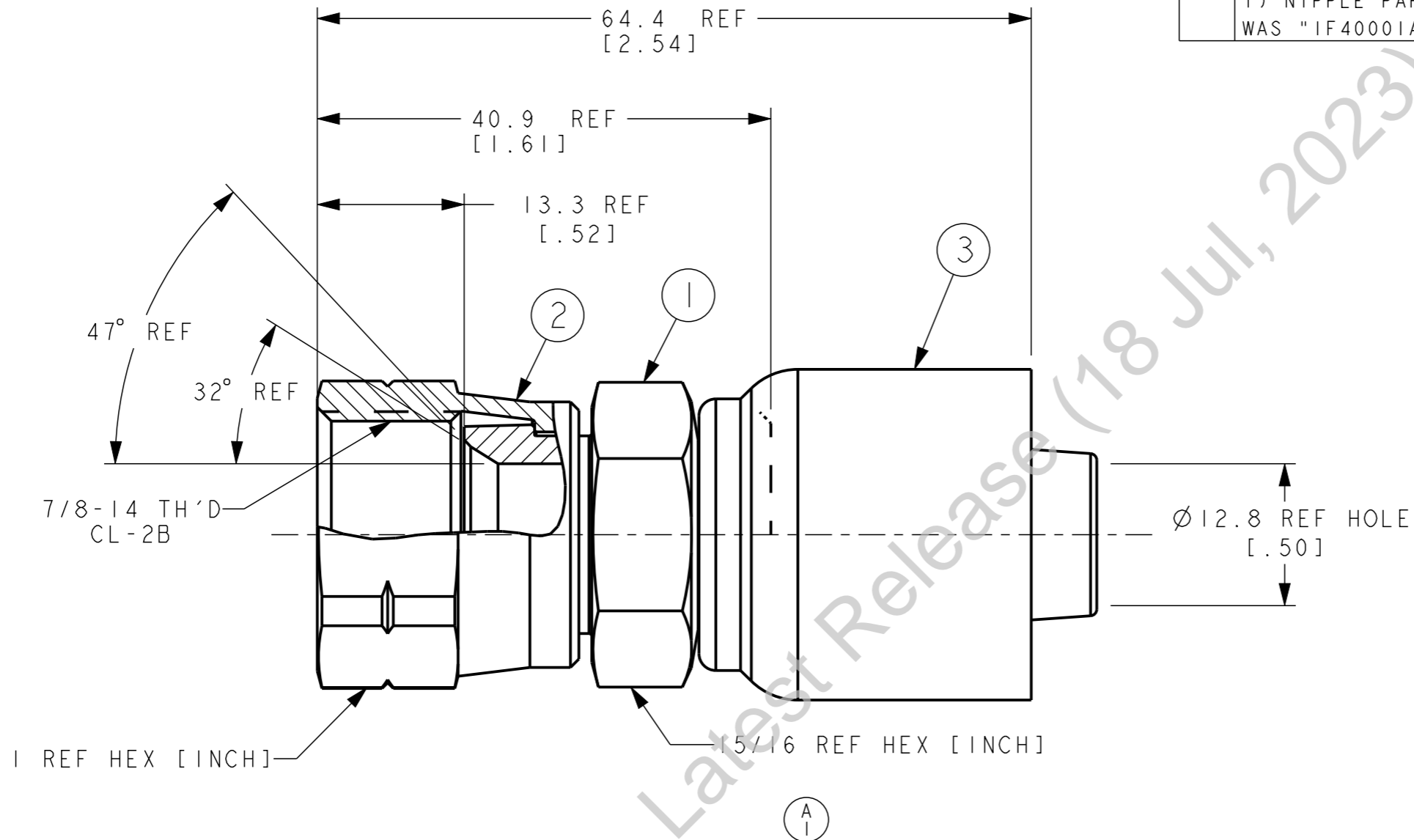



PART NUMBER	SURFACE AREA	MASS
IGA10FS10	16239 mm <sup>2</sup>	122 g

REVISIONS			
REV	DESCRIPTION	DATE	APPROVED
A	REDRAWN. UPDATED TO LATEST FORMAT. 1) NIPPLE PART NUMBER WAS "IF4000A1010-S".	2023-07-28 VSP	CO-0229802



IGA10FS10	IF4000A1010-S	210224-10S	IG10		
PART NUMBER	① NIPPLE	② NUT	③ SOCKET		

LIST OF MATERIALS

ITEM NO.	MATERIAL	FLUID CONVEYANCE DIVISION MAUMEE, OHIO U.S.A.		DRAWN V. PATIL	
1	STEEL			CHECKED V. PATIL	
2	STEEL			APPROVED B. JADHAV	
3	STEEL			RELEASE DATE 2023-07-28	
		DRAWING INTERPRETATION PER ES 10		DRAWING TITLE	
		DRAWING TITLE		FITTING ASSEMBLY	
		DRAWING TITLE		SAE 45° FEMALE SWIVEL OTC	
		DRAWING NUMBER		REV	
		IGA10FS10		A	

3. ISA10FS10 NIPPLE ASSEMBLY MAY BE SUBSTITUTED FOR ITEMS #1 AND #2.

2. PROCESS AS FOLLOWS:  
(a) CRIMP NUT PER 2409P3.  
(b) ASSEMBLE SOCKET PER ACES 2813.

1. DIMENSIONS ARE IN MILLIMETERS [INCHES].

THE REPRODUCTION, DISTRIBUTION, AND UTILIZATION OF THIS DOCUMENT AS WELL AS THE COMMUNICATION OF ITS CONTENTS TO OTHERS WITHOUT EXPLICIT AUTHORIZATION IS PROHIBITED. OFFENDERS WILL BE HELD LIABLE FOR THE PAYMENT OF DAMAGES. ALL RIGHTS RESERVED IN THE EVENT OF THE GRANT OF A PATENT, UTILITY MODEL OR DESIGN. (PER ISO 16016)