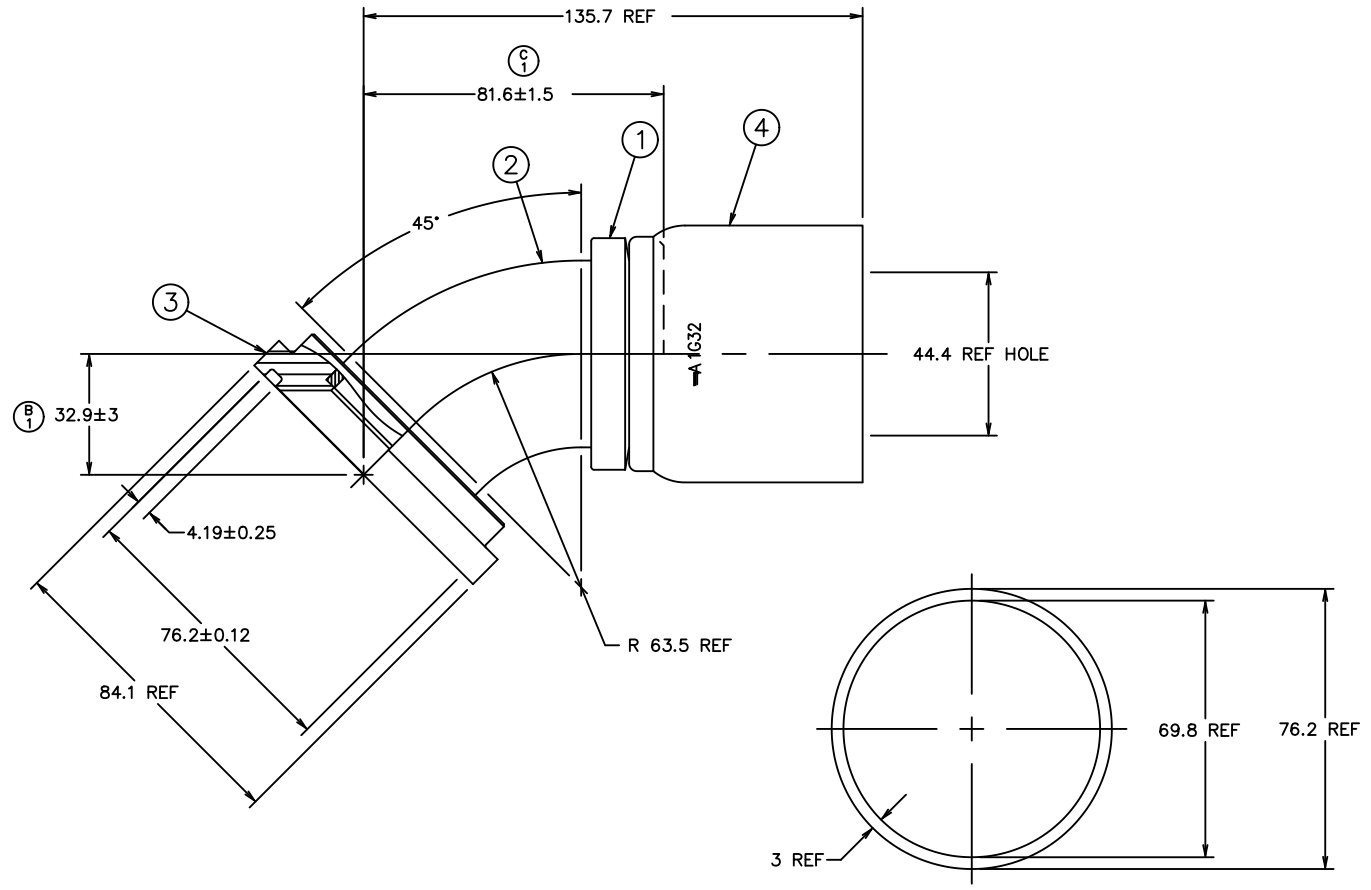


REVISIONS			
REV	DESCRIPTION	DATE	APPROVED
B	REDRAWN - SUPERSEDES 1G_FL_A_ REV "A" FOR 1G40FLA32 (1) WAS 32.8±3	12-14-95	EN-F16140 DP-24900
C	(1) WAS 83.6±1.5	7-2-96 R.D.G.	EN-F16447 DP-1141



135.7	5.34
84.1	3.31
81.6±1.5	3.21±.06
76.2±0.12	3.000±.005
76.2	3.00
69.8	2.75
63.5	2.50
44.4	1.75
32.9±3	1.30±.12
4.19±0.25	.165±.010
3	.12
MM	INCH

CONVERSION

METRIC

△ O-RING DETAIL

1G40FLA32	1F40014-3232AB	4045-32S	4624-40-32S	1G32
AEROQUIP PART NUMBER	① NIPPLE	② ELBOW	③ SHOULDER	④ SOCKET
LIST OF MATERIALS				
ITEM NO.	MATERIAL	DRAWN R.D.GARRETT		
1	STEEL	CHECKED M.MOLINA		
2	STEEL	APPROVED R.D.GARRETT		
3	STEEL	RELEASE DATE 12-19-95		
4	STEEL	EN-F16140 DP-24900		
		SIZE C	DRAWING NUMBER 1G40FLA32	REV C
		SCALE 1/1	DIST U	CAGE CODE 01276 SHEET NO

- 3. 1S40FLA32 NIPPLE ASSEMBLY MAY BE SUBSTITUTED FOR ITEMS #1, #2, AND #3.
- △ O-RING SHOWN FOR REFERENCE ONLY. SUPPLIED BUT NOT FURNISHED WITH ASSEMBLY.
- 1. PROCESS AS FOLLOWS:
 - (a) BRAZE PER ACES 2814.
 - (b) ZINC PLATE PER ACES 2751.
 - (c) ASSEMBLE SOCKET PER ACES 2813.

CONVERTED DRAWING CADAM to AutoCAD B/98

REV. C SH. 1 DWG. NO. 1G40FLA32