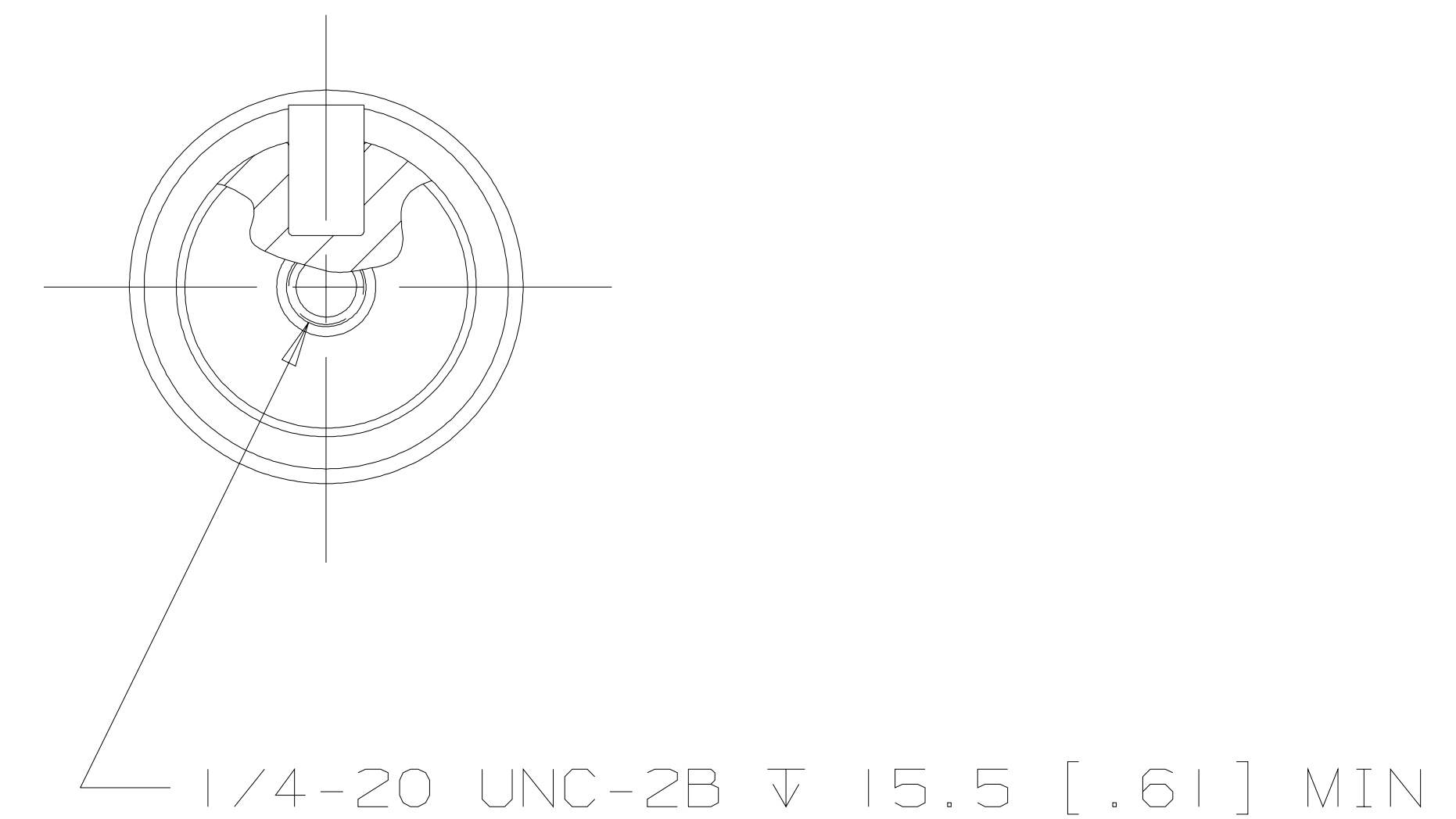
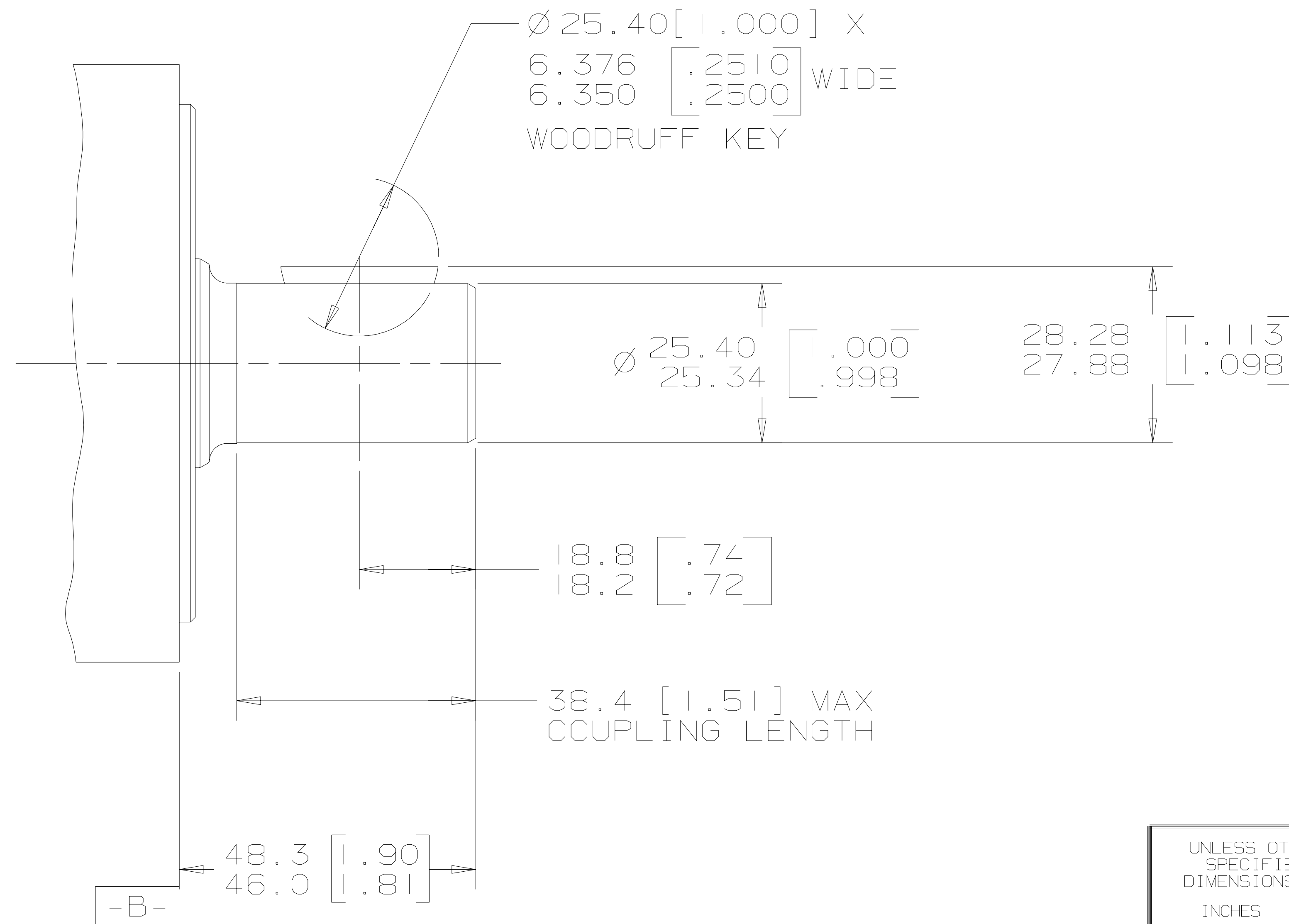


REV	DESCRIPTION	BY	DATE	ECN
A	ENGINEERING RELEASE	AGJ	5-26-93	22833
B	NOTE 1 WAS MOUNTING TYPE: OPTION J	AGJ	5-13-02	41044
C	48.3/46.0 [1.90/1.81] WAS 48.8/45.7 [1.92/1.80]	AGJ	5-17-04	47918
D	NOTE 2 WAS OUTPUT SHAFT: OPTION 01 & 22	PM	4-4-06	54522



G S K

NOTE

- 1 MOUNTING TYPE: OPTION AJ
- 2 OUTPUT SHAFT: OPTION 01 & 15

UNLESS OTHERWISE SPECIFIED ALL DIMENSIONS ARE IN		DRAWING BASED ON ANSI Y14.5M-1982	
INCHES <input type="checkbox"/> MILLIMETERS [INCHES] <input checked="" type="checkbox"/>		NOTICE TO PERSONS RECEIVING THIS DRAWING AND / OR TECHNICAL INFORMATION Eaton Corporation claims proprietary rights in the information disclosed hereon. This document is issued in confidence and is not to be reproduced or used to manufacture anything shown hereon without the written permission of the Eaton Corporation.	
<b>TOLERANCES</b> .X ± ---- .XX ± REF .XXX ± ONLY < ± ----		MATERIAL/HEAT TREAT DRAWN BY/DATE A. JOHNSON 3-19-93 CHECKED BY/DATE SDR 6-24-93	
UNSPECIFIED RADII ARE ----		TITLE 2000 SERIES MOTOR SHAFT INSTALLATION	
UNSPECIFIED DRAFT ANGLES ARE ----		METALLURGY BY/DATE ---- MICROINCHES <input type="checkbox"/> MICROMETERS [MICROINCHES] <input type="checkbox"/>	
DRAWING FORMAT CADD <input checked="" type="checkbox"/> MANUAL <input type="checkbox"/>		NUMBER A-688-001	
THIRD ANGLE PROJECTION 		ARITHMETICAL AVERAGE <input checked="" type="checkbox"/> DO NOT SCALE SCALE 1/1 SHEET 1 OF 1	

