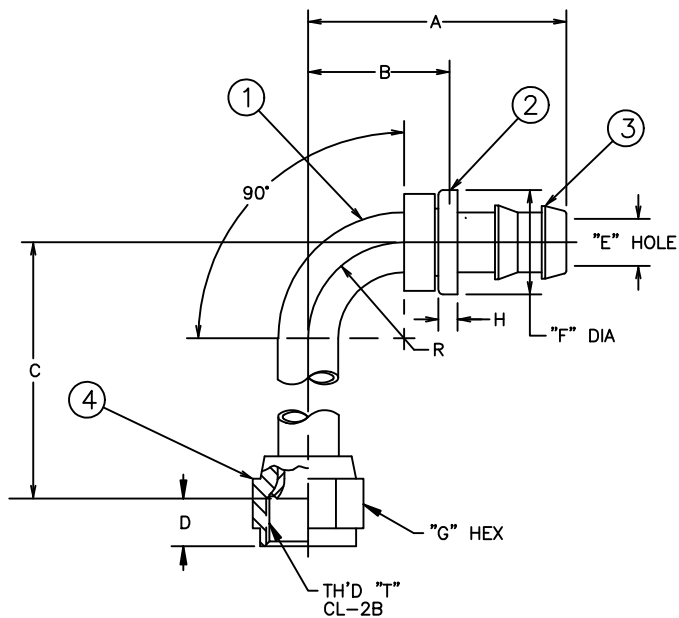


PART NUMBER	TH'D "T"	A	B	C	D	E	F	G	H	R
190465-6S	9/16-18	±.062	REF	±.062	REF	REF	±.010	REF	REF	REF
		1.695	.83	2.179	.40	.24	.725	.69	.16	.50

REVISIONS			
REV.	DESCRIPTION	DATE	APPROVED
D	REDRAWN ON CAD - LAST REV. "C" (1) .24 WAS .30	3-18-92	EN-F12791 ER-F12791
E	(1) ADDED NOTE #3.	9-24-92 J.A.B.	EN-F13373 DAI-23967



Ⓛ

⚠ 3. CAN BE MADE FROM TUBING PER SPECIFICATIONS ON ELBOW DRAWING. Ⓛ

2. FOR OTHER SIZES SEE FC5852-S.

1. PROCESS AS FOLLOWS:
- (a) BRAZE PER ACES 67P3 OR P26.
 - (b) ZINC PLATE PER ACES 18P47.
 - (c) ASSEMBLE NUT AND FLARE PER FF481.
 - (d) ASSEMBLE CAP.

THE REPRODUCTION, DISTRIBUTION AND UTILIZATION OF THIS DOCUMENT AS WELL AS THE COMMUNICATION OF ITS CONTENTS TO OTHER WITHOUT EXPLICIT AUTHORIZATION IS PROHIBITED. OFFENDERS WILL BE HELD LIABLE FOR THE PAYMENT OF DAMAGES. ALL RIGHT RESERVED IN THE EVENT OF THE GRANT OF A PATENT, UTILITY MODEL OR DESIGN. (PER ISO 16016)

190465-6S	409008-6S	4213-1-6B	4131-6S	210201-6S
AEROQUIP PART NUMBER	Ⓛ ELBOW ⚠	Ⓜ HOSE CAP	Ⓝ NIPPLE	Ⓞ NUT
LIST OF MATERIALS				
ITEM NO.	MATERIAL	DRAWN TERRY BAKER	DATE 3-18-92	FLUID CONVEYANCE DIVISION
1	STEEL	CHECKED R.D.GARRETT <td>DATE 3-25-92 <td rowspan="4"> DRAWING TITLE FITTING ASSEMBLY 90°, SAE 37° SWIVEL, 2556 HOSE SIZE (CAGE) CODE NO. C 01276 DRAWING NUMBER 190465-S SHEET U </td> </td>	DATE 3-25-92 <td rowspan="4"> DRAWING TITLE FITTING ASSEMBLY 90°, SAE 37° SWIVEL, 2556 HOSE SIZE (CAGE) CODE NO. C 01276 DRAWING NUMBER 190465-S SHEET U </td>	 DRAWING TITLE FITTING ASSEMBLY 90°, SAE 37° SWIVEL, 2556 HOSE SIZE (CAGE) CODE NO. C 01276 DRAWING NUMBER 190465-S SHEET U
2	BRASS	APPROVED R.D.GARRETT <td>DATE 3-25-92</td>	DATE 3-25-92	
3	STEEL	RELEASED EN-F12791 <td>DATE 3-25-92</td>	DATE 3-25-92	
4	STEEL	PROJECT NO. ER-F12791 <td>APC NO. </td>	APC NO.	
		DESIGN APPROVED		
		APPROVED		

99
+
F2

REV. E

SH.

190465-S

DWG. NO.

CONVERTED DRAWING CADAM to AutoCAD 9/98