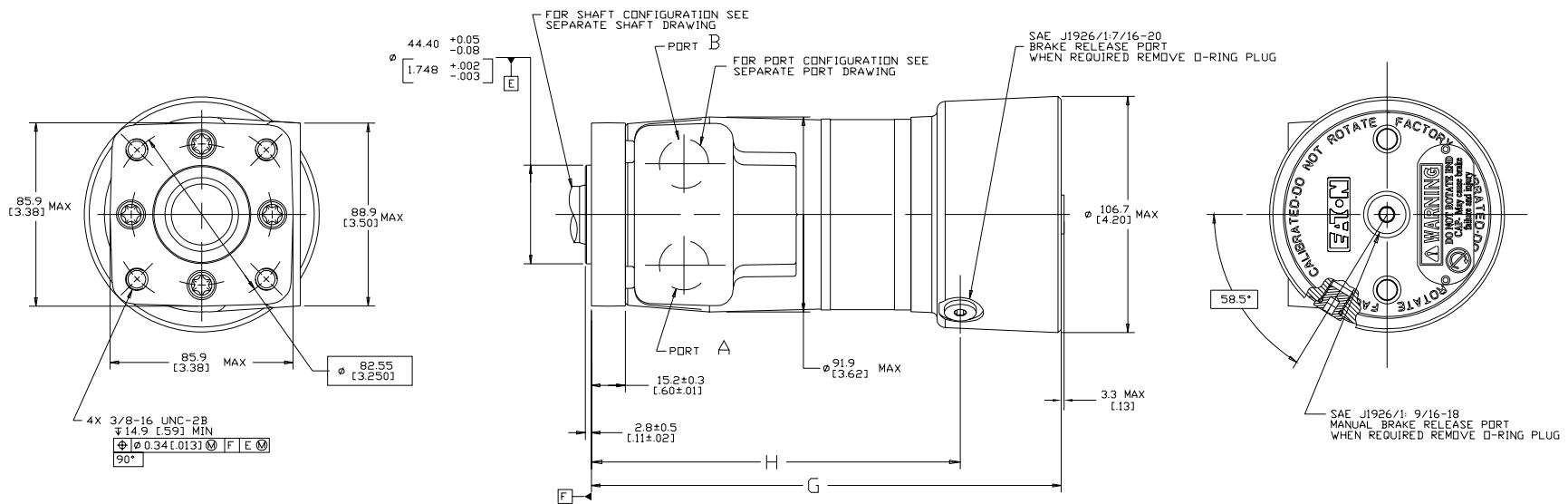


DISPL CODE	G MAX	H
022	190.2 [7.49]	143.9±0.9 [5.67±.03]
030	192.6 [7.58]	146.3±0.9 [5.76±.03]
040	195.6 [7.70]	149.3±0.9 [5.88±.03]
049	198.3 [7.81]	152.0±0.9 [5.98±.03]
062	202.2 [7.96]	155.9±0.9 [6.14±.03]
080	207.6 [8.17]	161.3±0.9 [6.35±.03]
096	212.5 [8.37]	166.2±0.9 [6.54±.03]
119	219.2 [8.63]	172.9±0.9 [6.81±.03]
149	228.3 [8.99]	181.5±0.9 [7.15±.03]
187	239.6 [9.44]	193.3±0.9 [7.61±.03]
226	251.3 [9.89]	205.0±0.9 [8.07±.03]

REV	DESCRIPTION	BY	CHK	DATE	ECN / MPS
A	ENGINEERING RELEASE	SMM		08-12-04	49031
C	REVISED	SSD		08-23-08	M79835
D	-1X(2C) REVISED PICTORIALY -2X(UPDATED TO CURRENT STANDARD	YIS	SMT	06-28-11	0032984
E	(2B) 9/16-18... WAS ...7/16-20...	AAB		07-25-15	M97278
F	-1X(3C)(2C) REVISED PICTORIALY -2X(3B) ADDED 3.3 (.13) MAX	SSP	CSG	02-28-15	0068064



NOTE

1 ROTATION STANDARD WHEN FACING SHAFT END OF MOTOR SHAFT TO ROTATE CLOCKWISE WHEN PORT "A" IS PRESSURIZED COUNTERCLOCKWISE WHEN PORT "B" IS PRESSURIZED

REVERSE WHEN FACING SHAFT END OF MOTOR SHAFT TO ROTATE CLOCKWISE WHEN PORT "B" IS PRESSURIZED COUNTERCLOCKWISE WHEN PORT "A" IS PRESSURIZED

2 MOUNTING TYPE
 BA = 4 BOLT STD: 44.40 [1.748] DIA. X 3.05 [1.20] PILD.
 .375-16 UNC-2B MOUNTING HOLES DN 82.55 [3.250] DIA. B.C.

REVIEWED FOR CLASSIFICATION PER ESP-042

UNLESS OTHERWISE SPECIFIED ALL DIMENSIONS ARE IN INCHES	DRAWING BASED ON ASME Y14.5M-1994	
MILLIMETERS <input type="checkbox"/>	NOTATION: DIMENSIONS OF HOLES AND OTHER FEATURES SHALL BE GIVEN IN MILLIMETERS UNLESS OTHERWISE SPECIFIED AND IS IN INCHES	
TOLERANCES	X ± <input type="checkbox"/> DRAWN DIM 08-17-04 XXX ± <input type="checkbox"/> CHECKED ACJ 08-17-04 < ± <input type="checkbox"/> FINISH 08-17-04	MATERIAL/HEAT TREAT TITLE T MOTOR W/ BRAKE INSTALLATION
UNSPECIFIED RADI ARE:	FINISH BY/DATE 08-17-04 MATERIAL	NUMBER NUMBER NUMBER
UNSPECIFIED DRAFT ANGLES ARE:	<input type="checkbox"/> THIRD ANGLE PROJECTION <input type="checkbox"/> FIRST ANGLE PROJECTION	NUMBER A-1480-002
D SIZE	<input type="checkbox"/> DO NOT SCALE <input type="checkbox"/> METRICAL APPROX	SCALE 1/1 SHEET 1 OF 1