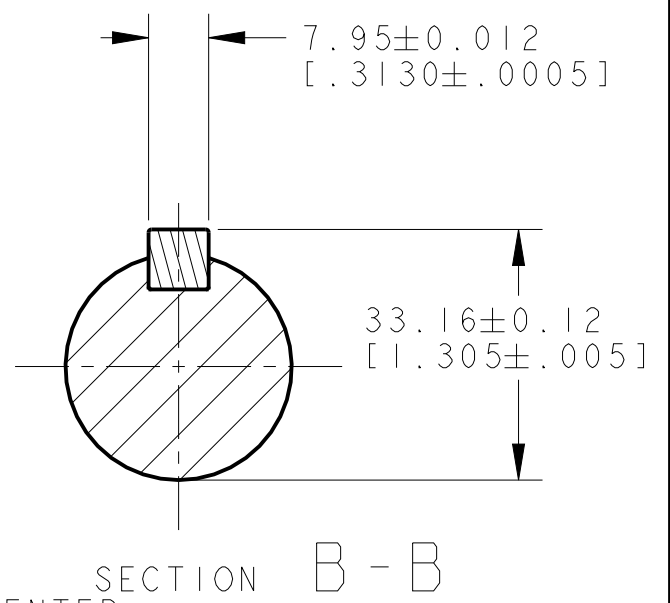
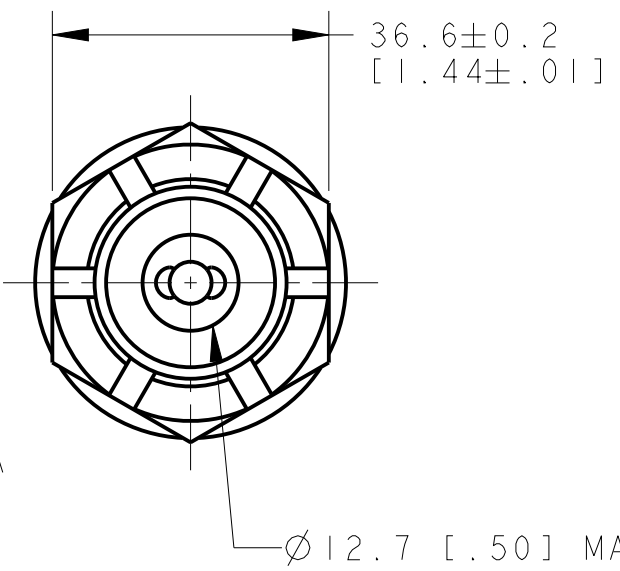
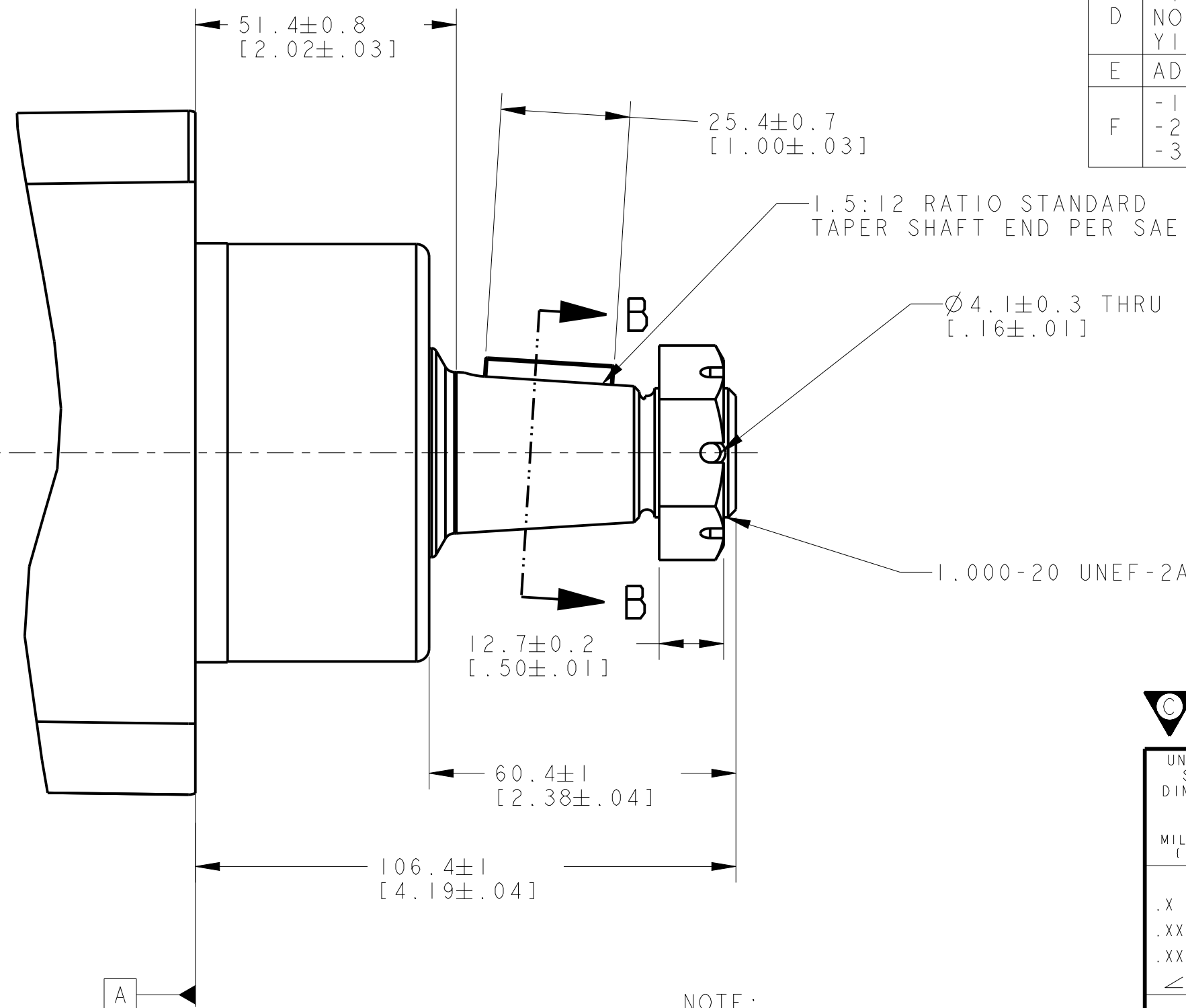


| REV | DESCRIPTION   | BY  | CHK | DATE     | ECN / MPS |
|-----|---|-----|-----|----------|-----------|
| A   | RELEASE FOR SAMPLES AND ESTIMATES   | PM  |     | 03/09/06 | X-54953   |
| B   | ENGINEERING RELEASE   | SKS |     | 5-11-04  | M61164    |
| C   | 106.4±1.0[4.19±.04] WAS<br>106.9±0.8[4.21±.03]  | CSG | SVG | 06-08-09 | M76139    |
| D   | -1)ADDED OUTPUT SHAFT OPTION 24 TO<br>NOTE 2 -2)DRAWING UPDATED TO ASME<br>Y14.5M-1994 STANDARD | ABH | CSG | 7/12/13  | M89825    |
| E   | ADDED MOUNTING TYPE AE TO NOTE 1  | YUP | AAB | 08/01/13 | M90040    |
| F   | -1)DRAWING REVISED FOR STACK-UP<br>-2)REVISED SECTION B-B<br>-3)ADDED MOUNTINGTYPE AF TO NOTE 1 | YUP | YUP | 01/19/16 | M98843A   |



NOTE:  
1 MOUNTING TYPE : AA, AE, AF  
2 OUTPUT SHAFT : 02, 24

**C/S** REVIEWED FOR CLASSIFICATION PER ESP-042

|   |  |   |   |
|---|--|---|---|
| UNLESS OTHERWISE SPECIFIED ALL DIMENSIONS ARE IN INCHES <input checked="" type="checkbox"/> MILLIMETERS (INCHES) <input type="checkbox"/> |  | DRAWING BASED ON ASME Y14.5-2009  |   |
| TOLERANCES<br>.X ± 0.1<br>.XX ± 0.01<br>.XXX ± 0.001<br>∠ ± 0.5°  |  | EATON CORPORATION - CONFIDENTIAL AND PROPRIETARY<br>NOTICE TO PERSONS RECEIVING THIS DRAWING AND / OR TECHNICAL INFORMATION<br><small>THIS DOCUMENT, INCLUDING THE DRAWING AND INFORMATION CONTAINED THEREON, IS CONFIDENTIAL AND IS THE EXCLUSIVE PROPERTY OF EATON CORPORATION, AND IS MERELY ON LOAN AND SUBJECT TO RECALL BY EATON AT ANY TIME. BY TAKING POSSESSION OF THIS DOCUMENT, THE RECIPIENT ACKNOWLEDGES AND AGREES THAT THIS DOCUMENT CANNOT BE USED IN ANY MANNER ADVERSE TO THE INTERESTS OF EATON, AND THAT NO PORTION OF THIS DOCUMENT MAY BE COPIED OR OTHERWISE REPRODUCED WITHOUT THE PRIOR WRITTEN CONSENT OF EATON. IN THE CASE OF CONFLICTING CONTRACTUAL PROVISIONS, THIS NOTICE SHALL GOVERN THE STATUS OF THIS DOCUMENT. COPYRIGHT 2008 EATON CORPORATION - ALL RIGHTS RESERVED.</small> |   |
| UNSPECIFIED RADII ARE:<br>---   |  | DRAWN PM<br>BY/DATE 03/14/2006  | MATERIAL/HEAT TREAT<br>-                |
| UNSPECIFIED DRAFT ANGLES ARE:<br>---  |  | CHECKED SMM<br>BY/DATE 03/14/2006   | TITLE<br>DELTA MOTOR SHAFT INSTALLATION |
| B SIZE  |  | ENGRG TIM<br>BY/DATE 03/14/2006   |   |
| THIRD ANGLE PROJECTION<br>DO NOT SCALE  |  | METALLURGY ---<br>BY/DATE ---   | NUMBER<br>A-2824-002                    |
| ARITHMETICAL AVERAGE  |  | SCALE 1/1   | SHEET 1 OF 1                            |

**EATON**  
Powering Business Worldwide  
Eaton Hydraulics LLC  
14615 Lone Oak Road  
Eden Prairie, MN 55344  
USA