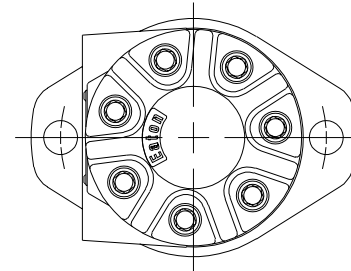
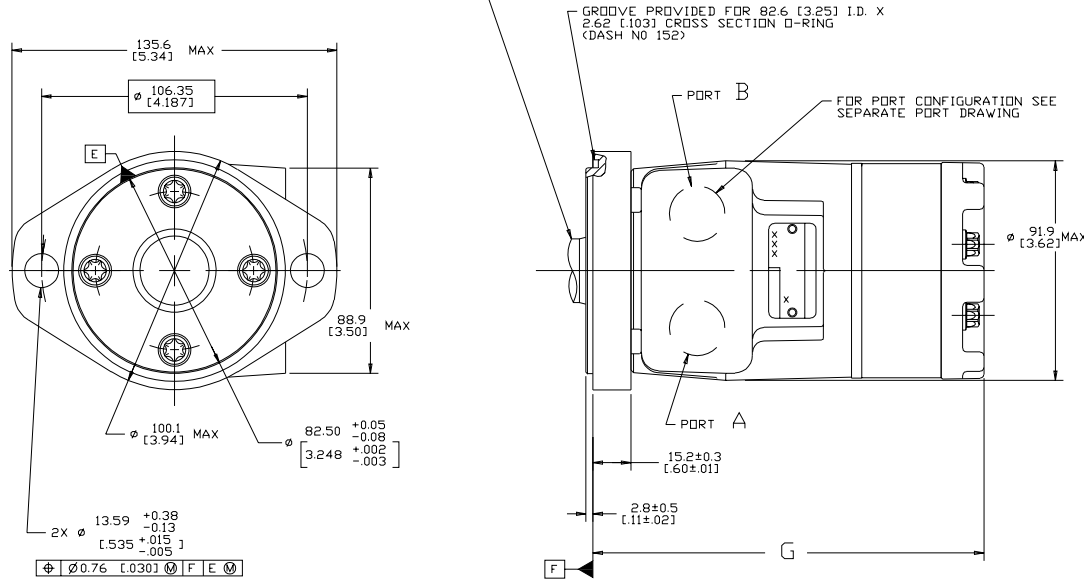


DISPL CODE	G	MAX
022	132.2	[5.21]
025	133.1	[5.24]
030	134.6	[5.30]
036	136.4	[5.37]
040	137.6	[5.42]
049	140.3	[5.53]
062	144.2	[5.68]
080	149.6	[5.89]
096	154.5	[6.08]
119	161.2	[6.35]
149	170.3	[6.70]
187	181.7	[7.15]
226	193.3	[7.61]
298	215.0	[8.46]

REV	DESCRIPTION	BY	DATE	ECN
A	ENGINEERING RELEASE	RAF	2-8-94	M1208
B	-1X(3B) 88.9 [3.50] MAX WAS 84.6 [3.33] MAX -2X(2C) Ø 91.9 [3.62] MAX WAS Ø 88.8 [3.49] MAX	JMM	10-26-94	26147
C	4(B)Ø13.59+0.38/-0.13 [5.35+0.015/-0.005] WAS Ø13.59±0.13 [5.35±0.005]	AGJ	1-28-95	39853
D	-1X(4B) WAS 96.8 [3.81] MAX. -2X(4D) WAS 131.4 [5.17] MAX.	AAK	04-07-94	46856
E	-1X(4D) UPDATED TABLE FOR DISPL CODE -2X(4A) NOTE 2 MOUNTING FLANGE WAS 'A'	PM	02-27-97	0004355
F	4(B) [Ø 0.76 [0.030] [E] [F] [M] WAS [Ø 0.64 [0.025] [E] [F]	KNR	6-11-99	M76172
G	REVISED FOR STACK-UP	SMT	07-12-11	M82724
H	(6A) NOTE 3 WAS CASE DRAIN : 0...	SSF	12-26-15	0068668.1



- NOTE
- 1 ROTATION STANDARD WHEN FACING SHAFT END OF MOTOR SHAFT TO ROTATE CLOCKWISE WHEN PORT 'A' IS PRESSURIZED COUNTERCLOCKWISE WHEN PORT 'B' IS PRESSURIZED

REVERSE WHEN FACING SHAFT END OF MOTOR SHAFT TO ROTATE COUNTERCLOCKWISE WHEN PORT 'A' IS PRESSURIZED
  - 2 MOUNTING FLANGE AA = STANDARD, 2 BOLT: Ø 82.6 [3.25] X 3.0 [1.2] PILOT Ø 13.59 [5.35] HOLES ON Ø 106.2 [4.18] BOLT CIRCLE
  - 3 CASE DRAIN 00 = NO CASE DRAIN

**REVIEWED FOR CLASSIFICATION PER ESP-042**

UNLESS OTHERWISE SPECIFIED ALL DIMENSIONS ARE IN INCHES

DRAWING BASED ON ASME Y14.5M-1994

EATON CORPORATION - CONFIDENTIAL AND PROPRIETARY NOTICE TO PERSONS RECEIVING THIS DRAWING: THIS DRAWING INCLUDES TRADE SECRETS AND PROPRIETARY INFORMATION AND IS NOT TO BE DISCLOSED OR REPRODUCED IN ANY MANNER WITHOUT THE WRITTEN PERMISSION OF EATON CORPORATION. EATON CORPORATION IS NOT RESPONSIBLE FOR ANY REPRODUCTION OR TRANSMISSION OF THIS DRAWING IN ANY MANNER WITHOUT THE WRITTEN PERMISSION OF EATON CORPORATION. EATON CORPORATION IS NOT RESPONSIBLE FOR ANY REPRODUCTION OR TRANSMISSION OF THIS DRAWING IN ANY MANNER WITHOUT THE WRITTEN PERMISSION OF EATON CORPORATION.

UNLESS OTHERWISE SPECIFIED ALL DIMENSIONS ARE IN INCHES

TOLERANCES

X ± —

XX ± —

XXX ± —

UNSPECIFIED RADI ARE:

REVISIONS

UNLESS OTHERWISE SPECIFIED ALL DIMENSIONS ARE IN INCHES

DRAFT ANGLES ARE:

D SIZE

SCALE 1/1 SHEET 1 OF 1

NUMBER A-821-008