

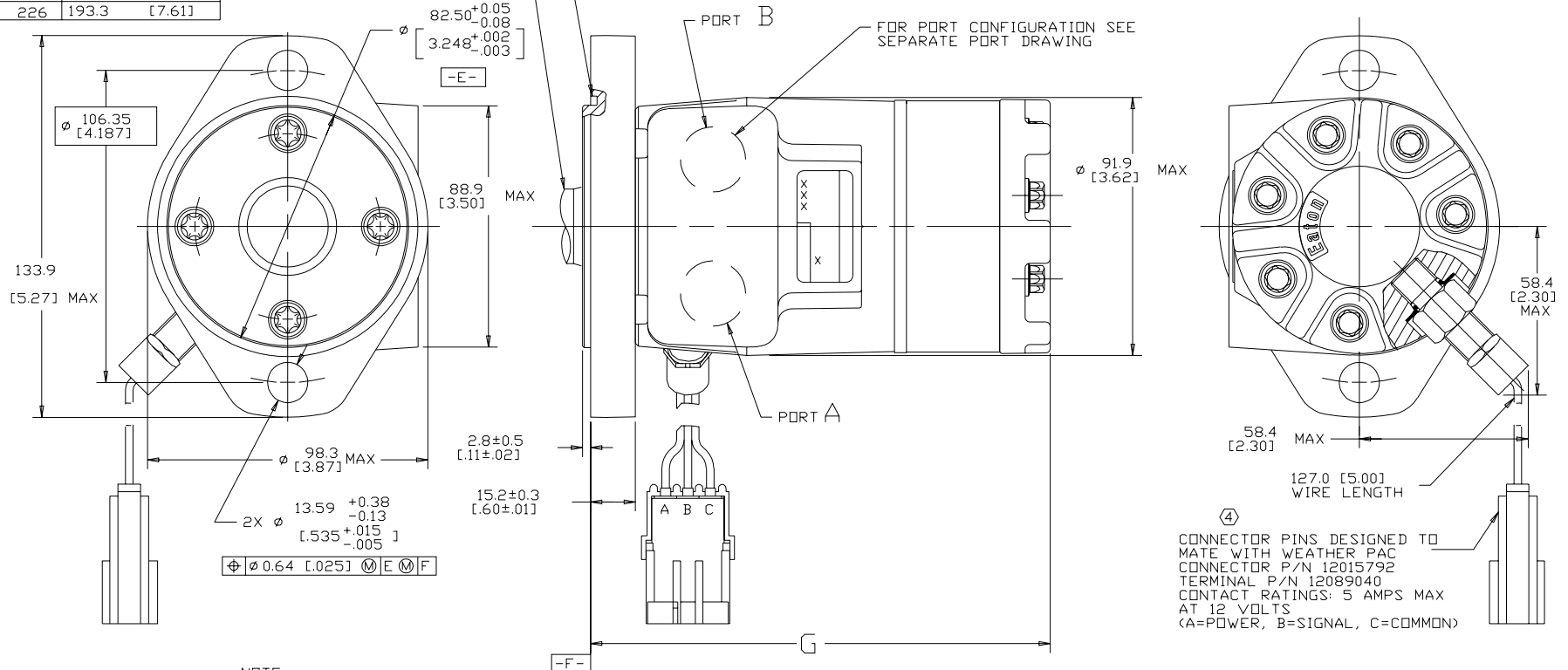
REV	DESCRIPTION	BY	CHK	DATE	ECN
A	ENGINEERING RELEASE	AGJ		10-11-95	M14284
B	ADDED SENSOR DIMENSIONS	MGF		11-11-97	30385
C	<4B>Ø13.59+0.38/-0.13 [.535+.015/-0.05] WAS Ø13.59±0.13 [.535±.005]	AGJ		1-28-02	39853
D	-1<4C> WAS 131.4 [5.17] MAX. -2<4B> WAS 96.8 [3.81] MAX.	AAK		4-7-04	46856
E	-1<4D>UPDATED TABLE FOR DISPL CODE -2<4A>NOTE 2 MOUNTING FLANGE WAS "A"	PM		03-27-07	0004355
F	<4A> NOTE 3 WAS CASE DRAIN :0.	SSPSB		12-26-15	0068068..

DISP. CODE	G	MAX
022	132.2	[5.21]
030	134.6	[5.30]
040	137.6	[5.42]
049	140.2	[5.52]
062	144.2	[5.68]
080	149.6	[5.89]
096	154.4	[6.08]
119	161.2	[6.35]
149	170.2	[6.70]
187	181.6	[7.15]
226	193.3	[7.61]

FOR SHAFT CONFIGURATION SEE SEPARATE SHAFT DRAWING

GROOVE PROVIDED FOR 82.6 [3.25] I.D. X 2.62 [0.103] CROSS SECTION O-RING (DASH NO. 152)

FOR PORT CONFIGURATION SEE SEPARATE PORT DRAWING



CONNECTOR PINS DESIGNED TO MATE WITH WEATHER PAC CONNECTOR P/N 12015792 TERMINAL P/N 12089040 CONTACT RATINGS: 5 AMPS MAX AT 12 VOLTS (A=POWER, B=SIGNAL, C=COMMON)

- NOTE
- 1 ROTATION STANDARD WHEN FACING SHAFT END OF MOTOR SHAFT TO ROTATE CLOCKWISE WHEN PORT "A" IS PRESSURIZED COUNTERCLOCKWISE WHEN PORT "B" IS PRESSURIZED
 - REVERSE WHEN FACING SHAFT END OF MOTOR SHAFT TO ROTATE CLOCKWISE WHEN PORT "B" IS PRESSURIZED COUNTERCLOCKWISE WHEN PORT "A" IS PRESSURIZED
 - 2 MOUNTING FLANGE AA = STANDARD, 2 BOLT: Ø 82.6 [3.25] X 3.0 [0.12] PILOT Ø 13.59 [0.535] HOLES ON Ø 106.2 [4.18] BOLT CIRCLE
 - 3 CASE DRAIN 00 = NO CASE DRAIN
 - 4 SENSOR OUTPUT WILL BE 15 ELECTRICAL PULSES PER SHAFT REVOLUTION. SUPPLY VOLTAGE: 8 TO 28 Vdc OUTPUT VOLTAGE: LOW .5 Vdc AT 10 mA; HIGH Vs-1 Vdc

UNLESS OTHERWISE SPECIFIED ALL DIMENSIONS ARE IN INCHES <input type="checkbox"/> MILLIMETERS <input checked="" type="checkbox"/>	DRAWING BASED ON ANSI Y14.5M-1982	
	NOTICE TO PERSONS RECEIVING THIS DRAWING AND / OR TECHNICAL INFORMATION Eaton Corporation claims proprietary rights in the information disclosed herein. This document is issued in confidence and is not to be reproduced or used to manufacture anything shown herein without the written permission of the Eaton Corporation.	
	 Eaton Corporation Hydraulics Division 1551 Highway Evan, France 92, 95344	
	DRAWN BY/DATE: AGJ 10-13-95	
TOLERANCES	CHECKED BY/DATE: RAF 10-13-95	MATERIAL/HEAT TREAT
X ± ----	ENG BY/DATE: RVA 10-13-95	TITLE
XX ± ----	METALLURGY BY/DATE: ----	T MOTOR INSTALLATION
XXX ± ----	UNSPECIFIED RADII ARE	MICROMETERS <input type="checkbox"/> NUMBER
< ± ----	UNSPECIFIED DRAFT ANGLES ARE	THIRD ANGLE PROJECTION <input checked="" type="checkbox"/>
	DRAWING FORMAT CAD <input checked="" type="checkbox"/> MANUAL <input type="checkbox"/>	DO NOT SCALE
		ARITHMETICAL AVERAGE <input checked="" type="checkbox"/>
		SCALE 1/1 SHEET 1 OF 1