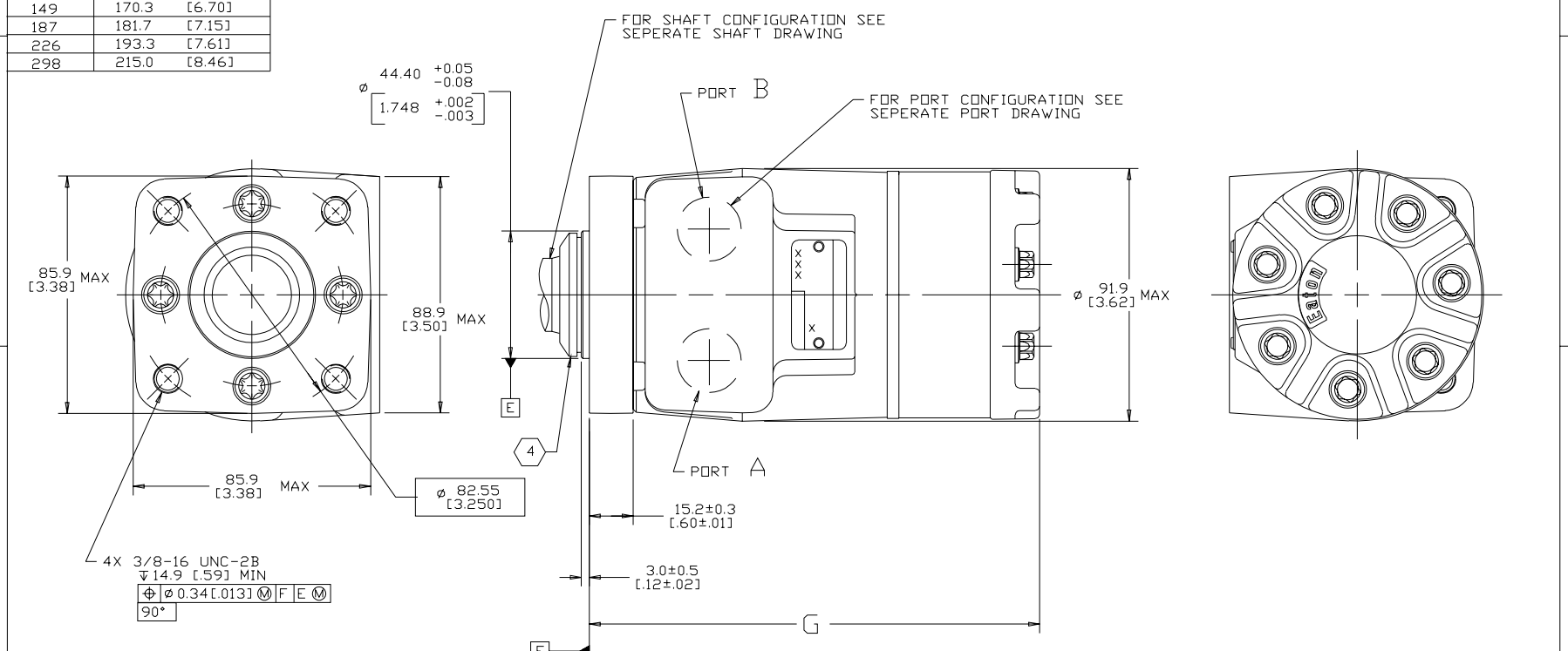


DISPL CODE	G	MAX
018	132.2	[5.21]
022	132.2	[5.21]
025	133.1	[5.24]
030	134.6	[5.30]
036	136.4	[5.37]
040	137.6	[5.42]
049	140.3	[5.53]
062	144.2	[5.68]
080	149.6	[5.89]
096	154.5	[6.08]
119	161.2	[6.35]
149	170.3	[6.70]
187	181.7	[7.15]
226	193.3	[7.61]
298	215.0	[8.46]

REV	DESCRIPTION	BY	CHK	DATE	ECN / MPS
A	ENGINEERING RELEASE	RAF		2-8-94	M11208
F	REVISED	SSD		10-15-09	M77172
G	-1<X3B>15.2±0.3 WAS 17.3±0.3 [.60±.01] [.68±.01] -2<X4D>TABULATION BLOCK REVISED AS PER STACK-UP	HAT	SMT	01-07-13	0046103
H	<4D>G MAX VALUE OF DISP CODE 080 WAS 149.6 [6.89]	YUP		12-04-13	0053338
J	<4A> NOTE 3 WAS CASE DRAIN :0....	SSP	SMT	12-26-15	0068068_1
K	<4A> ADDED NOTE (4)	JVD	CSG	07-05-16	M101233



NOTE

1 ROTATION
STANDARD WHEN FACING SHAFT END OF MOTOR SHAFT TO ROTATE CLOCKWISE WHEN PORT "A" IS PRESSURIZED COUNTERCLOCKWISE WHEN PORT "B" IS PRESSURIZED
REVERSE WHEN FACING SHAFT END OF MOTOR, SHAFT TO ROTATE CLOCKWISE WHEN PORT "B" IS PRESSURIZED COUNTERCLOCKWISE WHEN PORT "A" IS PRESSURIZED

2 MOUNTING FLANGE
BA,BT = STANDARD, 4 BOLT: ϕ 44.4 [1.75] X 3.0 [1.2] PILOT
3/8-16 THREADED HOLES ON ϕ 82.6 [3.25] BOLT CIRCLE

3 CASE DRAIN
00 = NO CASE DRAIN

4 APPLICABLE FOR SEAL OPTIONS : 2,11,12,13 (SLINGER SEAL)

REVIEWED FOR CLASSIFICATION PER ESP-042

UNLESS OTHERWISE SPECIFIED ALL DIMENSIONS ARE IN INCHES		DRAWING BASED ON ASME Y14.5-2009	
MILLIMETERS (ENCHES)		EATON CORPORATION - CONFIDENTIAL AND PROPRIETARY NOTICE TO PERSONS RECEIVING THIS DRAWING AND / OR TECHNICAL INFORMATION	
TOLERANCES		 <small>Eaton Hydraulics, Inc. 14415 Lone Oak Road Eden Prairie, MN 55344 USA</small>	
.X ± ---	DRAWN RAF	MATERIAL/HEAT TREAT	
.XX ± ---	BY/DATE 2-4-94	-	
.XXX ± ---	CHECKED SDR	TITLE	
0 ± ---*	BY/DATE 2-23-94	T MOTOR INSTALLATION	
UNSPECIFIED RADII ARE:	ENGR RVA	NUMBER	
----	BY/DATE 3-3-94	A-821-002	
UNSPECIFIED DRAFT ANGLES ARE:	METALLURGY ----	SCALE 1/1 SHEET 1 OF 1	
-----*	BY/DATE ----		
C SIZE	THIRD ANGLE PROJECTION	ARITHMETICAL AVERAGE	