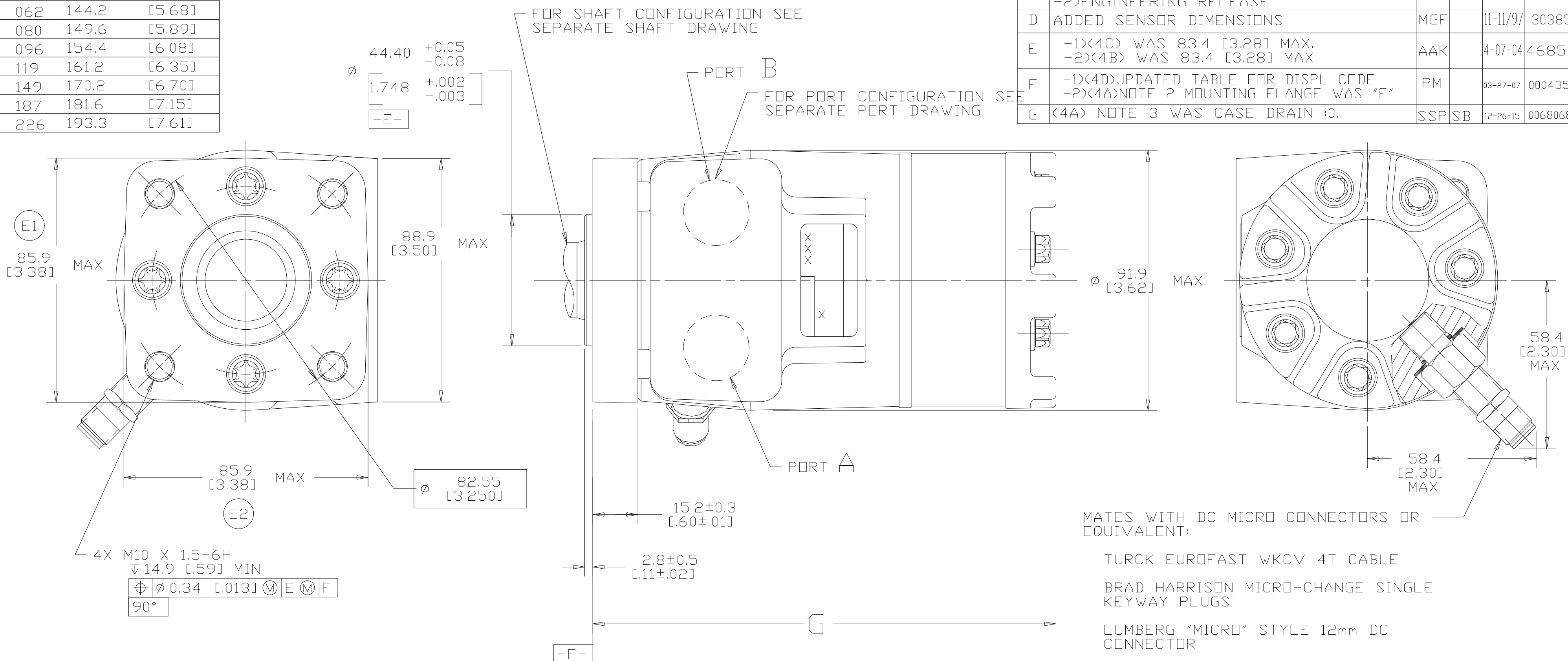


DISP. CODE	G MAX	
022	132.2	[5.21]
030	134.6	[5.30]
040	137.6	[5.42]
049	140.2	[5.52]
062	144.2	[5.68]
080	149.6	[5.89]
096	154.4	[6.08]
119	161.2	[6.35]
149	170.2	[6.70]
187	181.6	[7.15]
226	193.3	[7.61]

REV	DESCRIPTION	BY	CHK	DATE	ECN
A	ENGINEERING RELEASE	RAF		9-19-95	M14165
B	STATUS CHANGED TO RELEASE FOR SAMPLES AND ESTIMATE PENDING SPEED SENSOR QUALIFICATION	RAF		10-30-95	27443
C	-1>REVISED SENSOR PICTORIALY -2>ENGINEERING RELEASE	RAF		9-4-96	28620
D	ADDED SENSOR DIMENSIONS	MGF		11-11/97	30385
E	-1>(4C) WAS 83.4 [3.28] MAX. -2>(4B) WAS 83.4 [3.28] MAX.	AAK		4-07-04	46856
F	-1>(4D)UPDATED TABLE FOR DISPL CODE -2>(4A)NOTE 2 MOUNTING FLANGE WAS "E"	PM		03-27-07	0004355
G	(4A) NOTE 3 WAS CASE DRAIN :0..	SSP/SB		12-26-15	0068068_1



NOTE

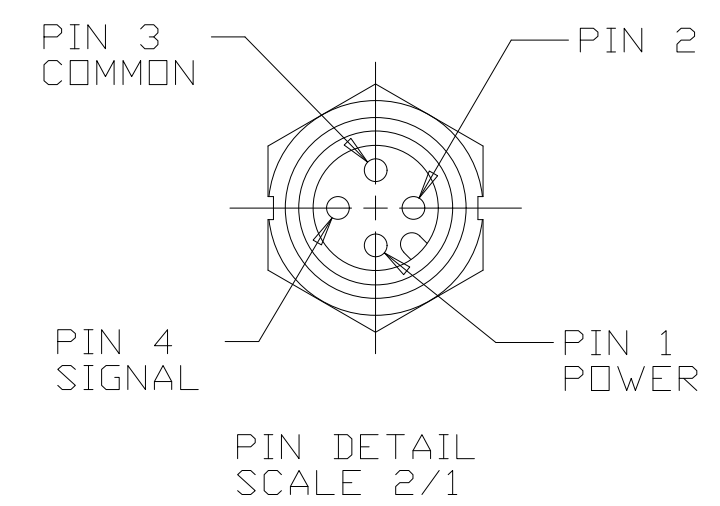
1 ROTATION STANDARD WHEN FACING SHAFT END OF MOTOR SHAFT TO ROTATE CLOCKWISE WHEN PORT "A" IS PRESSURIZED COUNTERCLOCKWISE WHEN PORT "B" IS PRESSURIZED

REVERSE WHEN FACING SHAFT END OF MOTOR SHAFT TO ROTATE CLOCKWISE WHEN PORT "B" IS PRESSURIZED COUNTERCLOCKWISE WHEN PORT "A" IS PRESSURIZED

2 MOUNTING FLANGE
FA = STANDARD, 4 BOLT: ⌀ 44.4 [1.75] X 3.0 [0.12] PILOT M10 X 1.5 THREADED HOLES ON ⌀ 82.6 [3.25] BOLT CIRCLE

3 CASE DRAIN
00 = NO CASE DRAIN

4 SENSOR OUTPUT WILL BE 15 ELECTRICAL PULSES PER SHAFT REVOLUTION.
SUPPLY VOLTAGE: 8 TO 28 Vdc
OUTPUT VOLTAGE: LOW .5 Vdc AT 10 mA; HIGH Vs-1 Vdc



UNLESS OTHERWISE SPECIFIED ALL DIMENSIONS ARE IN INCHES <input type="checkbox"/> MILLIMETERS [INCHES] <input checked="" type="checkbox"/>	DRAWING BASED ON ANSI Y14.5M-1982	
	THE REPRODUCTION, DISTRIBUTION AND UTILIZATION OF THIS DOCUMENT AS WELL AS THE COMMUNICATION OF ITS CONTENTS TO OTHER WITHOUT EXPLICIT AUTHORIZATION IS PROHIBITED. OFFENDERS WILL BE HELD LIABLE FOR THE PAYMENT OF DAMAGES. ALL RIGHT RESERVED IN THE EVENT OF THE GRANT OF A PATENT, UTILITY MODEL OR DESIGN. (PER ISD 16016)	
TOLERANCES X ± ---- .XX ± ---- .XXX ± ---- ∠ ± ----	DRAWN BY/DATE RAF 9-21-95 CHECKED BY/DATE AGJ 9-22-95 ENGRG BY/DATE RJE 9-26-95 METALLURGY BY/DATE ----	MATERIAL/HEAT TREAT
UNSPECIFIED RADII ARE ---- UNSPECIFIED DRAFT ANGLES ARE ----	THIRD ANGLE PROJECTION	TITLE T MOTOR INSTALLATION
DRAWING FORMAT CADD <input checked="" type="checkbox"/> MANUAL <input type="checkbox"/>	DO NOT SCALE	MICROINCHES <input type="checkbox"/> MICROMETERS [MICROINCHES] <input type="checkbox"/> ARITHMETICAL AVERAGE <input checked="" type="checkbox"/>
		NUMBER A-821-039 SCALE 1/1 SHEET 1 OF 1