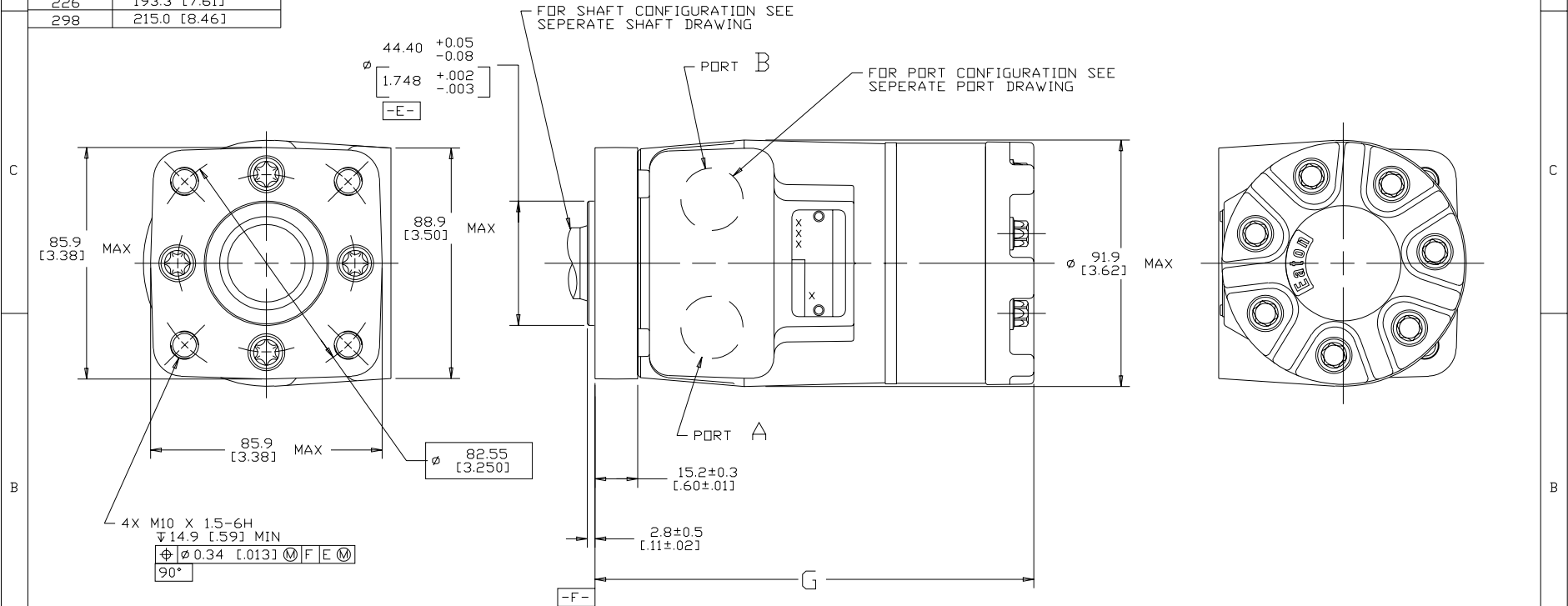


DISPL CODE	G MAX
022	132.2 [5.21]
025	133.1 [5.24]
030	134.6 [5.30]
036	136.4 [5.37]
040	137.6 [5.42]
049	140.3 [5.52]
062	144.2 [5.68]
080	149.6 [5.89]
096	154.5 [6.08]
119	161.2 [6.35]
149	170.3 [6.70]
187	181.6 [7.15]
226	193.3 [7.61]
298	215.0 [8.46]

REV	DESCRIPTION	BY	DATE	ECN
A	ENGINEERING RELEASE	RAF	2-8-94	M11208
E	REVISED	SSD	09-18-09	M76973
F	(4A) NOTE 3 WAS CASE DRAIN : 0.....	SSP	12-26-15	0068068_1



NOTE

1 ROTATION  
 STANDARD WHEN FACING SHAFT END OF MOTOR SHAFT TO ROTATE CLOCKWISE WHEN PORT "A" IS PRESSURIZED COUNTERCLOCKWISE WHEN PORT "B" IS PRESSURIZED  
 REVERSE WHEN FACING SHAFT END OF MOTOR, SHAFT TO ROTATE CLOCKWISE WHEN PORT "B" IS PRESSURIZED COUNTERCLOCKWISE WHEN PORT "A" IS PRESSURIZED

2 MOUNTING FLANGE  
 FA = STANDARD, 4 BOLT: ∅ 44.4 [1.75] X 3.0 [.12] PILOT M10 X 1.5-6H MOUNTING HOLES DN ∅ 82.6 [3.25] BOLT CIRCLE

3 CASE DRAIN  
 00 = NO CASE DRAIN

REVIEWED FOR CLASSIFICATION PER ESP-042

UNLESS OTHERWISE SPECIFIED ALL DIMENSIONS ARE IN INCHES <input type="checkbox"/> MILLIMETERS (INCHES) <input checked="" type="checkbox"/>	DRAWING BASED ON ANSI Y14.5M-1982		
	EATON CORPORATION - CONFIDENTIAL AND PROPRIETARY NOTICE TO PERSONS RECEIVING THIS DRAWING AND/OR TECHNICAL INFORMATION		
	<small>THIS DOCUMENT INCLUDING THE DRAWING AND INFORMATION CONTAINED THEREIN IS CONFIDENTIAL AND IS THE EXCLUSIVE PROPERTY OF EATON CORPORATION AND IS TO BE USED ONLY FOR THE SPECIFIC PROJECT AND APPLICABLE TO THE PARTS AND/OR SERVICES IDENTIFIED HEREIN. IT IS NOT TO BE REPRODUCED, COPIED, OR TRANSMITTED IN ANY FORM OR BY ANY MEANS, ELECTRONIC OR MECHANICAL, INCLUDING PHOTOCOPYING, RECORDING, OR BY ANY INFORMATION STORAGE AND RETRIEVAL SYSTEM, WITHOUT THE WRITTEN PERMISSION OF EATON CORPORATION. ALL RIGHTS RESERVED.</small>		
	<table border="1"> <tr> <td>           DRAWN: RAF            BY/DATE: 2-4-94            CHECKED: SDR            BY/DATE: 2-23-94            ENGRG: RVA            BY/DATE: 3-3-94            METALURGY: -----            BY/DATE: -----         </td> <td>           MATERIAL/HEAT TREAT: -             TITLE: T-MOTOR INSTALLATION             NUMBER: A-821-005            SCALE: 1/1            SHEET: 1 OF 1         </td> </tr> </table>		DRAWN: RAF BY/DATE: 2-4-94 CHECKED: SDR BY/DATE: 2-23-94 ENGRG: RVA BY/DATE: 3-3-94 METALURGY: ----- BY/DATE: -----
DRAWN: RAF BY/DATE: 2-4-94 CHECKED: SDR BY/DATE: 2-23-94 ENGRG: RVA BY/DATE: 3-3-94 METALURGY: ----- BY/DATE: -----	MATERIAL/HEAT TREAT: -  TITLE: T-MOTOR INSTALLATION  NUMBER: A-821-005 SCALE: 1/1 SHEET: 1 OF 1		
TOLERANCES X ± --- XX ± --- XXX ± --- CA ± ---*	UNDESIGNATED RADII ARE: ----- UNDESIGNATED DRAFT ANGLES ARE: -----* C SIZE	THIRD ANGLE PROJECTION DO NOT SCALE ARITHMETICAL AVERAGE	