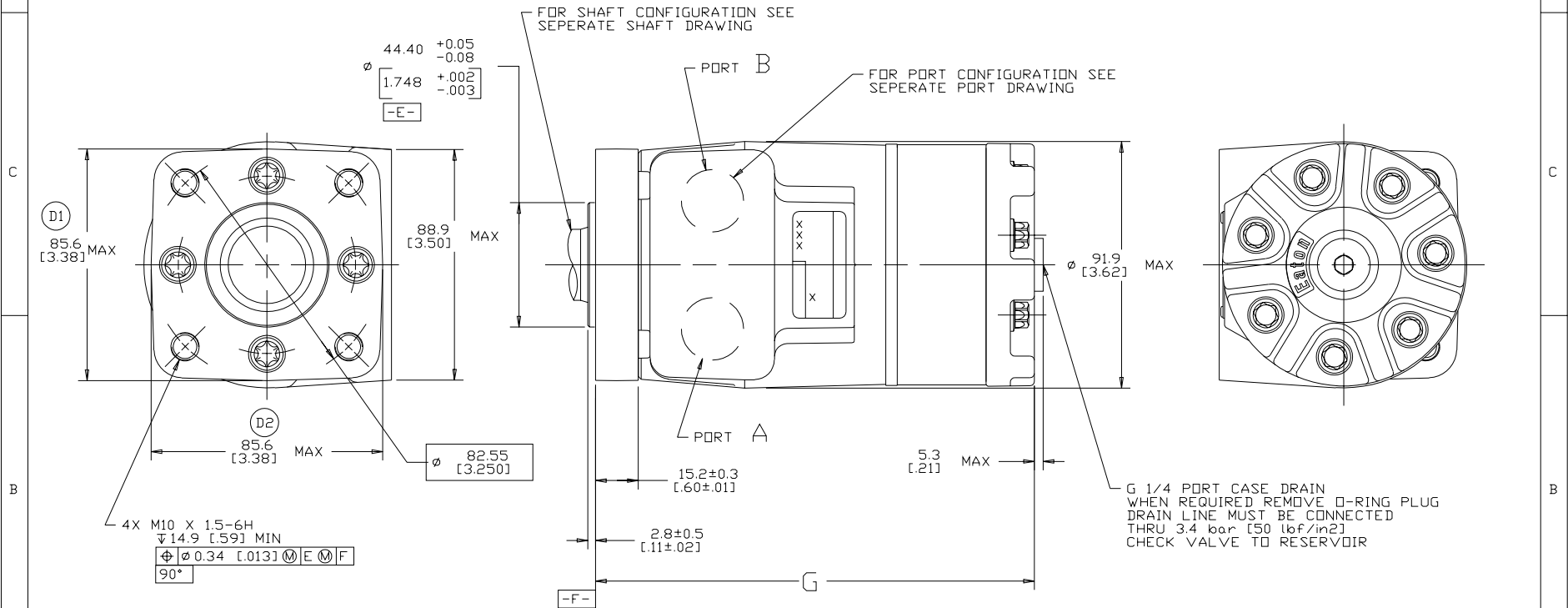


DISPL CODE	G	MAX
022	132.2	[5.21]
030	134.6	[5.30]
040	137.6	[5.42]
049	140.2	[5.52]
062	144.2	[5.68]
080	149.6	[5.89]
096	154.4	[6.08]
119	161.2	[6.35]
149	170.2	[6.70]
187	181.6	[7.15]
226	193.3	[7.61]

REV	DESCRIPTION	BY	DATE	ECN
A	ENGINEERING RELEASE	RAF	2-8-94	M11208
B	(2B) DIM 5.3 [.21] MAX WAS 3.8 [.15] MAX	JMM	10-18-94	25844
C	-1<(3C) 88.9 [3.50] MAX WAS 84.6 [3.33] MAX -2<(2C) Ø 91.9 [3.62] MAX WAS Ø 88.8 [3.49] MAX	JMM	10-26-94	26147
D	-1<(4C) WAS 83.4 [3.28] MAX. -2<(4B) WAS 83.4 [3.28] MAX.	AAK	04-07-04	46856
E	-1<(4D) UPDATED TABLE FOR DISPL CODE -2<(4A) NOTE 2 MOUNTING FLANGE WAS "E"	PM	03-27-07	0004355
F	<4A> NOTE 3 WAS CASE DRAIN : 2....	SSP	12-26-15	0068068



NOTE

- 1 ROTATION STANDARD WHEN FACING SHAFT END OF MOTOR SHAFT TO ROTATE CLOCKWISE WHEN PORT "A" IS PRESSURIZED COUNTERCLOCKWISE WHEN PORT "B" IS PRESSURIZED

REVERSE WHEN FACING SHAFT END OF MOTOR, SHAFT TO ROTATE CLOCKWISE WHEN PORT "B" IS PRESSURIZED COUNTERCLOCKWISE WHEN PORT "A" IS PRESSURIZED
- 2 MOUNTING FLANGE FA = STANDARD, 4 BOLT: Ø 44.4 [1.75] X 3.0 [.12] PILOT M10 X 1.5 THREADED HOLES ON Ø 82.6 [3.25] BOLT CIRCLE
- 3 CASE DRAIN 02 = G 1/4 PORT (END CAP)

UNLESS OTHERWISE SPECIFIED ALL DIMENSIONS ARE IN INCHES <input type="checkbox"/> MILLIMETERS (INCHES) <input checked="" type="checkbox"/>	DRAWING BASED ON ANSI Y14.5M-1982	
	NOTICE TO PERSONS RECEIVING THIS DRAWING AND / OR TECHNICAL INFORMATION EATON Eaton Corporation claims proprietary rights in the information disclosed hereon. This document is issued in confidence and is not to be reproduced or used to manufacture anything shown herein without the written permission of the Eaton Corporation. Eaton Corporation Hydraulics Division 1515 Highway 5 Eden Prairie, MN 55344	
TOLERANCES X ± ---- XX ± ---- XXX ± ---- < ± ----	DRAWN BY/DATE RAF 2/4/94 CHECKED SDR 2/23/94	MATERIAL/HEAT TREAT
UNSPECIFIED RADII ARE ---- UNSPECIFIED DRAFT ANGLES ARE ----	ENGRG BY/DATE RVA 3/3/94 METALLURGY BY/DATE ----	TITLE T MOTOR INSTALLATION
DRAWING FORMAT CADD <input checked="" type="checkbox"/> MANUAL <input type="checkbox"/>	THIRD ANGLE PROJECTION DO NOT SCALE	MICROINCHES <input type="checkbox"/> MICROMETERS (MICROINCHES) <input checked="" type="checkbox"/> NUMBER A-821-011 SCALE 1/1 SHEET 1 OF 1