

EN#-F26566

TECHNICAL CENTER
MAUMEE, OHIO, U.S.A.

EATON

MICROFILM

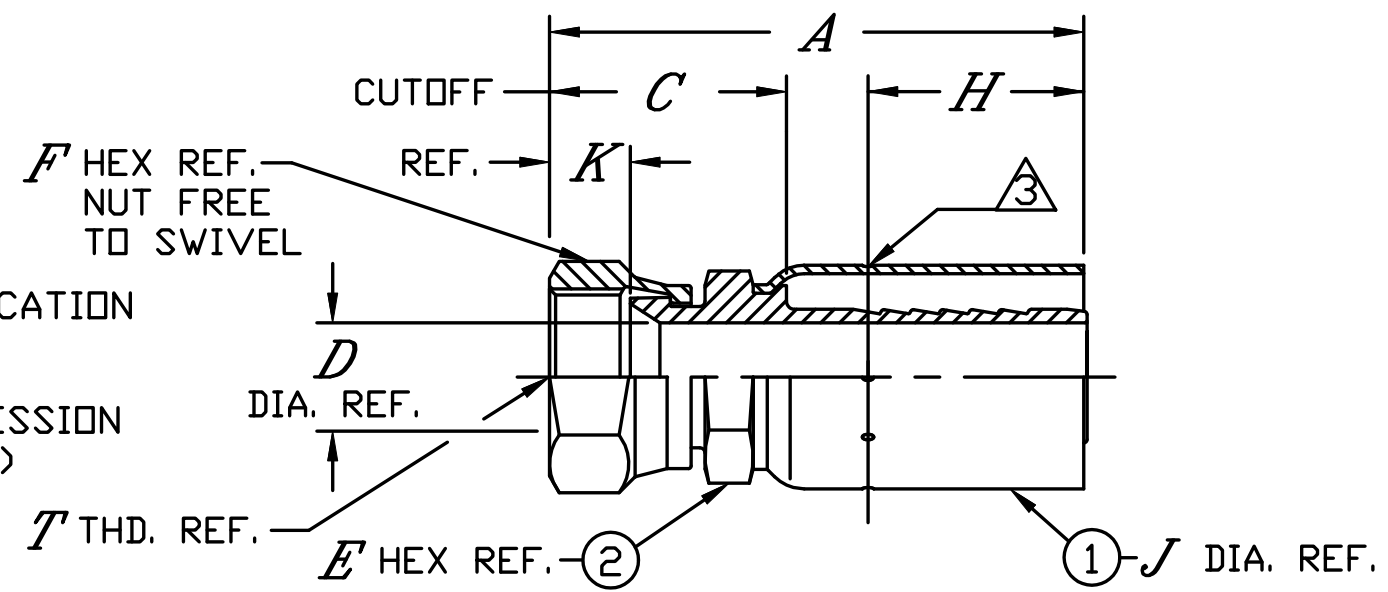
CANADA
VINITA
ANTWERP
COL. CITY
BRENTWOOD
KENNESAW

NOTICE TO PERSONS RECEIVING THIS DRAWING AND / OR TECHNICAL INFORMATION
Eaton Corporation claims proprietary rights in the information disclosed hereon. This document is issued in confidence and is not to be reproduced or used to manufacture anything shown hereon without the written permission of the Eaton Corporation.

DWG. NO. **00U-600**

SHEET	LTR.	DESCRIPTION OF REVISIONS	CHKD.	DCN NO.	CLASS	DATE
-------	------	--------------------------	-------	---------	-------	------

- NOTE :
1. MARKED PER PS-8
 2. FOR CRIMPING SPECIFICATION SEE PS-5060.
- ③ CRIMP LOCATION IMPRESSION MARK (6 OR 8 PLACES)



PART NUMBER	REV. LTR.	T THREAD	ITEM 1 COLLAR	ITEM 2 INSERT ASSEMBLY	A	C	D	E	F	H	J	K
10U-608	-	3/4-16UN-2B	10410U-C00	10410U-B00608	3.48	1.55	.39	.94	.88	1.53	1.19	.43
10U-610	-	7/8-14UN-2B	10410U-C00	10410U-B00610	3.53	1.60	.48	.94	1.00	1.53	1.19	.50
10U-612	-	1 1/16-12UN-2B	10410U-C00	10410U-B00612	3.64	1.71	.48	1.00	1.25	1.53	1.19	.56
12U-610	-	7/8-14UN-2B	10412U-C00	10412U-B00610	3.75	1.60	.48	1.00	1.00	1.62	1.40	.50
12U-612	-	1 1/16-12UN-2B	10412U-C00	10412U-B00612	3.86	1.71	.61	1.00	1.25	1.62	1.40	.56
12U-614	-	1 3/16-12UN-2B	10412U-C00	10412U-B00614	3.88	1.73	.61	1.12	1.38	1.62	1.40	.58
12U-616	-	1 5/16-12UN-2B	10412U-C00	10412U-B00616	4.07	1.92	.61	1.25	1.50	1.62	1.40	.61
16U-612	-	1 1/16-12UN-2B	430-16011	43016E-B00612	4.37	2.17	.61	1.25	1.25	1.50	1.68	.56
16U-614	-	1 3/16-12UN-2B	430-16011	43016E-B00614	4.35	2.15	.72	1.25	1.38	1.50	1.68	.58
16U-616	-	1 5/16-12UN-2B	430-16011	43016E-B00616	4.46	2.26	.81	1.25	1.50	1.50	1.68	.60
20U-620	-	1 5/8-12UN-2B	430-20011	43020E-B00620	4.90	2.60	1.02	1.69	2.00	1.74	2.10	.64
16U-620	-	1 5/8-12UN-2B	430-16011	43016E-B00620	4.30	2.20	.81	1.62	2.00	1.50	1.68	.64

REF. NO.	MATERIAL SPECIFICATION	QUAN.	ITEM NO.	PART NUMBER	PART NAME
NEXT ASSY./USED ON	STEEL - ZINC PLATED	DRAWN BY	DATE	CHECKED BY	DATE
UNLESS OTHERWISE SPECIFIED TOLERANCE ON: ANGLES ± 1° DECIMALS .X ±.04 .XX ±.02 .XXX ±.010 BREAK SHARP EDGES .005/.010 REMOVE ALL BURRS THREAD DIMENSIONS AND DESIGNATIONS PER ANSI B1 STANDARDS ALL MACHINING SURFACES 125 MU. IN. MAX. WEATHERHEAD STANDARD D-1000	HEAT TREAT/HARDNESS	KBM	09/16/04	BAT	9/21/04
DIMENSIONS ARE IN INCHES DO NOT SCALE DRAWING	PLATING/COATING	APPROVED FOR DEVELOPMENT		TITLE: END ASSEMBLY	
		APPROVED FOR PRODUCTION		SAE 37° FEMALE SWIVEL	
		RELEASED FOR PRODUCTION		SIZE B	DWG. NO. 00U-600
				SALES ORDER	SCALE NONE SHEET 2 OF 2