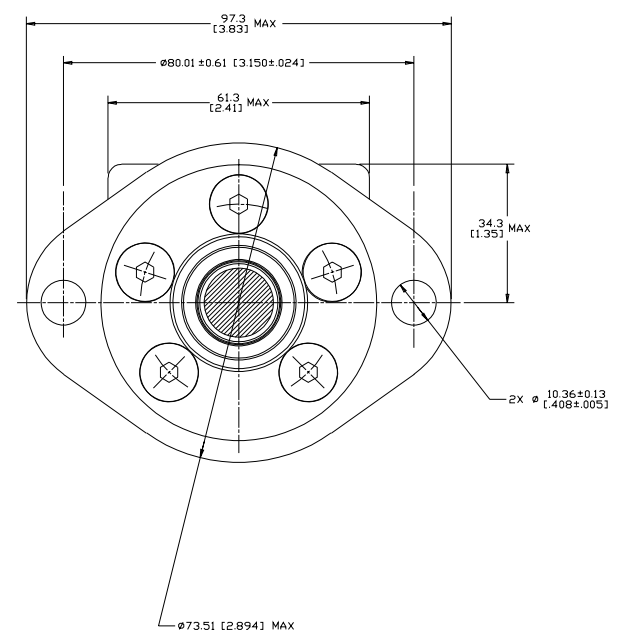
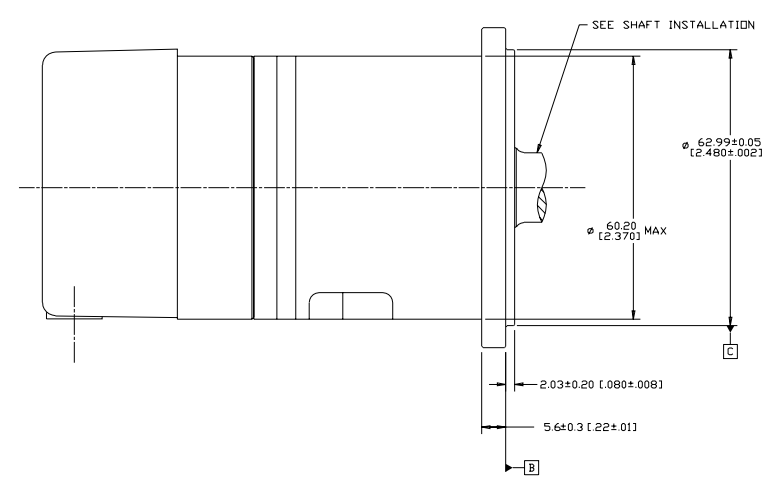
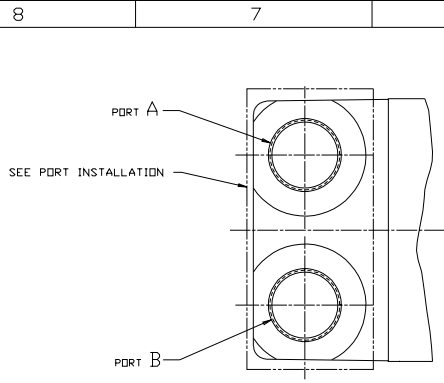


REV	DESCRIPTION	BY	DATE	ECN
A	ENGINEERING RELEASE	RAF	1-23-94	24688
B	(7B) REVISED PICTORIALY, ADDED CASE DRAIN	RAF	1-23-94	27675
C	(1X6B) REVISED PICTORIALY, -2X(C) 61.3 (2.41) WAS 60.5 (2.38) -3)DRAWING UPDATED TO ASME Y14.5M-1994 STANDARD	CSG	9-22-13	M90272



NOTE

1 ROTATION:
 0 = STANDARD: WHEN FACING SHAFT END OF MOTOR SHAFT TO ROTATE CLOCKWISE WHEN PORT "A" IS PRESSURIZED COUNTERCLOCKWISE WHEN PORT "B" IS PRESSURIZED
 1 = REVERSE: WHEN FACING SHAFT END OF MOTOR SHAFT TO ROTATE COUNTERCLOCKWISE WHEN PORT "B" IS PRESSURIZED CLOCKWISE WHEN PORT "A" IS PRESSURIZED

2 MOUNTING FLANGE:
 C = 2 BOLT: $\phi 62.99$ [2.480] X 2.0 [0.08] PILD $\phi 10.36$ [4.08] MOUNTING HOLES ON $\phi 80.01$ [3.150] BOLT CIRCLE

REVIEWED FOR CLASSIFICATION PER ESP -042

DRAWING BASED ON ASME Y14.5M-1994

UNLESS OTHERWISE SPECIFIED ALL DIMENSIONS ARE IN MILLIMETERS

TOLERANCES:
 FRACTIONS: 1/27/94
 DECIMALS: 2-9-96
 ANGLES: 2-9-96

MATERIAL HEAT TREAT: J2 MOTOR INSTALLATION

UNLESS OTHERWISE SPECIFIED ALL DIMENSIONS ARE IN MILLIMETERS

DRAWING TITLE: A-817-005

D SIZE: THIRD ANGLE PROJECTION

SCALE: 2/1

SHEET 1 OF 1