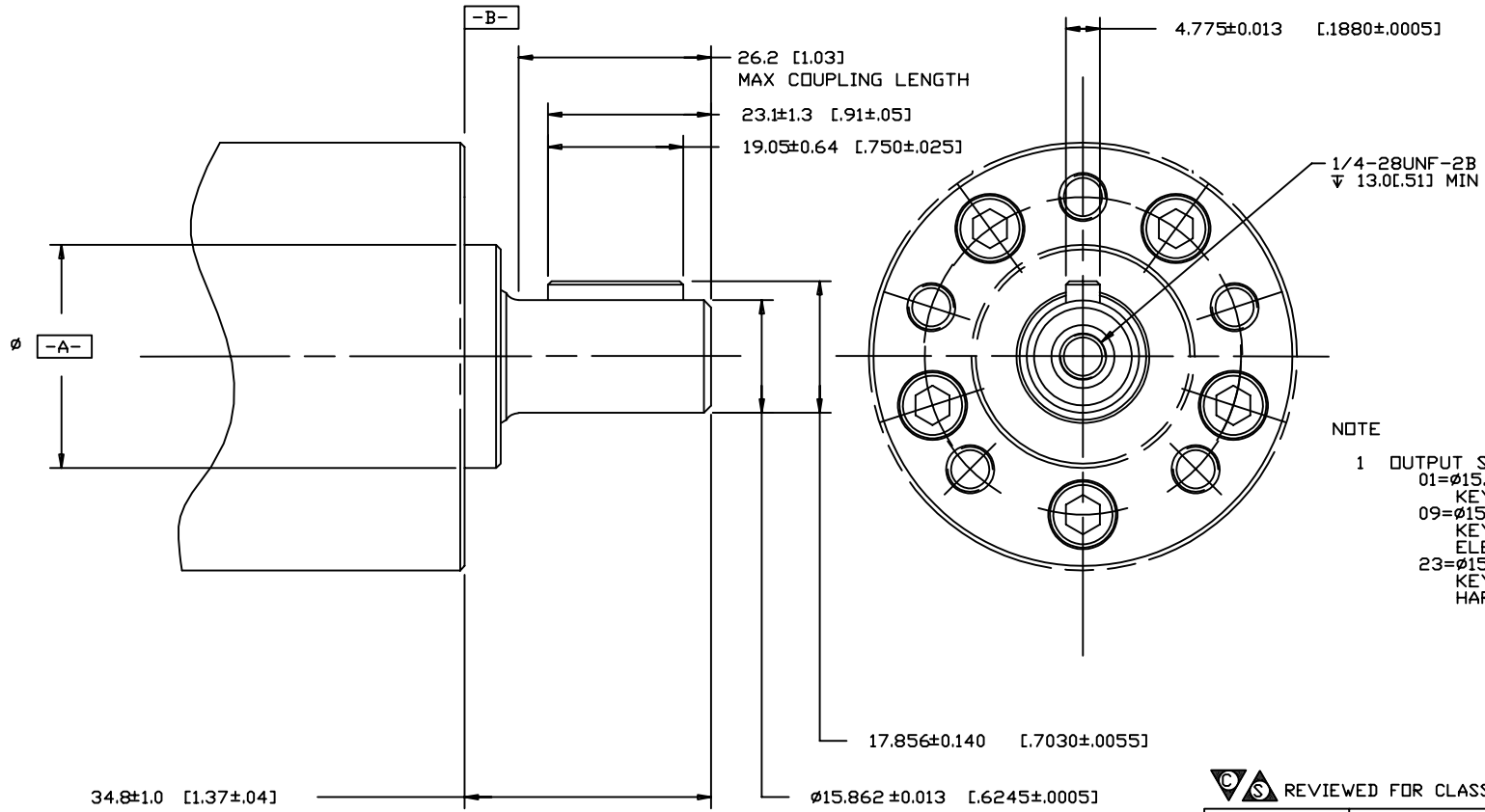


REV	DESCRIPTION	BY	CHK	DATE	ECN
A	RELEASE FOR SAMPLES AND ESTIMATE	MA		11-13-90	X4977
C	1)REVISED 2)ENGINEERING RELEASE	MA		7-22-91	20855
D	(2C) ▽ 13.0(.51) WAS ▽ 9.9(.39)	AGJ		5-5-92	17165
E	(2B) ADDED 09=Ø15.88 [.625]..... TO NOTE 1	GCB		10-8-92	23024
F	(4A)34.8±0.8 [.137±.03] WAS 35.1±1.0 [.138±.04]	JSB		3-27-08	ECR-8713
G	-1)(1B)ADDED OUTPUT SHAFT '23' -2)UPDATED 'DRAWING PROPRIETARY NOTE' -3)(1B)DESCRIPTION OF OUTPUT SHAFT 09 WAS '...CORROSION RESISTANT'	JSB		5-8-08	M72778
H	UPDATED TO CURRENT STANDARD	SSD		08-16-10	M79810



NOTE  
 1 OUTPUT SHAFT:  
 01=Ø15.88[.625] STRAIGHT WITH STRAIGHT KEY AND 1/4-28 THREADED HOLE  
 09=Ø15.88[.625] STRAIGHT WITH STRAIGHT KEY AND 1/4-28 THREADED HOLE, ELECTROLESS NICKEL PLATED  
 23=Ø15.88[.625] STRAIGHT WITH STRAIGHT KEY AND 1/4-28 THREADED HOLE, HARD CHROME PLATED

⊙	Ø .25	[.010]	A
⊥	.08	[.003]	B

REVIEWED FOR CLASSIFICATION PER ESP-042

DRAWING BASED ON ANSI Y14.5M-1982

EATON CORPORATION - CONFIDENTIAL AND PROPRIETARY  
 NOTICE TO PERSONS RECEIVING THIS DRAWING  
 AND / OR TECHNICAL INFORMATION

THIS DOCUMENT, INCLUDING THE DRAWING AND INFORMATION CONTAINED THEREON, IS CONFIDENTIAL AND IS THE EXCLUSIVE PROPERTY OF EATON CORPORATION, AND IS HEREBY ON LOAN AND SUBJECT TO RECALL BY EATON AT ANY TIME BY TAKING POSSESSION OF THIS DOCUMENT. THE RECIPIENT ACKNOWLEDGES AND AGREES THAT THIS DOCUMENT CANNOT BE USED IN ANY MANNER ADVERSE TO THE INTERESTS OF EATON, AND THAT NO PORTION OF THIS DOCUMENT MAY BE COPIED OR OTHERWISE REPRODUCED WITHOUT THE WRITTEN CONSENT OF EATON. IN THE CASE OF CONFLICTING CONFIDENTIALITY PROVISIONS, THIS NOTICE SHALL GOVERN THE STATUS OF THIS DOCUMENT. COPYRIGHT 2008 EATON CORPORATION - ALL RIGHTS RESERVED.

**EATON**  
 Powering Business Worldwide  
 Eaton Hydraulics Inc.  
 14615 Lone Oak Road  
 Eden Prairie, MN 55344  
 USA

DRAWN BY/DATE MA 10-1-90	MATERIAL/HEAT TREAT
CHECKED BY/DATE KQ 12-14-90	
ENGR BY/DATE DJ 12-14-90	TITLE
METALLURGY BY/DATE	J2 MOTOR SHAFT INSTALLATION
UNSPECIFIED RADI ARE	
UNSPECIFIED DRAFT ANGLES ARE	
THIRD ANGLE PROJECTION	
C SIZE	DO NOT SCALE

HIDRINCHES (DECIDRINCHES)	NUMBER
THIRD ANGLE PROJECTION	A-270-001
METALLURGY BY/DATE	SCALE 2/1
	SHEET 1 OF 1