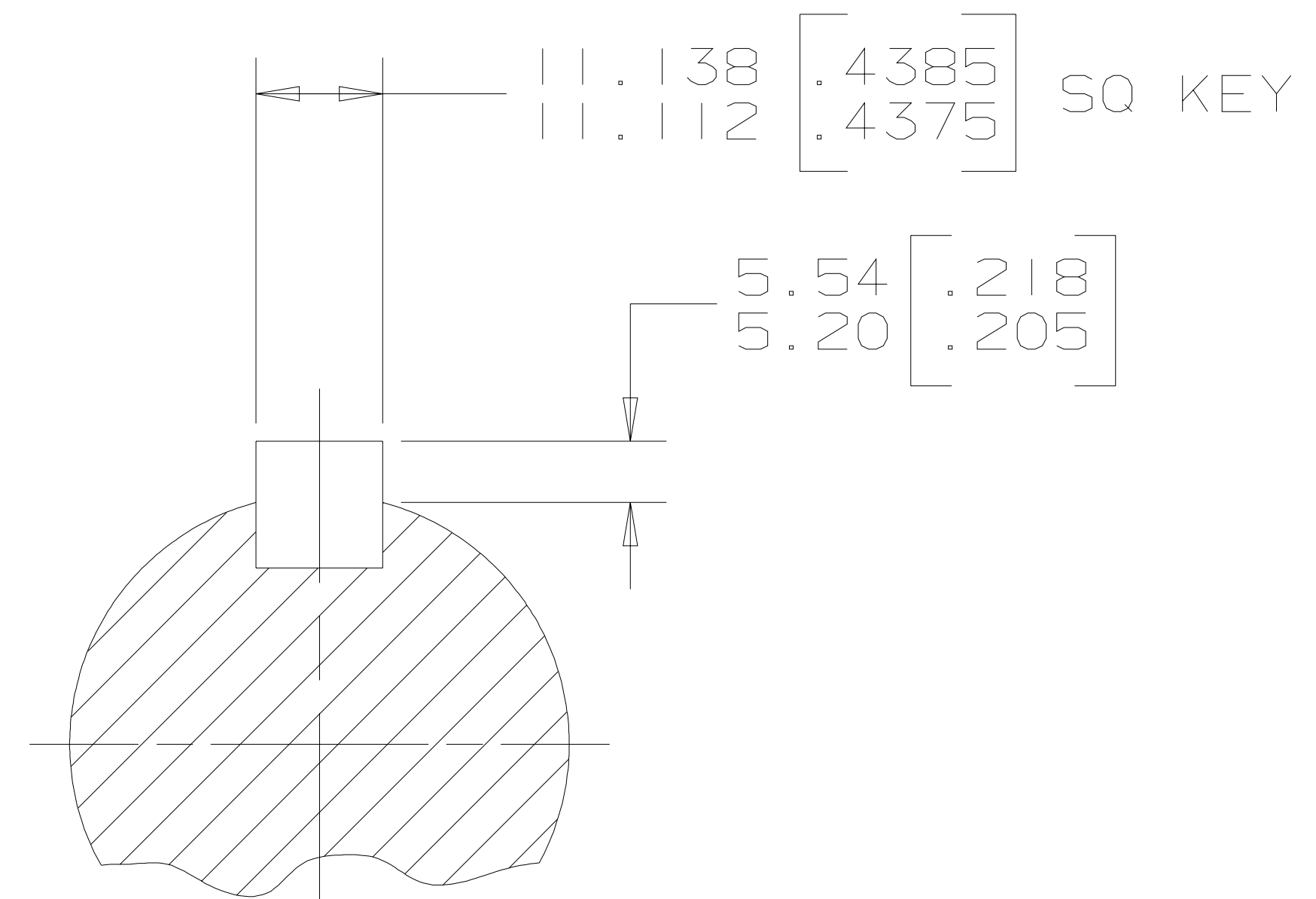
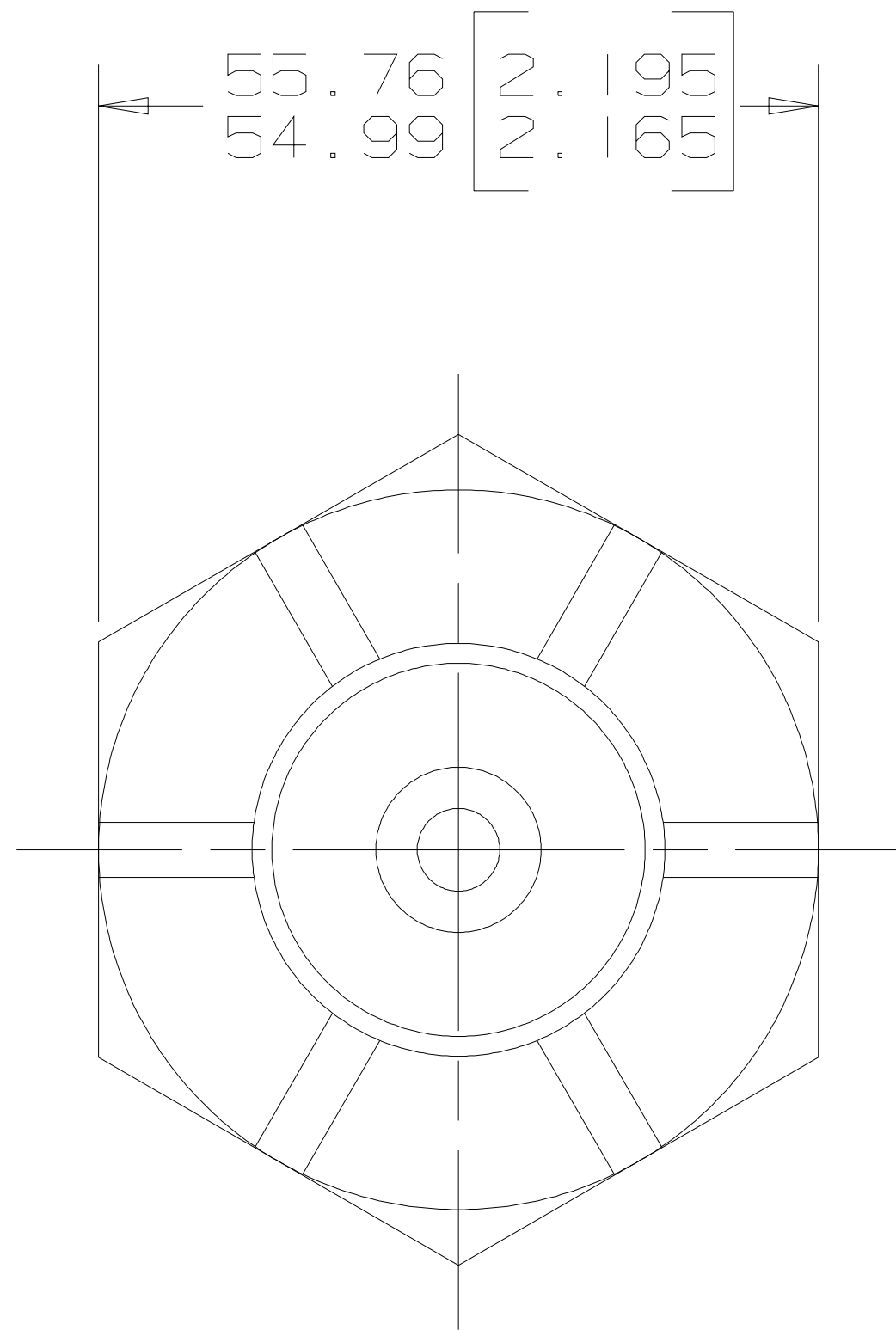
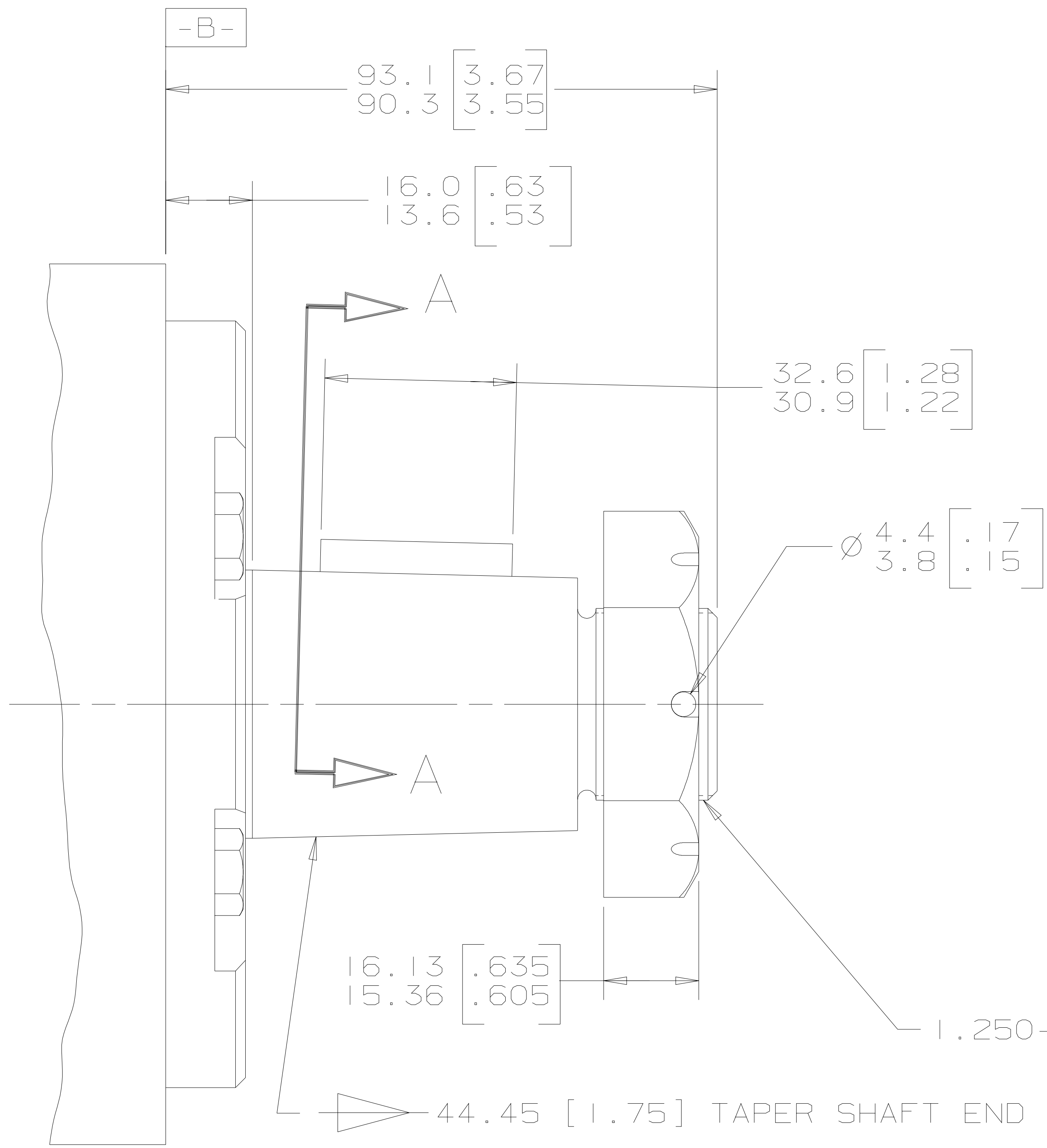


REV	DESCRIPTION	BY	CHK	DATE	ECN
A	ENGINEERING RELEASE	RAF		8-30-95	MI 4044
B	ADDED AND 16 TO NOTE 2	GCB		4-15-97	MI 7159
C	-1) MOUNTING TYPE WAS 'B' AND 'E' -2) OUTPUT SHAFT '08' WAS '16'	AMM		12-11-06	0001664



SECTION A-A

G K S

1.498-1.502:12 PER SAE J501 EXCEPT AS SPECIFIED

- NOTE
- 1 MOUNTING TYPE: OPTION AB AND AE
 - 2 OUTPUT SHAFT: OPTION 02 AND 08

UNLESS OTHERWISE SPECIFIED ALL DIMENSIONS ARE IN INCHES <input type="checkbox"/> MILLIMETERS [INCHES] <input checked="" type="checkbox"/>	DRAWING BASED ON ANSI Y14.5M-1982	
	THE REPRODUCTION, DISTRIBUTION, AND UTILIZATION OF THIS DOCUMENT, AS WELL AS THE COMMUNICATION OF ITS CONTENTS TO OTHERS WITHOUT EXPLICIT AUTHORIZATION IS PROHIBITED. OFFENDERS WILL BE HELD LIABLE FOR THE PAYMENT OF DAMAGES. ALL RIGHTS RESERVED IN THE EVENT OF THE GRANT OF A PATENT, UTILITY MODEL, OR DESIGN. (PER ISO 16016)	
TOLERANCES .X ± ---- .XX ± REF .XXX ± ONLY < ± ----	DRAWN BY/DATE RAF 9-7-95 CHECKED BY/DATE SDR 9-18-95 ENGRG BY/DATE WCW 9-18-95 METALLURGY BY/DATE ----	MATERIAL/HEAT TREAT TITLE 6000 SERIES MOTOR SHAFT INSTALLATION
UNSPECIFIED RADII ARE ---- UNSPECIFIED DRAFT ANGLES ARE ----	THIRD ANGLE PROJECTION DO NOT SCALE	MICROINCHES <input type="checkbox"/> MICROMETERS [MICROINCHES] <input type="checkbox"/> ARITHMETICAL AVERAGE <input checked="" type="checkbox"/>
DRAWING FORMAT CADD <input checked="" type="checkbox"/> MANUAL <input type="checkbox"/>	NUMBER A-1020-002 SCALE 1/1 SHEET 1 OF 1	

