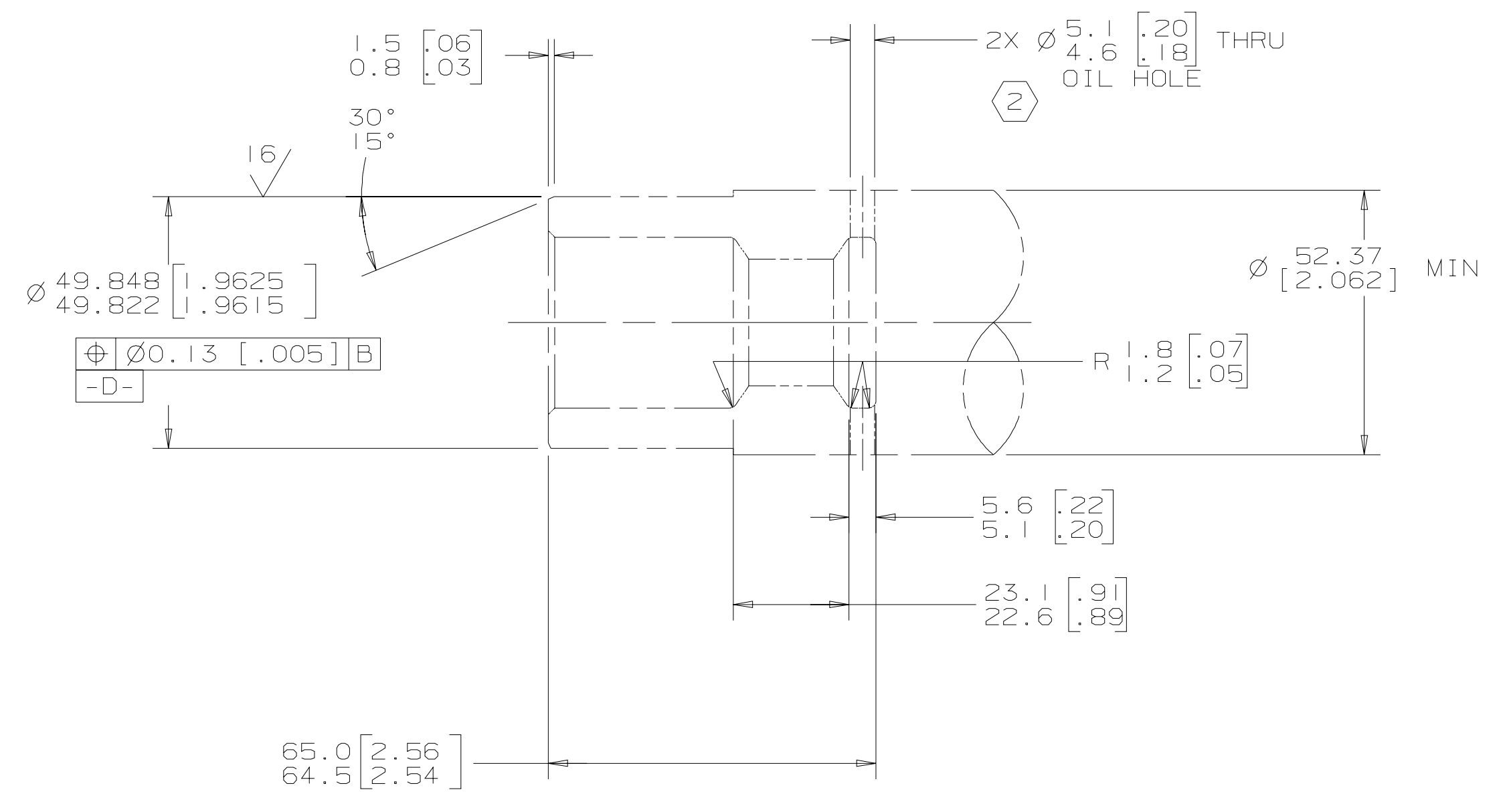
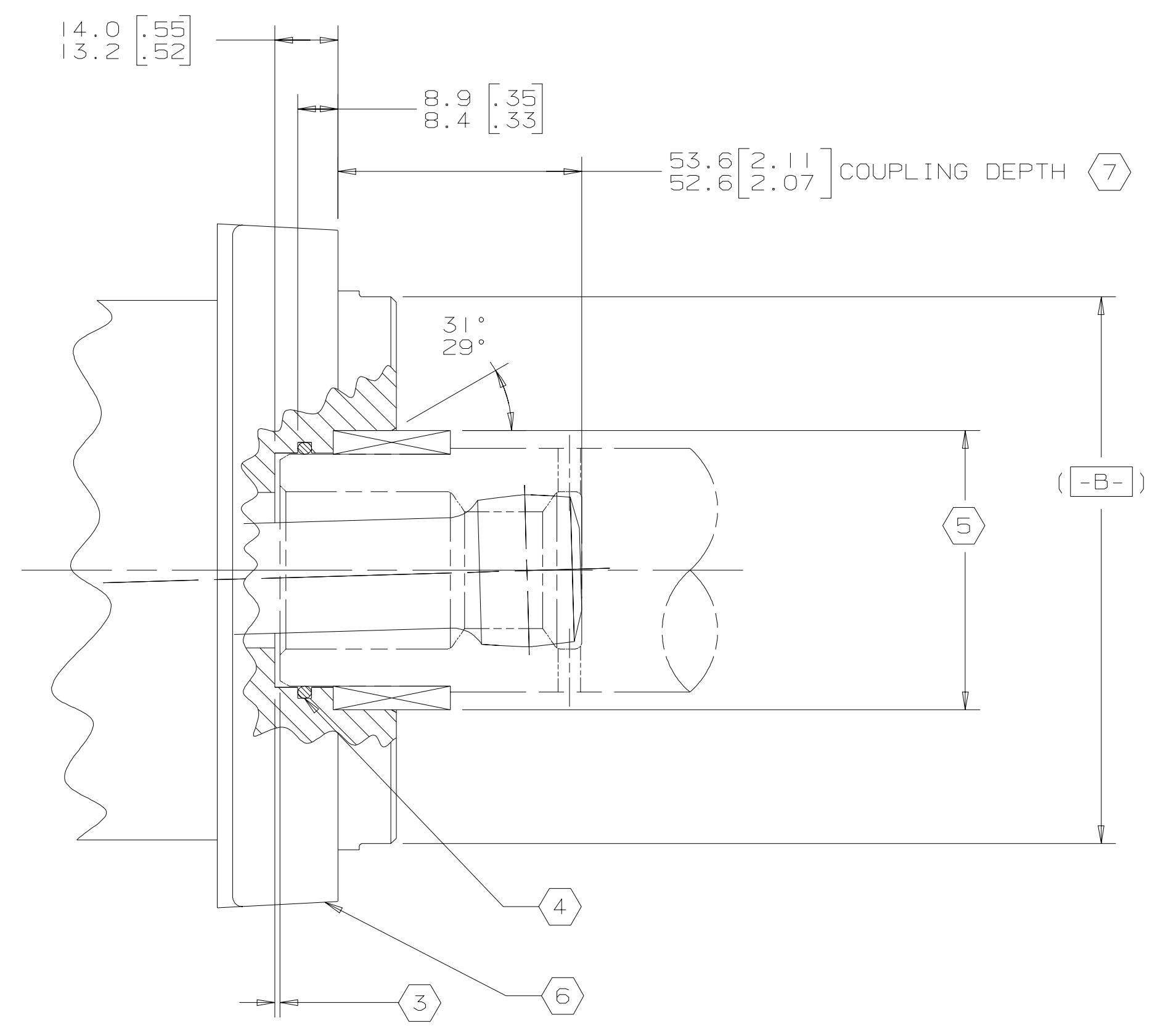


SYM	REVISION	BY	DATE	ECN
A	ENGINEERING RELEASE	SDR	2-8-92	21551
B	(5A) REVISED NOTE (7)	AGJ	9-30-03	45274
C	-1) (6D) 53.6/52.6 [2.11/2.07] WAS 52.8/51.8 [2.08/2.04] -2) (6A) NOTE (7) WAS 52.8 [2.08]...	AAK	11-15-06	0001154



INTERNAL INVOLUTE SPLINE DATA	
SPLINE PITCH	10/20
PRESSURE ANGLE	30°
NUMBER OF TEETH	12
CLASS OF FIT - REF.	5
TYPE OF FIT	SIDE
PITCH DIAMETER - REF.	30.480000 [1.2000000] $\sqrt{0.20 [0.008] D}$
BASE DIAMETER - REF.	26.396455 [1.0392305]
MAJOR DIAMETER	33.43 [1.316] MAX 33.23 [1.308] MIN
MINOR DIAMETER	28.40-28.58 [1.118-1.125]
FORM DIAMETER, MIN.	32.59 [1.283]
FILLET RADIUS	0.63-0.76 [.025-.030]
TIP RADIUS	0.26-0.51 [.010-.020]
FINISH	(63)
INVOLUTE PROFILE VARIATION	+0.000 -0.025 [+0.0000 -0.0010]
TOTAL INDEX VARIATION	0.038 [.0015]
LEAD VARIATION	0.013 [.0005]
CIRCULAR SPACE WIDTH:	
MAXIMUM ACTUAL	5.045 [.1986]
MINIMUM EFFECTIVE	4.995 [.1951]
MAXIMUM EFFECTIVE - REF.	5.009 [.1972]
MINIMUM ACTUAL - REF.	4.986 [.1963]
DIMENSION BETWEEN TWO PINS - REF.	22.783-22.929 [.8970-.9027]
PIN DIAMETER	5.334 [.2100] - NOTE: PIN TO HAVE 3.73 [.147] WIDE FLAT FOR ROOT CLEARANCE

INSTALLATION INFORMATION

- 1 INTERNAL SPLINE IN MATING PART TO BE PER SPLINE DATA SPEC. MATERIAL TO BE ASTM A304, 8620H VACUUM DEGASSED ALLOY STEEL CARBURIZE TO A HARDNESS OF 59-62 Rc WITH CASE DEPTH (TO 50 Rc) 0.76-1.02 [.030-.040] DIMENSIONS APPLY AFTER HEAT TREAT
- 2 MATING PART TO HAVE CRITICAL DIMENSIONS AS SHOWN OIL HOLES MUST BE PROVIDED AND OPEN FOR PROPER CIRCULATION
- 3 SOME MEANS OF MAINTAINING CLEARANCE BETWEEN SHAFT AND MOUNTING FLANGE MUST BE PROVIDED
- 4 SEAL IS TO BE FURNISHED WITH MOTOR FOR PROPER OIL CIRCULATION THRU SPLINES
- 5 COUNTERBORE DESIGNED TO ADAPT A STANDARD SLEEVE BEARING 50.010-50.040 [1.9689-1.9700] I.D. BY 60.050-60.080 [2.3642-2.3653] OILITE BRONZE SLEEVE BEARING SOURCE: BEARING SALES CORPORATION PART NUMBER 60226
- 6 SIMILAR TO SAE "C" FOUR BOLT FLANGE
- 7 53.6 [2.11] MAX DIMENSION TO BE MAINTAINED WHEN ASSEMBLING SHIPPING AND INSTALLING UNIT TO INSURE VALVE DRIVE ENGAGEMENT WITH VALVE.

UNLESS OTHERWISE SPECIFIED ALL DIMENSIONS ARE IN		DRAWING BASED ON ANSI Y14.5M-1982	
INCHES <input type="checkbox"/>	MILLIMETERS <input checked="" type="checkbox"/>	NOTICE TO PERSONS RECEIVING THIS DRAWING AND / OR TECHNICAL INFORMATION	
TOLERANCES		Eaton Corporation claims proprietary rights in the information disclosed herein. This document is issued in confidence and is not to be reproduced or used to manufacture anything shown herein without the written permission of the Eaton Corporation.	
.X ----	+	DRAWN BY/DATE SDR 6-26-92	MATERIAL/HEAT TREAT
.XX +REF	-	CHECKED BY/DATE KJR 8-4-92	
.XXX +ONLY	±	ENGR. BY/DATE RVA 8-4-92	TITLE
UNSPECIFIED RADI ARE	----	METALLURGY BY/DATE	4000 SERIES MOTOR COUPLING INSTALLATION
UNSPECIFIED DRAFT ANGLES ARE	----	THIRD ANGLE PROJECTION	NUMBER
DRAWING FORMAT CADD <input checked="" type="checkbox"/> MANUAL <input type="checkbox"/>	DO NOT SCALE	ARITHMETICAL AVERAGE	A-557
		SCALE 1/1	SHEET 1 OF 1

GSK