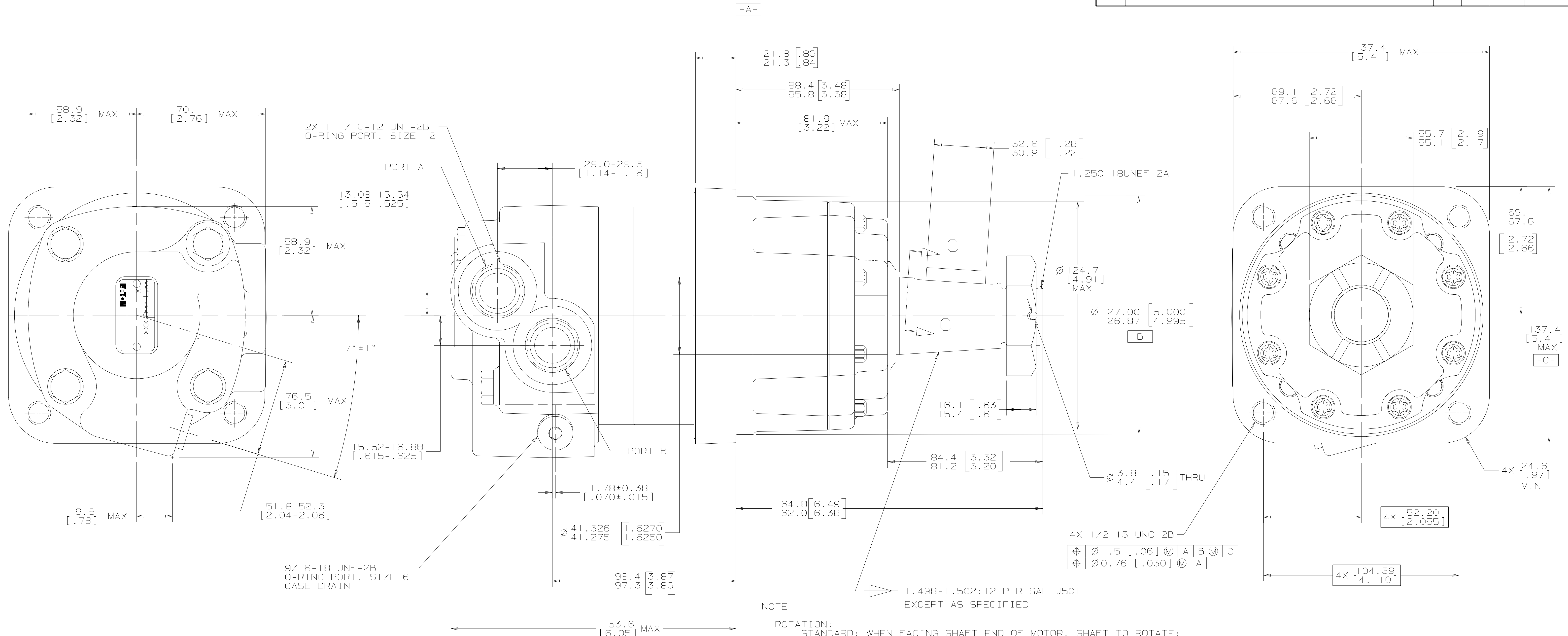


REV	DESCRIPTION	BY	CHK	DATE	ECN
A	ENGINEERING RELEASE	VVB		6-19-06	M65540A
B	-1) (5A) DISP WAS "15" -2) MOUNTING TYPE WAS "D" -3) PORT TYPE WAS "G" -4) ADDED CASE FLOW OPTION	AMM		1-24-07	0002527



NOTE
 1 ROTATION:
 STANDARD: WHEN FACING SHAFT END OF MOTOR, SHAFT TO ROTATE;
 CLOCKWISE WHEN PORT "A" IS PRESSURIZED
 COUNTERCLOCKWISE WHEN PORT "B" IS PRESSURIZED

REVERSE: WHEN FACING SHAFT END OF MOTOR, SHAFT TO ROTATE;
 CLOCKWISE WHEN PORT "B" IS PRESSURIZED,
 COUNTERCLOCKWISE WHEN PORT "A" IS PRESSURIZED

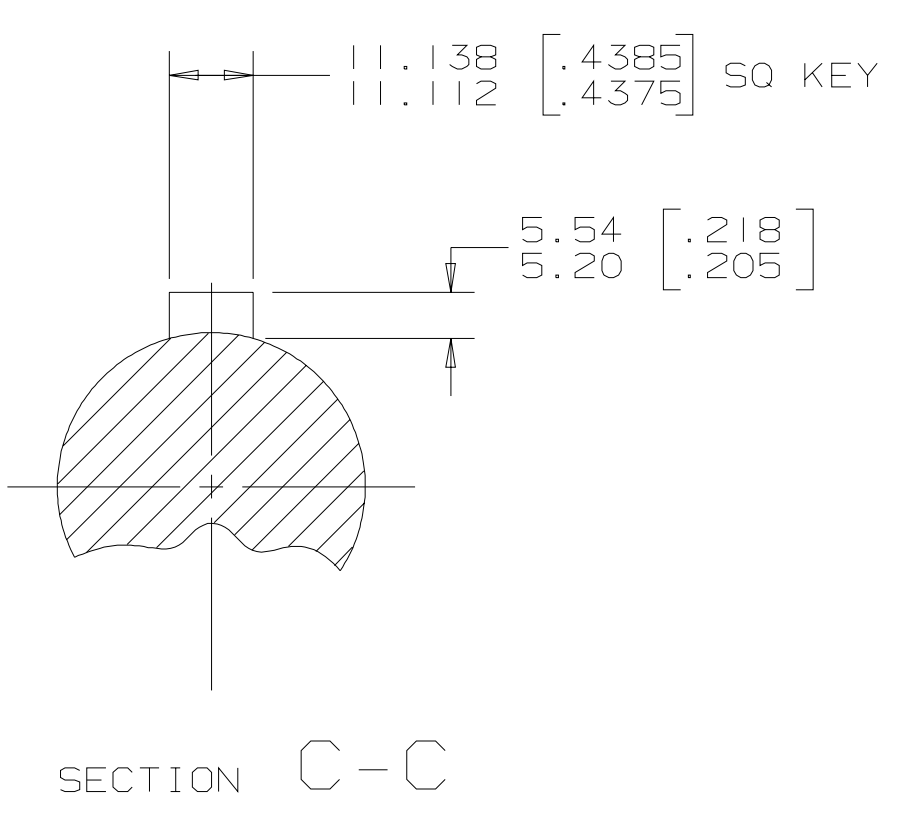
2 DISPLACEMENT: 150
 246.3 cm³/r [15.03 in³/r]

3 MOUNTING TYPE: AD
 WHEEL, 4 BOLT: 127.00 [5.000] PILOT DIA.
 .500-13 UNC-2B THREADED HOLES ON 147.62 [5.812] DIA. BOLT CIRCLE

4 OUTPUT SHAFT: 02
 Ø 41.28 [1.625] TAPERED WITH 11.112 [.4375] SQ X 31.75 [1.250] STRAIGHT KEY, 1 1/4-18 UNEF-2A THREAD WITH SLOTTED HEX NUT

5 PORTS: AB
 1.0625-12 UN-2B SAE O-RING PORTS - STAGGERED PORTS

6 CASE FLOW: 01
 .5625-18 UNF-2B SAE O-RING PORT WITH SHUTTLE VALVE



UNLESS OTHERWISE SPECIFIED ALL DIMENSIONS ARE IN		DRAWING BASED ON ANSI Y14.5M-1982	
INCHES	<input type="checkbox"/>	NOTICE TO PERSONS RECEIVING THIS DRAWING AND / OR TECHNICAL INFORMATION	
MILLIMETERS	<input checked="" type="checkbox"/>	Eaton Corporation claims proprietary rights in the information disclosed herein. This document is issued in confidence and is not to be reproduced or used to manufacture anything shown herein without the written permission of the Eaton Corporation.	
TOLERANCES		MATERIAL/HEAT TREAT	
.X	----	DRAWN BY/DATE VVB 6-26-06	
.XX	+REF	CHECKED AAK 6-26-06	
.XXX	+ONLY	ENGR. BY/DATE JML 6-26-06	TITLE
<	----	METALLURGY BY/DATE	4000 SERIES MOTOR INSTALLATION
UNSPECIFIED RADI	ARE	NUMBER	
UNSPECIFIED DRAFT ANGLES	ARE	110-1220-006	
DRAWING FORMAT	THIRD ANGLE PROJECTION	SCALE	1/1
CADD	DO NOT SCALE	ARTHEMATICAL AVERAGE	SHEET 1 OF 1

