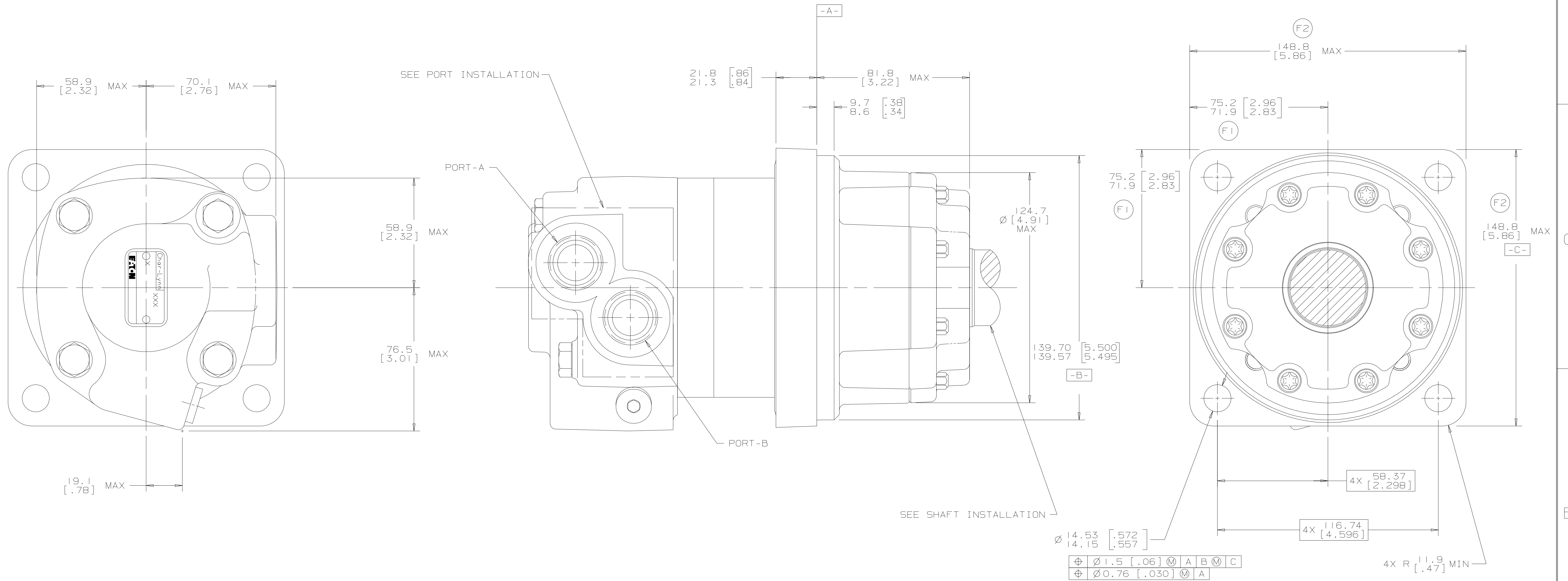


SYM	REVISION	BY	DATE	ECN
A	ENGINEERING RELEASE	SDR	2-8-92	21551
B	-1)(3C)ADD Ø[4.91]MAX -2)REVISED PICTORIALY	KJR	3-3-93	23702
C	(7B)REMOVED 18°/16°	AGJ	11-22-96	27499
D	(5C)(7C)REVISED PICTORIALY	RAF	2-5-97	29191
E	(6A)MOUNTING TYPE WAS "C"	SSD	1-24-07	0002527
F	-1)(2C)(3C)WAS 73.9 [2.91] 72.4 [2.85] -2)(2D)(1C)WAS 147.1 [5.79]	AAB	3-04-09	0014997



NOTE

1 ROTATION:  
 STANDARD: WHEN FACING SHAFT END OF MOTOR, SHAFT TO ROTATE:  
 CLOCKWISE WHEN PORT "A" IS PRESSURIZED  
 COUNTERCLOCKWISE WHEN PORT "B" IS PRESSURIZED

REVERSE: WHEN FACING SHAFT END OF MOTOR, SHAFT TO ROTATE:  
 CLOCKWISE WHEN PORT "B" IS PRESSURIZED.  
 COUNTERCLOCKWISE WHEN PORT "A" IS PRESSURIZED

2 MOUNTING TYPE: AC  
 WHEEL, 4 BOLT: 139.70 [5.500] PILOT DIA.  
 14.27 [.562] DIA. HOLES ON 165.10 [6.500]  
 DIA. BOLT CIRCLE.

REVIEWED FOR CLASSIFICATION PER ESP-042

UNLESS OTHERWISE SPECIFIED ALL DIMENSIONS ARE IN INCHES		DRAWING BASED ON ANSI Y14.5M-1982	
MILL/METERS [INCHES]		EATON CORPORATION - CONFIDENTIAL AND PROPRIETARY NOTICE TO PERSONS RECEIVING THIS DRAWING AND / OR TECHNICAL INFORMATION	
TOLERANCES		THIS DOCUMENT, INCLUDING THE DRAWING AND INFORMATION CONTAINED THEREIN, IS CONFIDENTIAL AND IS THE SOLE PROPERTY OF EATON CORPORATION. IT IS TO BE KEPT SECRET BY ALL PERSONS TO WHOM IT IS LOANED OR REPRODUCED IN ANY MANNER. THE RECEIVING PARTY AGREES TO RETURN THIS DOCUMENT TO EATON CORPORATION AND TO MAINTAIN ITS CONFIDENTIALITY. THIS NOTICE SHALL GOVERN THE STATUS OF THIS DOCUMENT. COPYRIGHT 2008 EATON CORPORATION - ALL RIGHTS RESERVED.	
.X = ---	DRAWN BY/DATE	SDR 3-27-92	MATERIAL/HEAT TREAT
.XX = REF	CHECKED BY/DATE	KJR 8-4-92	
.XXX = ONLY	ENGRG BY/DATE	RA 8-4-92	TITLE
α = ---°	UNSPECIFIED RADII ARE:		4000 MOTOR INSTALLATION
	METALURGY BY/DATE		
	UNSPECIFIED DRAFT ANGLES ARE:		NUMBER
	THIRD ANGLE PROJECTION		A-599
C SIZE	DO NOT SCALE	SCALE 1/1	SHEET 1 OF 1