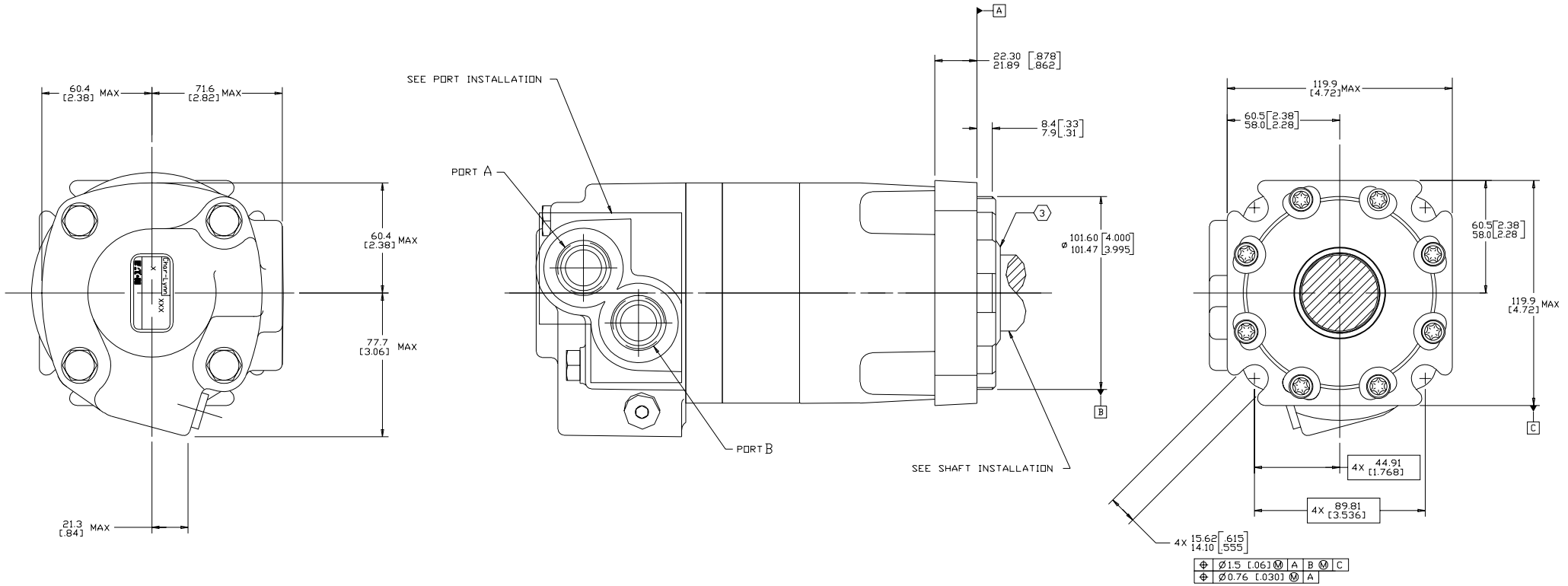


REV	REVISION	BY	DATE	ECN
A	ENGINEERING RELEASE	SDR	8-8-92	21551
E	REVISED FOR ASSY STACK UP	SKS	07-21-09	M76462
F	-1X(7A) ADDED NOTE (3)-2) DRAWING UPDATED TO ASME Y14.5M-1994 STANDARD	ABH	10-03-13	M90645
G	(2B)15.6(15)14.1(.555) WAS 15.2(60)14.5(.57)	SMT	09-02-17	0082994



NOTE

1 ROTATION:
 STANDARD; WHEN FACING SHAFT END OF MOTOR, SHAFT TO ROTATE;
 CLOCKWISE WHEN PORT "A" IS PRESSURIZED
 COUNTERCLOCKWISE WHEN PORT "B" IS PRESSURIZED

REVERSE; WHEN FACING SHAFT END OF MOTOR, SHAFT TO ROTATE;
 CLOCKWISE WHEN PORT "B" IS PRESSURIZED
 COUNTERCLOCKWISE WHEN PORT "A" IS PRESSURIZED

2 MOUNTING TYPE: AB
 STANDARD, 4 BOLT: 101.60 [4.000] PILOT DIA.
 14.7 [.58] SLOTS ON 127.00 [5.000] DIA.
 BOLT CIRCLE, "SAE B"

(3) SEAL GUARD APPLICABLE IF INDICATED ON PART LIST

EATON REVIEWED FOR CLASSIFICATION PER ESP -042

DRAWING BASED ON ASME Y14.5M-1994

EATON CORPORATION - CONFIDENTIAL AND PROPRIETARY
 NOTICE TO PURCHASER: RECEIVING THIS DRAWING
 IMPLIES AGREEMENT TO PROTECT ALL RIGHTS, INCLUDING PATENT RIGHTS, IN THE INFORMATION CONTAINED HEREIN. EATON CORPORATION, 2300 LINDEN ROAD, WARREN, MI 48090-1699

EATON
 Eaton Hydraulics, Inc.
 1400 Lindell Road
 Eden Prairie, MN 55344

UNLESS OTHERWISE SPECIFIED ALL DIMENSIONS ARE IN: <input type="checkbox"/> INCHES <input checked="" type="checkbox"/> MILLIMETERS <input type="checkbox"/> DECIMALS <input type="checkbox"/> FRACTIONS	TOLERANCES X .----- XX + REF XXX + ONLY Z .-----	UNSPECIFIED RADI ARE METALLURGY .----- BY DATE	TITLE 4000 MOTOR INSTALLATION
UNSPECIFIED DRAFT ANGLES ARE THIRD ANGLE PROJECTION DO NOT SCALE	BY DATE SDR 3-14-92 KJR 8-4-92	UNSPECIFIED MICROFINISHES DO NOT SCALE	NUMBER A-598
B SIZE	SCALE 1/1	SCALE 1/1	SHEET 1 OF 1