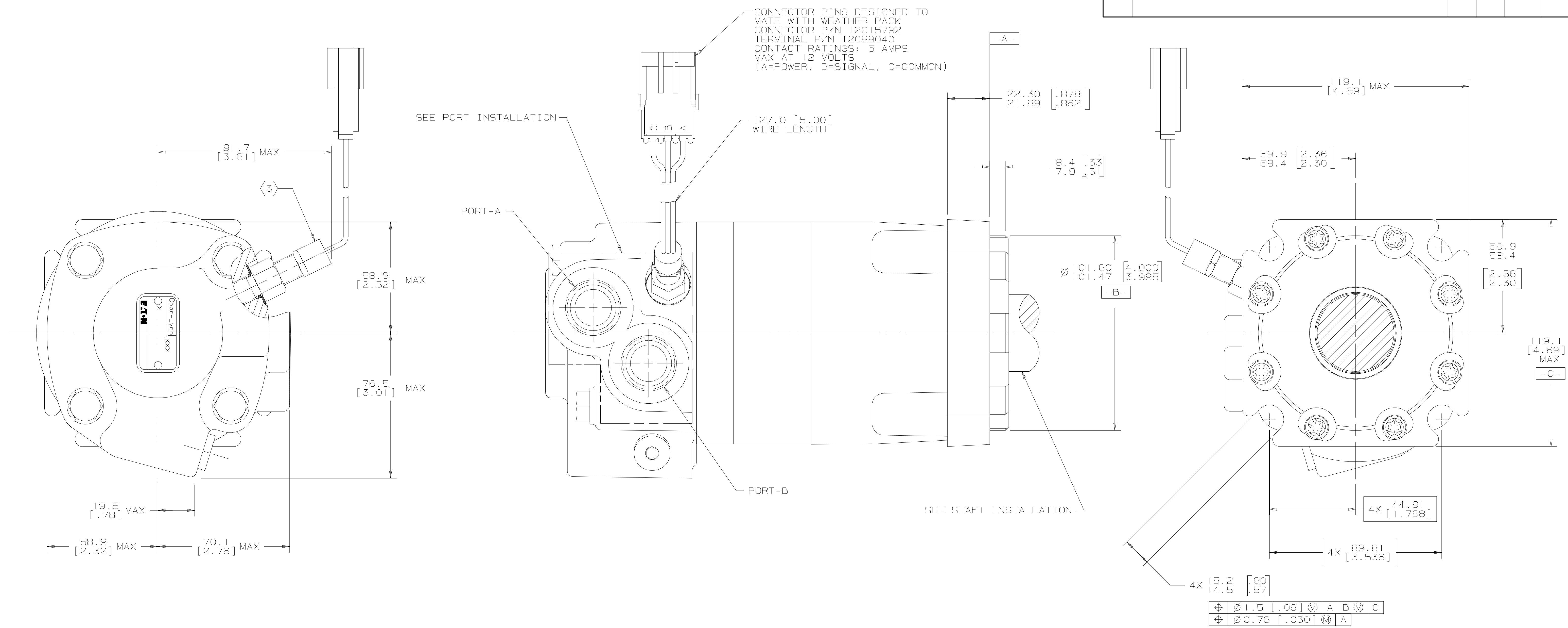


REV	DESCRIPTION	BY	CHK	DATE	ECN
A	ENGINEERING RELEASE	RAF		6-11-96	M15454
G	(5C)(7C)REVISED PICTORIALY	RAF		2-5-97	29191
H	(6A)MOUNTING TYPE WAS "B"	AMM		1-24-07	0002527



NOTE

1 ROTATION:  
 STANDARD: WHEN FACING SHAFT END OF MOTOR SHAFT TO ROTATE CLOCKWISE WHEN PORT "A" IS PRESSURIZED COUNTERCLOCKWISE WHEN PORT "B" IS PRESSURIZED  
 REVERSE: WHEN FACING SHAFT END OF MOTOR SHAFT TO ROTATE COUNTERCLOCKWISE WHEN PORT "B" IS PRESSURIZED COUNTERCLOCKWISE WHEN PORT "A" IS PRESSURIZED

2 MOUNTING TYPE: AB  
 STANDARD 4 BOLT: Ø 101.60 [4.000] PILOT, 14.7 [.58] SLOTS ON Ø 127.00 [5.000] BOLT CIRCLE "SAE B"

3 NOMINAL SENSOR OUTPUT WILL BE 30 ELECTRICAL PULSES PER SHAFT REVOLUTION  
 SUPPLY VOLTAGE: 8 TO 28 Vdc  
 OUTPUT VOLTAGE: LOW .5 Vdc AT 10 mA; HIGH Vs-1 Vdc

UNLESS OTHERWISE SPECIFIED ALL DIMENSIONS ARE IN		DRAWING BASED ON ANSI Y14.5M-1982	
INCHES <input type="checkbox"/>	MILLIMETERS (INCHES) <input checked="" type="checkbox"/>	NOTICE TO PERSONS RECEIVING THIS DRAWING AND / OR TECHNICAL INFORMATION	
TOLERANCES		Eaton Corporation claims proprietary rights in the information disclosed herein. This document is issued in confidence and is not to be reproduced or used to manufacture anything shown hereon without the written permission of the Eaton Corporation.	
.XX ±----	CHECKED BY/DATE GCB 7-8-96	MATERIAL/HEAT TREAT	
.XXX +REF	ENGRD. BY/DATE MLB 7-9-96	TITLE	
.XXX +ONLY	UNSPECIFIED RADI ARE	4000 MOTOR INSTALLATION	
UNSPECIFIED RADI ARE	METALLURGY BY/DATE	NUMBER	
UNSPECIFIED DRAFT ANGLES ARE	THIRD ANGLE PROJECTION	A-1111-001	
DRAWING FORMAT CAD <input checked="" type="checkbox"/> MANUAL <input type="checkbox"/>	DO NOT SCALE	ARITHMETICAL AVERAGE	SCALE 1/1 SHEET 1 OF 1