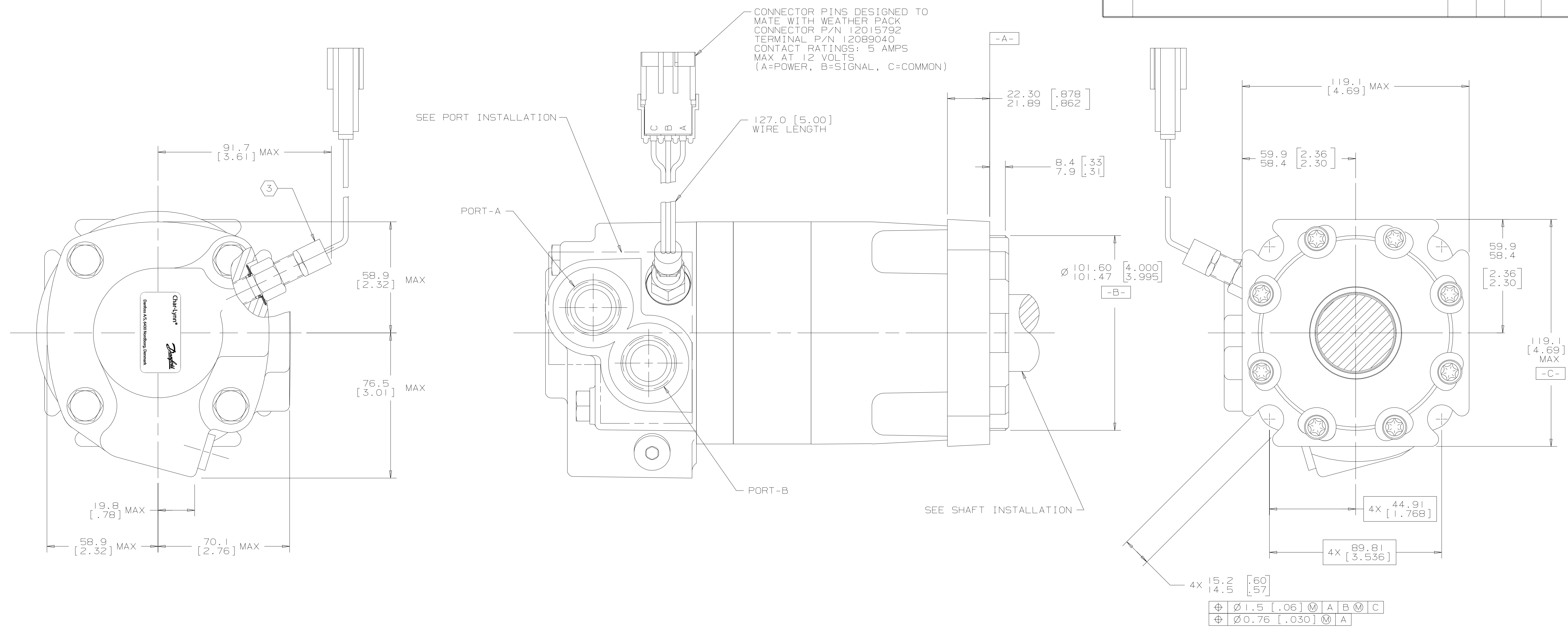


REV	DESCRIPTION	BY	CHK	DATE	ECN
A	ENGINEERING RELEASE	RAF		6-11-96	M15454
G	(5C)(7C)REVISED PICTORIALY	RAF		2-5-97	29191
H	(6A)MOUNTING TYPE WAS "B"	AMM		1-24-07	0002527



NOTE

1 ROTATION:
 STANDARD: WHEN FACING SHAFT END OF MOTOR SHAFT TO ROTATE COUNTERCLOCKWISE WHEN PORT "B" IS PRESSURIZED
 REVERSE: WHEN FACING SHAFT END OF MOTOR SHAFT TO ROTATE COUNTERCLOCKWISE WHEN PORT "A" IS PRESSURIZED

2 MOUNTING TYPE: AB
 STANDARD 4 BOLT: Ø 101.60 [4.000] PILOT, 14.7 [.58] SLOTS ON Ø 127.00 [5.000] BOLT CIRCLE "SAE B"

3 NOMINAL SENSOR OUTPUT WILL BE 30 ELECTRICAL PULSES PER SHAFT REVOLUTION
 SUPPLY VOLTAGE: 8 TO 28 Vdc
 OUTPUT VOLTAGE: LOW .5 Vdc AT 10 mA; HIGH Vs-1 Vdc

UNLESS OTHERWISE SPECIFIED ALL DIMENSIONS ARE IN		DRAWING BASED ON ANSI Y14.5M-1982	
INCHES <input type="checkbox"/>	MILLIMETERS <input checked="" type="checkbox"/>	THE REPRODUCTION, DISTRIBUTION, AND UTILIZATION OF THIS DOCUMENT, AS WELL AS THE COMMUNICATION OF ITS CONTENTS TO OTHERS WITHOUT EXPLICIT AUTHORIZATION IS PROHIBITED. OFFENDERS WILL BE HELD LIABLE FOR THE PAYMENT OF DAMAGES. ALL RIGHTS RESERVED IN THE EVENT OF THE GRANT OF A PATENT, UTILITY MODEL, OR DESIGN (PER ISO 16016)	
TOLERANCES			
.XX +REF			
.XXX +ONLY		DRAWN BY/DATE: RAF 6-24-96 CHECKED BY/DATE: GCB 7-8-96 UNDESIGNED BY/DATE: RAD11 ARE	MATERIAL/HEAT TREAT TITLE: 4000 MOTOR INSTALLATION
UNSPECIFIED DRAFT ANGLES ARE		ENGR. BY/DATE: MLB 7-9-96 METALLURGY BY/DATE:	NUMBER: A-1111-001 SCALE: 1/1 SHEET: 1 OF 1
DRAWING FORMAT CAD <input checked="" type="checkbox"/> MANUAL <input type="checkbox"/>		THIRD ANGLE PROJECTION DO NOT SCALE ARITHMETICAL AVERAGE	