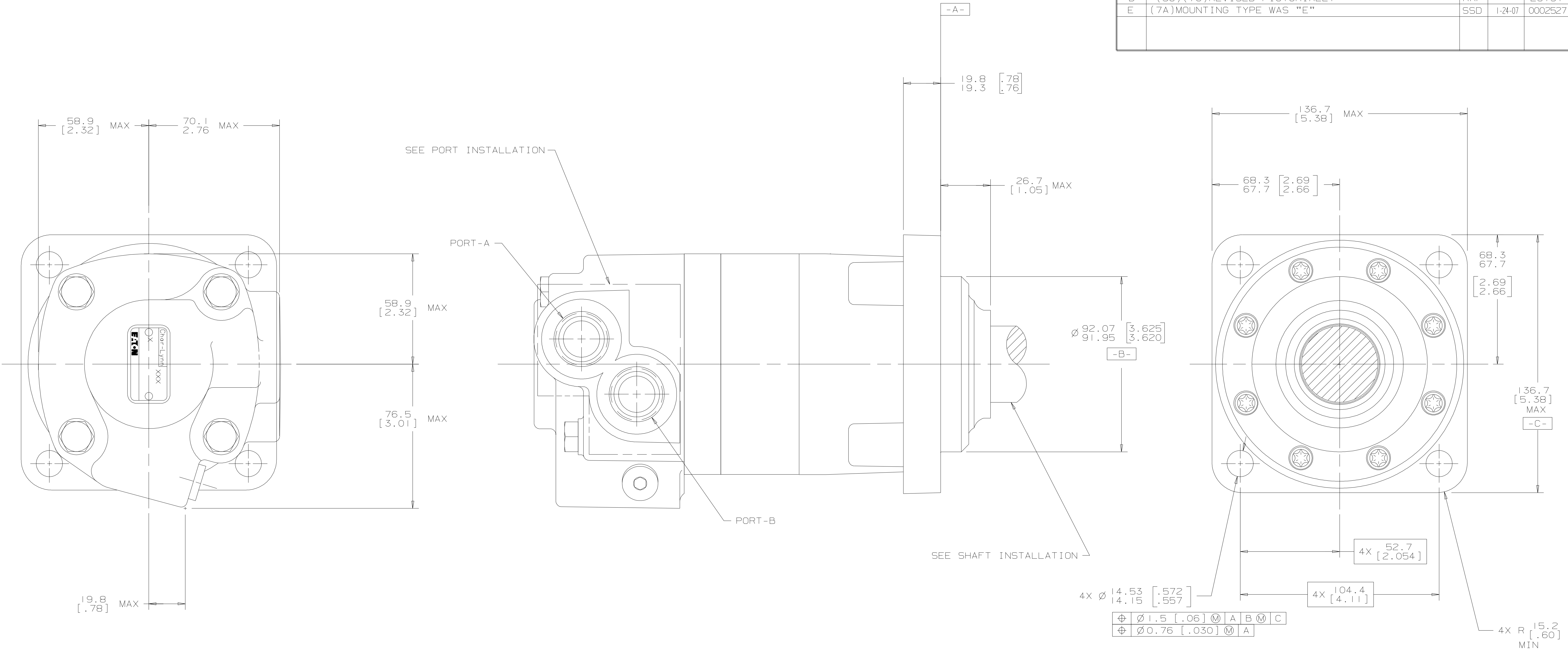


SYM	REVISION	BY	DATE	ECN
A	ENGINEERING RELEASE	SDR	2-8-92	21551
B	(7B) REMOVED 18°/16°	AGJ	11-22-95	27499
C	(2B) 4X 104.4 [4.11] WAS 4X 147.6 [5.81]	SDR	5-14-96	M15285A
D	(5C) (7C) REVISED PICTORIALY	RAF	2-5-97	29191
E	(7A) MOUNTING TYPE WAS "E"	SSO	1-24-07	0002527



NOTE

1. ROTATION:
 STANDARD; WHEN FACING SHAFT END OF MOTOR, SHAFT TO ROTATE:
 CLOCKWISE WHEN PORT "A" IS PRESSURIZED
 COUNTERCLOCKWISE WHEN PORT "B" IS PRESSURIZED

REVERSE; WHEN FACING SHAFT END OF MOTOR, SHAFT TO ROTATE:
 CLOCKWISE WHEN PORT "B" IS PRESSURIZED.
 COUNTERCLOCKWISE WHEN PORT "A" IS PRESSURIZED

2. MOUNTING TYPE: AE
 STANDARD, 4 BOLT: 92.08 [3.625] PILOT DIA.
 14.27 [.562] DIA. HOLES ON 147.57 [5.810]
 DIA. BOLT CIRCLE (SHORT)

UNLESS OTHERWISE SPECIFIED ALL DIMENSIONS ARE IN INCHES <input type="checkbox"/> MILLIMETERS (INCHES) <input checked="" type="checkbox"/>		DRAWING BASED ON ANSI Y14.5M-1982	
TOLERANCES .X ± --- .XX ± REF .XXX ± ONLY < ---		NOTICE TO PERSONS RECEIVING THIS DRAWING AND / OR TECHNICAL INFORMATION Eaton Corporation claims proprietary rights in the information disclosed herein. This document is issued in confidence and is not to be reproduced or used to manufacture anything shown hereon without the written permission of the Eaton Corporation.	
DRAWN BY/DATE SDR 3-14-92 CHECKED BY/DATE KJR 8-4-92		MATERIAL/HEAT TREAT	
UNSPECIFIED RADI: ARE ENGR: BY/DATE RVA 8-4-92 METALLURGY BY/DATE		TITLE 4000 MOTOR INSTALLATION	
UNSPECIFIED DRAFT ANGLES ARE THIRD ANGLE PROJECTION		MICROINCHES (MICROINCHES) <input type="checkbox"/> NUMBER A-601	
DRAWING FORMAT CAD <input checked="" type="checkbox"/> MANUAL <input type="checkbox"/>		DO NOT SCALE ARITHMETICAL AVERAGE SCALE 1/1 SHEET 1 OF 1	