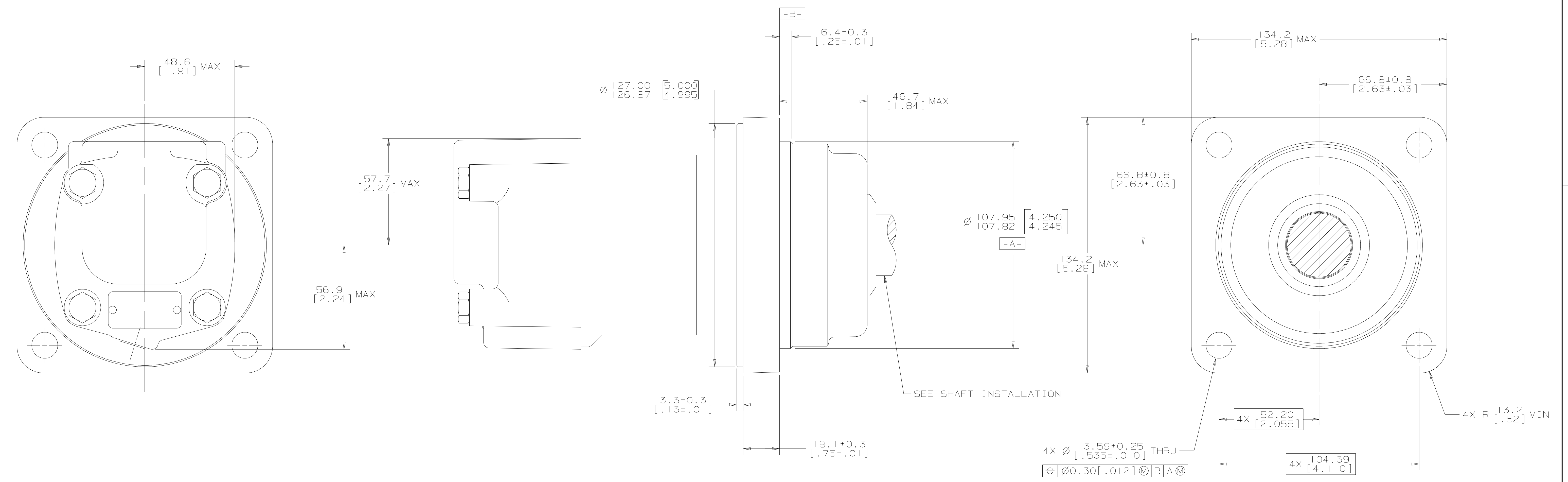
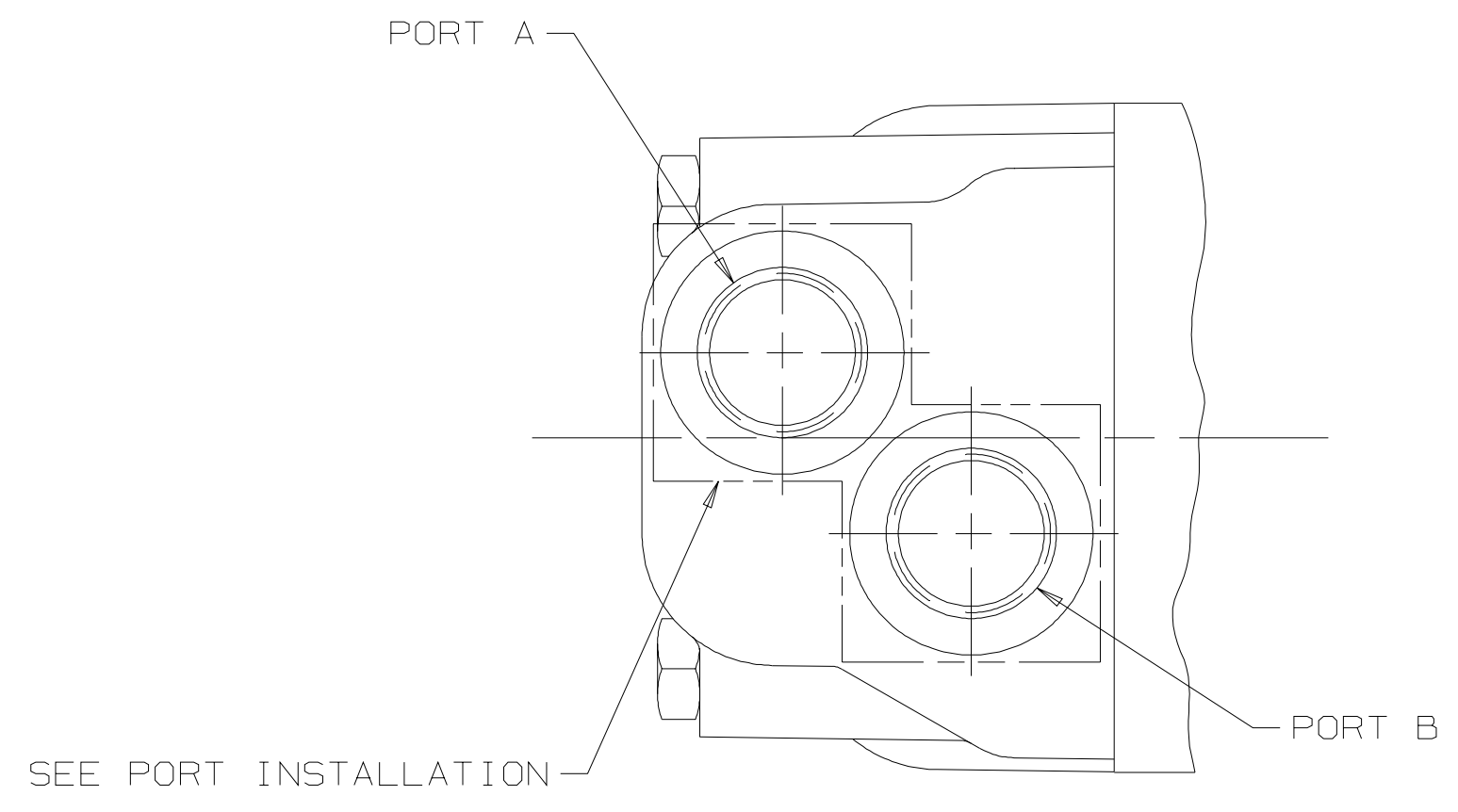


SYM	REVISION	BY	DATE	ECN
A	ENGINEERING RELEASE	AGJ	1-10-94	M8961
B	REVISED PICTORIALY	AGJ	9-21-94	25888
C	-1) (4B) ADDED Ø93.0/91.4 [3.66/3.60] -2) (4C) ADDED 21.6 [.85] MAX -3) REVISED PICTORIALY	JMS	7-29-99	33164
D	(4C) 46.5 [1.83] MAX WAS 46.7 [1.84] MAX	MLL	10-24-00	36603
E	(4C) 46.7 [1.84] MAX WAS 46.5 [1.83] MAX	AGJ	9-6-01	39067
F	(4A) NOTE 2 WAS MOUNTING TYPE: B	AGJ	5/13/02	41044
G	-1) (4C) REMOVED 93.0/91.4 [3.66/3.60] -2) (4C) REMOVED 21.6 [.85] MAX	AAK	3-2-04	46977



NOTE

1 ROTATION:
 STANDARD: WHEN FACING SHAFT END OF MOTOR, SHAFT TO ROTATE;
 CLOCKWISE WHEN PORT "A" IS PRESSURIZED
 COUNTERCLOCKWISE WHEN PORT "B" IS PRESSURIZED

REVERSE: WHEN FACING SHAFT END OF MOTOR, SHAFT TO ROTATE;
 CLOCKWISE WHEN PORT "B" IS PRESSURIZED
 COUNTERCLOCKWISE WHEN PORT "A" IS PRESSURIZED

2 MOUNTING TYPE: AB
 WHEEL, 4 BOLT: Ø 108.0 [4.25] PILOT
 Ø 13.59 [.535] HOLES ON Ø 147.6 [5.81] BOLT CIRCLE
 Ø 127.0 [5.00] REAR MOUNT PILOT

G K S

UNLESS OTHERWISE SPECIFIED ALL DIMENSIONS ARE IN		DRAWING BASED ON ANSI Y14.5M-1982	
INCHES <input type="checkbox"/>	MILLIMETERS <input checked="" type="checkbox"/>	NOTICE TO PERSONS RECEIVING THIS DRAWING AND / OR TECHNICAL INFORMATION	
TOLERANCES		Eaton Corporation claims proprietary rights in the information disclosed herein. This document is issued in confidence and is not to be reproduced or used to manufacture anything shown hereon without the written permission of the Eaton Corporation.	
.XX ±----	DRWN: A. JOHNSON	MATERIAL/HEAT TREAT	
.XXX ±ONLY	BY/DATE: 1-26-94	CHECKED BY/DATE: SJR 1-31-94	
UNSPECIFIED RADI ARE	ENGR: MLB 2-1-94	TITLE: 2000 SERIES MOTOR INSTALL	
UNSPECIFIED DRAFT ANGLES ARE	METALLURGY BY/DATE: -----	NUMBER: A-664-008	
DRAWING FORMAT CADD <input checked="" type="checkbox"/> MANUAL <input type="checkbox"/>	THIRD ANGLE PROJECTION	MICROINCHES (MICROINCHES)	SCALE: 1/1
	DO NOT SCALE	ARITHMETICAL AVERAGE	SHEET 1 OF 1