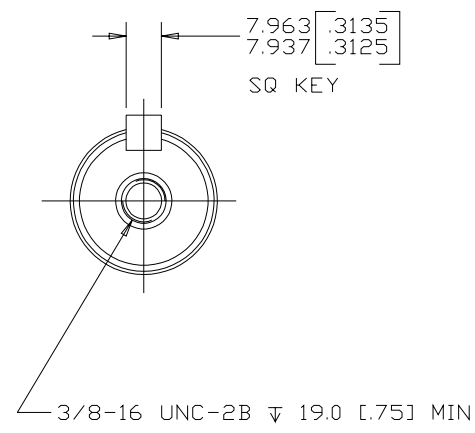
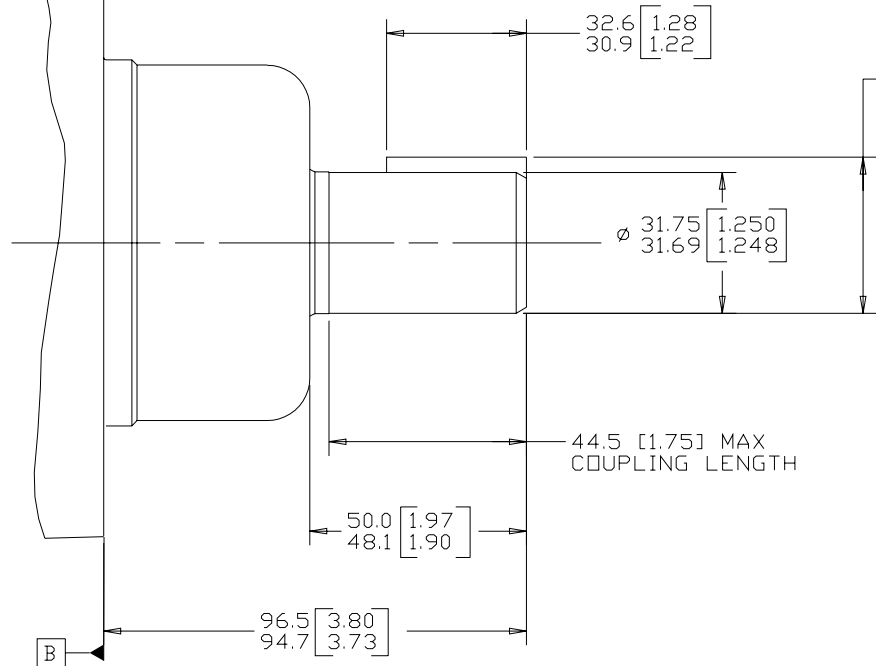


REV	DESCRIPTION	BY	DATE	ECN
A	ENGINEERING RELEASE	VVB	7-20-06	M67853
B	-1)96.5/94.7 [3.80/3.73] WAS 96.5/94.0 [3.80/3.70] -2)50.0/48.1 [1.97/1.90] WAS 50.0/47.6 [1.97/1.87] -3)COUPLING LENGTH WAS 47.3[1.86] MAX -4)DRAWING UPDATED TO ASME Y14.5M-1994 STANDARD	ABH	7-24-13	M89956



REVIEWED FOR CLASSIFICATION PER ESP -042

- NOTE
- 1 MOUNTING TYPE: OPTION AR
  - 2 OUTPUT SHAFT: OPTION 02 & 17

UNLESS OTHERWISE SPECIFIED ALL DIMENSIONS ARE IN INCHES <input type="checkbox"/> MILLIMETERS <input checked="" type="checkbox"/>	DRAWING BASED ON ASME Y14.5M-1994	
	THE REPRODUCTION, DISTRIBUTION, AND UTILIZATION OF THIS DOCUMENT, AS WELL AS THE COMMUNICATION OF ITS CONTENTS TO OTHERS WITHOUT EXPLICIT AUTHORIZATION IS PROHIBITED. OFFENDERS WILL BE HELD LIABLE FOR THE PAYMENT OF DAMAGES. ALL RIGHTS RESERVED IN THE EVENT OF THE GRANT OF A PATENT, UTILITY MODEL, OR DESIGN. (PER ISO 16016)	
TOLERANCES	DRAWN BY/DATE: VVB 7-26-06	MATERIAL/HEAT TREAT
.x ± ----	CHECKED BY/DATE: AAK 7-26-06	
.xx ± REF	ENGRG BY/DATE: JML 7-27-06	TITLE
.xxx ± ONLY	METALLURGY BY/DATE: ----	2000 SERIES MOTOR SHAFT INSTALLATION
< ± ----		NUMBER
UNSPECIFIED RADII ARE ----		A-842-002
UNSPECIFIED DRAFT ANGLES ARE ----	THIRD ANGLE PROJECTION	SCALE 1/1
B SIZE	DO NOT SCALE	SHEET 1 OF 1

