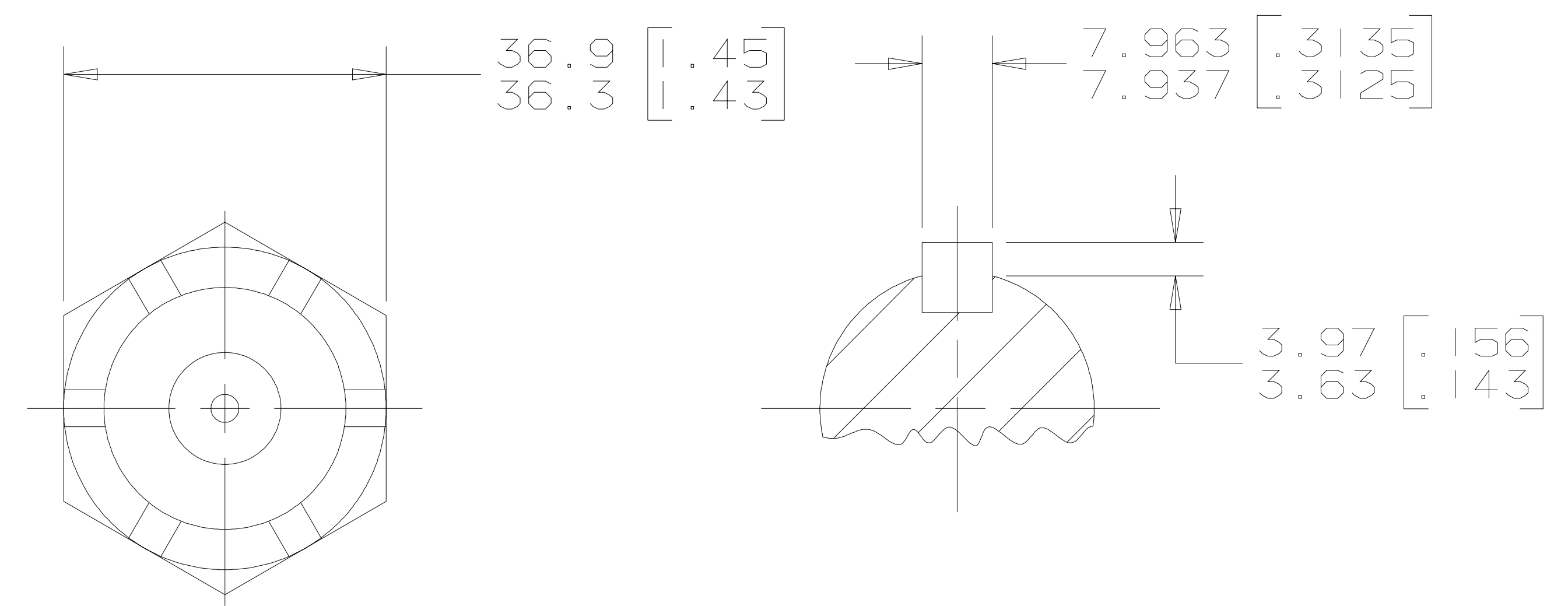
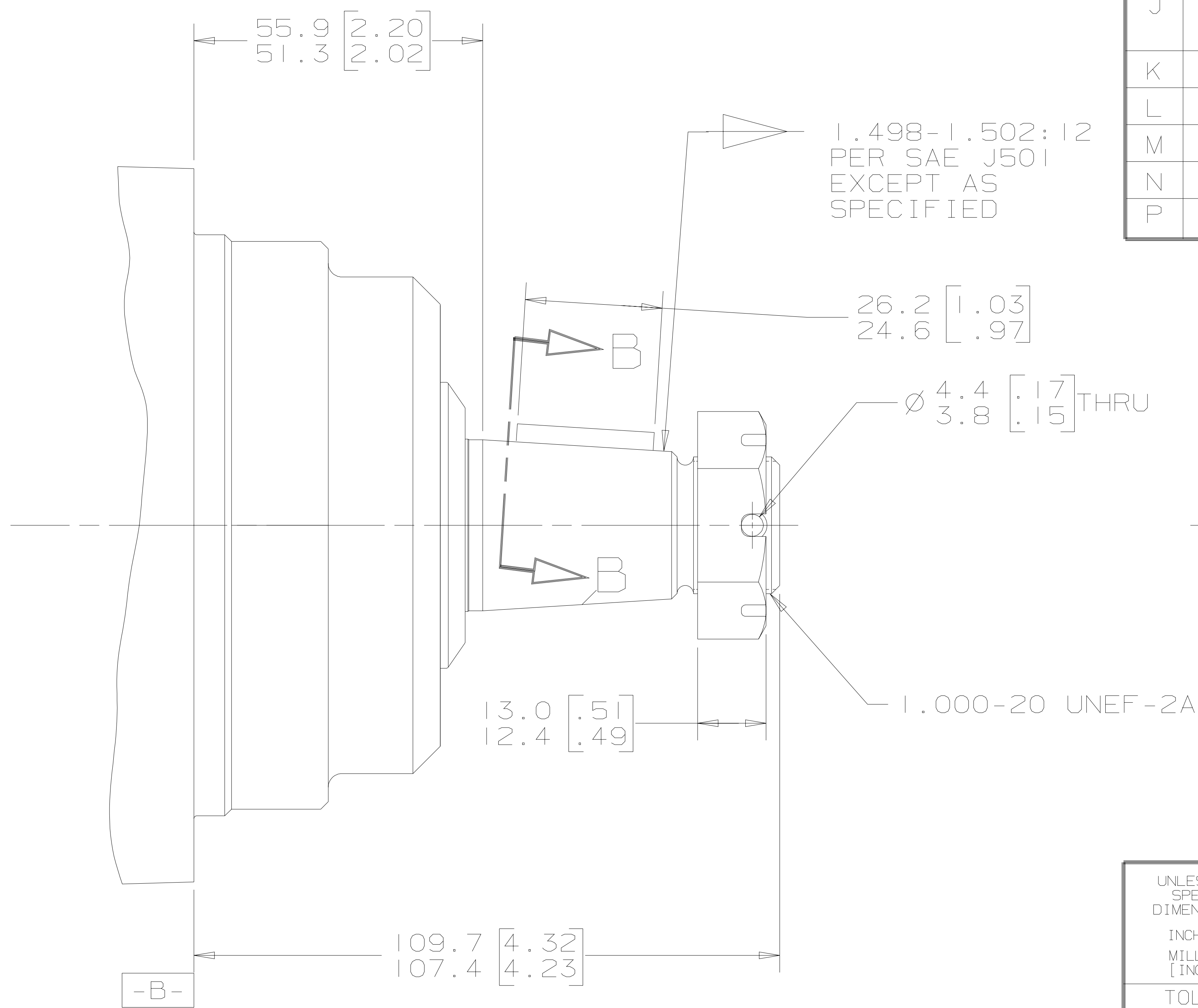


REV	DESCRIPTION	BY	CHK	DATE	ECN
A	ENGINEERING RELEASE	AGJ		9-21-94	25888
H	ADDED 55.9/51.3 [2.20/2.02]	AGJ		8-30-01	39045
J	109.7/107.4 [4.32/4.23] WAS 111.0/106.4 [4.37/4.19]	AGJ		5-17-04	47918
K	REVISED PICTORIALY	AAK		3-2-04	46977
L	NOTE 2 WAS "OUTPUT SHAFT."	SKS		3-20-06	M66923
M	NOTE 2 WAS OUTPUT SHAFT:OPTION 03,25 & 44	PM		4-4-06	54522
N	REMOVED OUTPUT SHAFT OPTION "44"	AAK		2-1-07	55805
P	REVISED PICTORIALY	VBH		7-9-07	0008921



G K S

NOTE

- 1 MOUNTING TYPE: OPTION AB & BF
- 2 OUTPUT SHAFT: OPTION 03,18 & 44

UNLESS OTHERWISE SPECIFIED ALL DIMENSIONS ARE IN INCHES <input type="checkbox"/> MILLIMETERS [INCHES] <input checked="" type="checkbox"/>	DRAWING BASED ON ANSI Y14.5M-1982	
	THE REPRODUCTION, DISTRIBUTION, AND UTILIZATION OF THIS DOCUMENT, AS WELL AS THE COMMUNICATION OF ITS CONTENTS TO OTHERS WITHOUT EXPLICIT AUTHORIZATION IS PROHIBITED. OFFENDERS WILL BE HELD LIABLE FOR THE PAYMENT OF DAMAGES. ALL RIGHTS RESERVED IN THE EVENT OF THE GRANT OF A PATENT, UTILITY MODEL, OR DESIGN. (PER ISO 16016)	
TOLERANCES .X ±----- .XX ±REF .XXX ±ONLY < ±-----	DRAWN BY/DATE AGJ 9-26-94 CHECKED BY/DATE SDR 10-17-94 ENGRG BY/DATE MB 10-25-94 METALLURGY BY/DATE -----	MATERIAL/HEAT TREAT TITLE 2000 SERIES MOTOR SHAFT INSTALLATION
UNSPECIFIED RADII ARE ----- UNSPECIFIED DRAFT ANGLES ARE ----- DRAWING FORMAT CADD <input checked="" type="checkbox"/> MANUAL <input type="checkbox"/>	THIRD ANGLE PROJECTION DO NOT SCALE	MICROINCHES <input checked="" type="checkbox"/> MICROMETERS [MICROINCHES] <input type="checkbox"/> 250/ ARITHMETICAL AVERAGE NUMBER A-682-032 SCALE 1/1 SHEET 1 OF 1

